



Age- and sex-specific effects of a long-term lifestyle intervention on body weight and cardiometabolic health markers in adults with prediabetes: results from the diabetes prevention study PREVIEW

Ruixin Zhu¹ · Ionut Craciun¹ · Jan Bernhards-Werge¹ · Elli Jalo² · Sally D. Poppitt³ · Marta P. Silvestre^{3,4} · Maija Huttunen-Lenz⁵ · Melitta A. McNarry⁶ · Gareth Stratton⁶ · Svetoslav Handjiev⁷ · Teodora Handjjeva-Darlenska⁷ · Santiago Navas-Carretero^{8,9,10} · Jouko Sundvall¹¹ · Tanja C. Adam¹² · Mathijs Drummen¹² · Elizabeth J. Simpson¹³ · Ian A. Macdonald¹³ · Jennie Brand-Miller¹⁴ · Roslyn Muirhead¹⁴ · Tony Lam¹⁵ · Pia S. Vestentoft¹ · Kristine Færch^{16,17} · J. Alfredo Martinez^{9,18,19} · Mikael Fogelholm² · Anne Raben^{1,16}

Received: 18 January 2022 / Accepted: 31 March 2022
© The Author(s) 2022

Abstract

Aims/hypothesis Lifestyle interventions are the first-line treatment option for body weight and cardiometabolic health management. However, whether age groups or women and men respond differently to lifestyle interventions is under debate. We aimed to examine age- and sex-specific effects of a low-energy diet (LED) followed by a long-term lifestyle intervention on body weight, body composition and cardiometabolic health markers in adults with prediabetes (i.e. impaired fasting glucose and/or impaired glucose tolerance).

Methods This observational study used longitudinal data from 2223 overweight participants with prediabetes in the multicentre diabetes prevention study PREVIEW. The participants underwent a LED-induced rapid weight loss (WL) period followed by a 3 year lifestyle-based weight maintenance (WM) intervention. Changes in outcomes of interest in prespecified age (younger: 25–45 years; middle-aged: 46–54 years; older: 55–70 years) or sex (women and men) groups were compared.

Results In total, 783 younger, 319 middle-aged and 1121 older adults and 1503 women and 720 men were included in the analysis. In the available case and complete case analyses, multivariable-adjusted linear mixed models showed that younger and older adults had similar weight loss after the LED, whereas older adults had greater sustained weight loss after the WM intervention (adjusted difference for older vs younger adults -1.25% [95% CI $-1.92, -0.58$], $p < 0.001$). After the WM intervention, older adults lost more fat-free mass and bone mass and had smaller improvements in 2 h plasma glucose (adjusted difference for older vs younger adults 0.65 mmol/l [95% CI $0.50, 0.80$], $p < 0.001$) and systolic blood pressure (adjusted difference for older vs younger adults 2.57 mmHg [95% CI $1.37, 3.77$], $p < 0.001$) than younger adults. Older adults had smaller decreases in fasting and 2 h glucose, HbA_{1c} and systolic blood pressure after the WM intervention than middle-aged adults. In the complete case analysis, the above-mentioned differences between middle-aged and older adults disappeared, but the direction of the effect size did not change. After the WL period, compared with men, women had less weight loss (adjusted difference for women vs men 1.78% [95% CI $1.12, 2.43$], $p < 0.001$) with greater fat-free mass and bone mass loss and smaller improvements in HbA_{1c}, LDL-cholesterol and diastolic blood pressure. After the WM intervention, women had greater fat-free mass and bone mass loss and

Ionut Craciun and Jan Bernhards-Werge are joint second authors.

✉ Mikael Fogelholm
mikael.fogelholm@helsinki.fi

✉ Anne Raben
ara@nexs.ku.dk

Extended author information available on the last page of the article

Research in context

What is already known about this subject?

- Obesity and prediabetes are associated with an increased risk of cardiovascular disease
- Lifestyle interventions are the first-line treatment option for body weight and cardiometabolic health management

What is the key question?

- Are there age- or sex-specific effects of a low-energy diet followed by a long-term lifestyle intervention on body weight, body composition and cardiometabolic health markers?

What are the new findings?

- Older adults benefited less from the lifestyle intervention in relation to body composition (i.e. fat-free mass and bone mass) and cardiometabolic health markers than younger adults, despite greater sustained weight loss
- Women benefited less from the low-energy diet followed by the lifestyle intervention in relation to body weight and body composition than men

How might this impact on clinical practice in the foreseeable future?

- Future interventions targeting weight management and cardiovascular disease prevention in women or older adults may want to consider the prevention of fat-free mass and bone mass loss; however, given that this is a hypothesis-generating study, independent replication is needed before the implementation of age- and sex-specific interventions

smaller improvements in HbA_{1c} and LDL-cholesterol, while they had greater improvements in fasting glucose, triacylglycerol (adjusted difference for women vs men -0.08 mmol/l [-0.11 , -0.04], $p < 0.001$) and HDL-cholesterol.

Conclusions/interpretation Older adults benefited less from a lifestyle intervention in relation to body composition and cardiometabolic health markers than younger adults, despite greater sustained weight loss. Women benefited less from a LED followed by a lifestyle intervention in relation to body weight and body composition than men. Future interventions targeting older adults or women should take prevention of fat-free mass and bone mass loss into consideration.

Clinical trial registration number [ClinicalTrials.gov](https://clinicaltrials.gov/ct2/show/study/NCT01777893) NCT01777893.

Keywords Cardiovascular disease · Men · Middle-aged people · Obesity · Older people · Weight loss · Weight loss maintenance · Women · Young people

Abbreviations

BMC	Bone mineral content
BMD	Bone mineral density
CID	Clinical investigation day
DBP	Diastolic blood pressure
DPP	Diabetes Prevention Program
FFM	Fat-free mass
FPG	Fasting plasma glucose
HP/LGI	High-protein/low-glycaemic index diet
LED	Low-energy diet
Look AHEAD	Action for Health in Diabetes
MP/MGI	Moderate-protein/moderate-glycaemic index diet
PA	Physical activity
PREVIEW	PREvention of diabetes through lifestyle interventions and population studies In Europe and around the World

SBP	Systolic blood pressure
WL	Weight loss (period)
WM	Weight maintenance (intervention)

Introduction

The global prevalence of obesity, which is associated with an increased risk of CVD [1, 2], is increasing. Clinical guidelines from the American Heart Association and ADA recommend weight loss of 5–8% for overweight and obese individuals to prevent CVD [3–6]. As the first-line treatment option for obesity, lifestyle interventions have been shown to aid weight loss and improve cardiometabolic health markers in several large-scale

studies [7–10]. However, it is unclear whether the clinical guidelines benefit specific populations or whether personalised lifestyle interventions are needed.

Older adults (≥ 65 years) have attracted much attention, as they are highly likely to suffer from muscle and bone loss, sarcopenia and frailty during weight loss interventions, despite improvements in cardiometabolic health [11]. A systematic review suggested that lifestyle interventions were similarly effective at promoting weight loss and cardiometabolic health in older (≥ 60 years) and younger (< 60 years) adults, but this conclusion was mainly based on short- or medium-term (≤ 2 years) studies and/or studies with a focus on older adults only [12]. A secondary analysis of the Action for Health in Diabetes (Look AHEAD) trial showed that, compared with middle-aged adults (45–64 years), older adults (65–76 years) lost more body weight and had comparable improvements in cardiometabolic health markers during a 4 year lifestyle intervention [13]. Few studies have compared changes in body composition and cardiometabolic health markers during a long-term (> 2 years) lifestyle intervention in younger (25–45 years), middle-aged (46–54 years) and older (55–70 years) adults.

With regard to sex differences, a systematic review of RCTs of weight loss interventions reported that men demonstrated greater weight loss than women [14], whereas the concurrent change in cardiometabolic health markers is unknown. We have previously reported that women and men responded differently to an 8 week low-energy diet (LED) to induce rapid weight loss with regard to body weight and cardiometabolic health markers [15], but whether these effects will be long-lasting is unclear. A recent 2 year study found that there were no sex differences in intraorgan fat change and CVD risk after diet-induced weight loss [16], but the findings were limited by the small sample size.

The PREvention of diabetes through lifestyle interventions and population studies In Europe and around the World (PREVIEW) study was a 3 year, large-scale RCT of a lifestyle intervention for the prevention of diabetes in a large overweight population with prediabetes [17]. Type 2 diabetes and prediabetes have been demonstrated to be associated with an increased risk of CVD [18, 19] and the increased risk has been found to be mainly driven by abnormal levels of cardiometabolic health markers (e.g. blood pressure) [20]. Therefore, in the present observational study, we aimed to examine age- and sex-specific effects of a LED followed by a lifestyle-based weight maintenance (WM) intervention on body weight and cardiometabolic health markers in the PREVIEW participants. In addition, we compared the cumulative incidence of type 2 diabetes among age and sex groups.

Methods

Study design and participants The PREVIEW study ([ClinicalTrials.gov](https://clinicaltrials.gov/ct2/show/study/NCT01777893): NCT01777893) was a long-term, large-scale RCT conducted at eight intervention centres in Denmark, Finland, the Netherlands, the UK, Spain, Bulgaria, Australia and New Zealand. The detailed study design and main findings have been published [15, 17, 21]. Briefly, the primary outcome of the study was the impact of a high-protein/low-glycaemic index (HP/LGI) diet and a moderate-protein/moderate-glycaemic index (MP/MGI) diet on the risk of type 2 diabetes. The PREVIEW protocol was approved by the human ethics committee at each intervention centre (see electronic supplementary material [ESM] Table 1). The PREVIEW study was conducted in accordance with the Declaration of Helsinki.

Overweight or obese ($\text{BMI} \geq 25 \text{ kg/m}^2$) adult participants aged 25–70 years with prediabetes were enrolled from June 2013 to April 2015. At the screening visit, an OGTT with 75 g glucose was conducted and those with impaired fasting plasma glucose (FPG) and/or impaired glucose tolerance were considered to have prediabetes, according to ADA criteria [22]. FPG and 2 h plasma glucose were measured using a glucose analyser. All eligible participants provided written informed consent.

Interventions The PREVIEW study consisted of two phases. Phase 1 was an 8 week rapid weight loss (WL) phase with a LED (3400 kJ/day) [15] and phase 2 was a 148 week WM phase. Those who failed to achieve the target weight reduction ($> 8\%$ of initial body weight) were excluded. During the WM phase, participants were randomised into one of the four diet and physical activity (PA) combined intervention groups. Randomisation was stratified by age group (younger: 25–45 years; middle-aged: 46–54 years; older: 55–70 years) and sex (women and men). In defining the age range of each age group both the age classification from the World Health Organization [23] and the age range of menopause in women (44–54 years; menopause is associated with an increased risk of CVD [24]) were taken into consideration.

During the WM phase, participants were advised to consume an HP/LGI diet (25 E% [% energy] protein, 45 E% carbohydrates, $\text{GI} < 50$) or an MP/MGI diet (15 E% protein, 55 E% carbohydrates, $\text{GI} 56\text{--}70$) combined with either high- or moderate-intensity PA. The high-intensity PA programme consisted of high-intensity PA (e.g. aerobics with very vigorous effort) for 75 min/week and the moderate-intensity PA programme consisted of moderate-intensity PA (e.g. conditioning exercises) for 150 min/week. Diets were consumed ad libitum without energy restriction. Counselling visits were conducted to improve

diet and PA compliance, with decreasing frequency as the trial progressed [25]. Outcomes were collected at seven clinical investigation days (CIDs 1–7 at 0, 8, 26, 52, 78, 104 and 156 weeks, respectively); a detailed overview of the data collected at the different time points is provided in ESM Table 2. We allowed the following visit windows for data collection: at 8 weeks: –3 to +5 days; at 26 weeks: ± 1 week; at 52 weeks: ± 2 weeks; remaining time points: ± 4 weeks. Adherence to the diets was evaluated using 4 day food records and adherence to the PA programmes was evaluated using 7 day accelerometry data.

This observational study is a post hoc, secondary analysis focusing on the secondary outcomes, including body weight and composition and cardiometabolic health markers. We merged all participants into one intervention group and reclassified them by sex and age range used in the original randomisation, because (1) there was no significant interaction of intervention arm and age or sex and (2) diet and PA compliance were lower than expected [17].

Outcome measures The measurements of body weight, waist circumference, fat mass, fat-free mass (FFM), bone mineral content (BMC), bone mineral density (BMD), FPG, 2 h plasma glucose, HbA_{1c}, fasting triacylglycerol, HDL-cholesterol, LDL-cholesterol, systolic blood pressure (SBP) and diastolic blood pressure (DBP) were carried out as described previously [15, 17]. Briefly, all blood samples were drawn from the antecubital vein of participants in a fasting state (except for 2 h plasma glucose), stored at -80°C and transported to the Finnish Institute for Health and Welfare for analysis.

Type 2 diabetes ascertainment Type 2 diabetes was defined according to World Health Organization and ADA criteria [22, 26] and was diagnosed either (1) by an OGTT (FPG ≥ 7.0 mmol/l and/or 2 h plasma glucose ≥ 11.1 mmol/l) conducted at the intervention centres or (2) by a medical doctor. Most participants dropped out or completed the study by week 156, but some had a longer (>156 weeks) survival time because of the visit windows. We assumed that their last status was observed at 156 weeks.

Statistical analysis Linear mixed models were used to examine the associations of age and sex with changes in outcomes of interest during the 3 year lifestyle intervention from baseline to 156 weeks in all participants (available case analysis). Covariates that might influence the outcomes of interest [27–30] were added into the models (ESM Methods). Model 1 included age, sex, ethnicity, baseline BMI, baseline smoking status, baseline alcohol consumption, baseline energy intake and baseline PA, changes in energy intake and PA from baseline, baseline values of outcomes, intervention arm, time (categorical) and a two-way interaction of time and age group or sex as fixed covariates and participant identifier and

intervention centre as random effects. Model 2 additionally included percentage weight loss from baseline as a fixed covariate when cardiometabolic health markers were added as a dependent variable. If the interaction term was significant, post hoc multiple comparisons with Bonferroni correction or pairwise comparisons (independent samples *t* tests) were conducted at each time point. Sensitivity analyses were conducted in those who completed the study or by additionally adjusting for carbohydrate, protein, fat and fibre intakes. For body composition outcomes, the models were additionally adjusted for light PA, moderate-to-vigorous PA, sedentary time and wear time.

The associations of percentage weight loss or weight regain with changes in cardiometabolic health markers during the rapid WL phase or the WM phase by age and sex were examined using linear mixed models including age, sex, ethnicity, baseline BMI, baseline smoking status, baseline alcohol consumption, baseline energy intake and PA, baseline values of outcomes, percentage weight loss from baseline and a two-way interaction of percentage weight loss and age group or sex as fixed covariates and intervention centre as a random effect. For weight regain, the models additionally included percentage regain weight and intervention arm as fixed covariates.

Cumulative incidence of type 2 diabetes by age and sex was calculated using the Kaplan–Meier method, without adjustment. Diabetes incidence was compared among age and sex groups using a time-dependent Cox hazards regression model adjusted for $\log_e(\text{time}) \times \text{sex}$ or age, ethnicity, baseline smoking status, baseline alcohol consumption, baseline BMI, baseline FPG, baseline 2 h plasma glucose, baseline PA and baseline energy intake, changes in PA and energy intake from baseline, intervention arm and intervention site as covariates. The proportional hazards assumption was evaluated using a Wald test of the interaction of time and age or sex.

Missing data, including dietary intake, PA and changes in outcomes of interest, were imputed using the expectation maximisation algorithm. The normality of residuals was determined using histograms and P–P plots. Data were analysed using IBM SPSS v28.0 software (Chicago, IL, USA) and OriginPro 2020 software (OriginLab, Northampton, MA, USA). The statistical test was two-sided and $p < 0.05$ was considered statistically significant.

Results

Participants A total of 2223 participants were included in the study (Fig. 1). Of these, 783 (35.2%) were younger, 319 (14.3%) were middle-aged and 1121 (50.4%) were older adults; 1503 (67.6%) were women and 720 (32.4%) were men. Participants' baseline characteristics are shown in

Table 1 and ESM Table 3. Dietary intake and PA by age and sex are shown in ESM Table 4.

Changes in body weight and cardiometabolic health markers by age In the available case analysis, there were no differences in weight loss among age groups at 8 weeks, whereas middle-

aged and older adults had greater sustained weight loss than younger adults during the WM phase at 78, 104 and 156 weeks (adjusted mean difference for older vs younger adults at 156 weeks -1.58 kg [95% CI -2.27 , -0.89], $p < 0.001$; -1.25% [95% CI -1.92 , -0.58], $p < 0.001$; Fig. 2 and ESM Fig. 1, respectively). Older and younger adults lost similar

Fig. 1 Study flow diagram. A total of 2224 participants started the weight loss phase, but one withdrew consent and requested data deletion. Younger adults: 25–45 years; middle-aged adults: 46–54 years; older adults: 55–70 years. To enable the data collection to be as complete as possible, we allowed the following visit windows for data collection: at 8 weeks: -3 to 5 days; at 26 weeks: ± 1 week; at 52 weeks: ± 2 weeks; remaining time points: ± 4 weeks

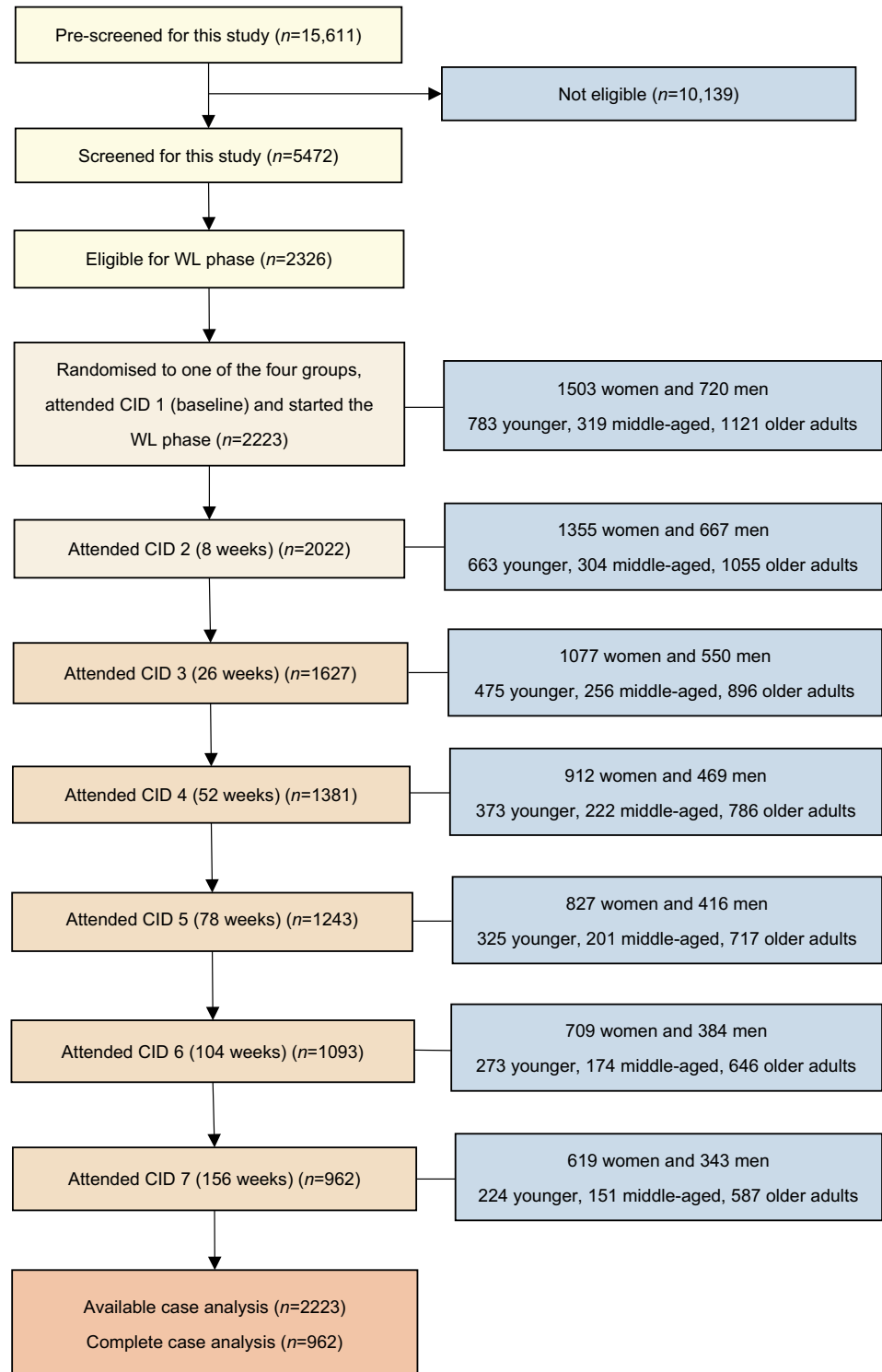


Table 1 Baseline characteristics by age and sex

Variable	All participants (<i>n</i> =2223)	Age group			Sex	
		Younger (<i>n</i> =783)	Middle-aged (<i>n</i> =319)	Older (<i>n</i> =1121)	Women (<i>n</i> =1503)	Men (<i>n</i> =720)
Sociodemographics						
Women	1503 (67.6)	564 (72.0)	220 (69.0)	719 (64.1)	–	–
Age range, years	25–70	25–45	46–54	55–70	25–70	25–70
Age, years	55 (43, 61)	39 (34, 43)	50 (48, 52)	61 (57, 65)	53 (42, 60)	56 (44, 63)
Ethnicity						
White	1947 (87.6)	600 (76.6)	274 (85.9)	1073 (95.7)	1299 (86.4)	648 (90.0)
Other ^a	276 (12.4)	183 (23.4)	45 (14.1)	48 (4.3)	204 (13.6)	72 (10.0)
Smoking status						
No	1875 (84.3)	605 (77.3)	281 (88.1)	989 (88.2)	1264 (84.1)	611 (84.9)
Yes, but less than weekly	72 (3.2)	39 (5.0)	7 (2.2)	26 (2.3)	50 (3.3)	22 (3.1)
Yes, at least daily	239 (10.8)	124 (15.8)	27 (8.5)	88 (7.9)	169 (11.2)	70 (9.7)
Missing	37 (1.7)	15 (1.9)	4 (1.3)	18 (1.6)	20 (1.3)	17 (2.4)
Alcohol consumption						
No	718 (32.3)	319 (40.7)	106 (33.2)	293 (26.1)	571 (38.0)	147 (20.4)
Yes	1470 (66.1)	448 (57.2)	208 (65.2)	814 (72.6)	911 (60.6)	559 (77.6)
Missing	35 (1.6)	16 (2.0)	5 (1.6)	14 (1.2)	21 (1.4)	14 (1.9)
Anthropometry and body composition						
Body weight, kg	96.7 (84.7, 111.1)	103.0 (90.1, 118.8)	98.1 (84.7, 110.3)	92.7 (82.4, 105.6)	92.4 (81.6, 106.1)	104.8 (94.7, 118.9)
Height, m	1.67 (1.61, 1.75)	1.68 (1.63, 1.75)	1.66 (1.61, 1.74)	1.67 (1.61, 1.74)	1.64 (1.59, 1.68)	1.77 (1.73, 1.82)
Waist circumference, cm	110.4 (14.7)	111.2 (16.2)	109.8 (14.5)	110.1 (13.7)	107.5 (14.0)	116.7 (14.3)
BMI, kg/m ²	33.9 (30.7, 38.5)	35.9 (31.7, 41.1)	34.0 (30.9, 38.8)	32.9 (30.0, 36.8)	34.3 (30.9, 39.3)	33.5 (30.5, 37.3)
Fat mass, kg	40.9 (33.4, 50.4)	44.5 (36.2, 54.9)	40.8 (33.8, 49.0)	38.6 (32.1, 47.3)	42.4 (34.7, 51.6)	37.4 (30.9, 46.3)
FFM, kg	54.0 (47.7, 64.1)	56.8 (49.8, 66.6)	53.6 (47.5, 64.1)	52.0 (46.2, 62.3)	49.7 (45.7, 54.9)	67.4 (61.7, 74.0)
BMC, g ^b	2720 (2401, 3136)	2886 (2544, 3271)	2756 (2414, 3170)	2600 (2300, 3000)	2550 (2318, 2800)	3336 (3000, 3662)
BMD, g/cm ^{2c}	1.3 (1.2, 1.3)	1.3 (1.2, 1.4)	1.3 (1.2, 1.3)	1.2 (1.1, 1.3)	1.2 (1.1, 1.3)	1.3 (1.2, 1.4)
Glucose metabolism						
FPG, mmol/l	6.2 (0.7)	5.9 (0.7)	6.2 (0.7)	6.3 (0.7)	6.1 (0.7)	6.3 (0.7)
2 h plasma glucose, mmol/l	7.7 (2.2)	7.2 (2.0)	7.9 (2.3)	7.9 (2.3)	7.6 (2.2)	7.7 (2.3)
HbA _{1c} , mmol/mol	36.7 (4.0)	35.6 (4.1)	37.3 (4.1)	37.3 (3.7)	36.7 (3.9)	36.8 (4.1)
HbA _{1c} , %	5.5 (0.4)	5.4 (0.4)	5.6 (0.4)	5.6 (0.3)	5.5 (0.4)	5.5 (0.4)
Lipid metabolism						
Triacylglycerol, mmol/l	1.3 (1.0, 1.8)	1.3 (1.0, 1.8)	1.3 (0.9, 1.7)	1.4 (1.1, 1.9)	1.3 (1.0, 1.7)	1.4 (1.1, 2.0)
Total cholesterol, mmol/l	5.2 (1.0)	5.0 (0.9)	5.2 (0.9)	5.3 (1.0)	5.3 (1.0)	5.0 (1.0)
HDL-cholesterol, mmol/l	1.2 (1.1, 1.4)	1.2 (1.0, 1.3)	1.3 (1.1, 1.4)	1.3 (1.1, 1.5)	1.3 (1.1, 1.5)	1.1 (1.0, 1.3)
LDL-cholesterol, mmol/l	3.2 (2.6, 3.8)	3.1 (2.5, 3.6)	3.3 (2.7, 3.8)	3.3 (2.7, 3.9)	3.3 (2.7, 3.8)	3.1 (2.6, 3.7)
Blood pressure						
SBP, mmHg	129.1 (15.9)	124.1 (14.7)	126.1 (14.3)	133.3 (15.9)	127.1 (16.0)	133.2 (14.7)
DBP, mmHg	78.7 (71.0, 85.3)	77.0 (69.0, 83.7)	78.2 (69.9, 84.5)	80.0 (72.7, 86.3)	77.3 (69.3, 84.3)	80.7 (74.3, 87.1)

Data are mean (SD), median (25th, 75th percentiles) or *n* (%)

^a Includes Asian, black, Arabic, Hispanic and other participants. χ^2 test was performed based on full categories including white, Asian, black, Arabic, Hispanic and other participants

^b Data available for 614 of 783 younger participants, 227 of 319 middle-aged participants and 639 of 1121 older participants or 1037 of 1503 women and 443 of 720 men from Denmark, Spain, Bulgaria, Australia and New Zealand

^c Data available for 419 of 783 younger participants, 221 of 319 middle-aged participants and 476 of 1121 older participants or 759 of 1503 women and 357 of 720 men from Denmark, Spain, Australia and New Zealand

FFM (kg and %) and BMC at 8 weeks, but older adults had less FFM and BMC regain than younger adults during the WM phase at 104 and 156 weeks. In the complete case analysis, middle-aged adults had greater weight loss (kg) at 156 weeks

than younger adults, whereas there were no differences in weight loss (%) between the two age groups at 156 weeks (ESM Fig. 2). The significant differences in FFM and BMC remained after additionally adjusting for PA type.

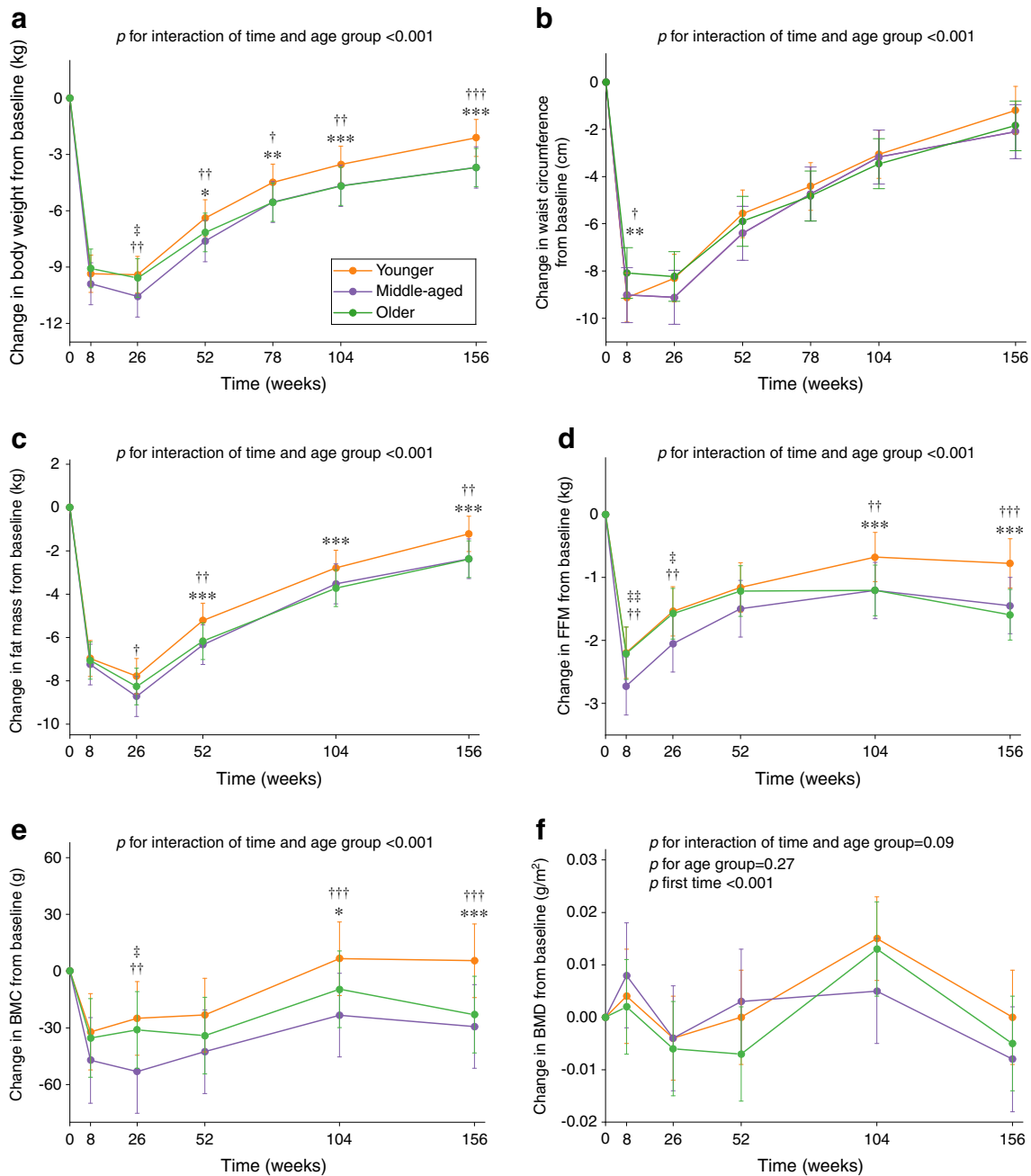
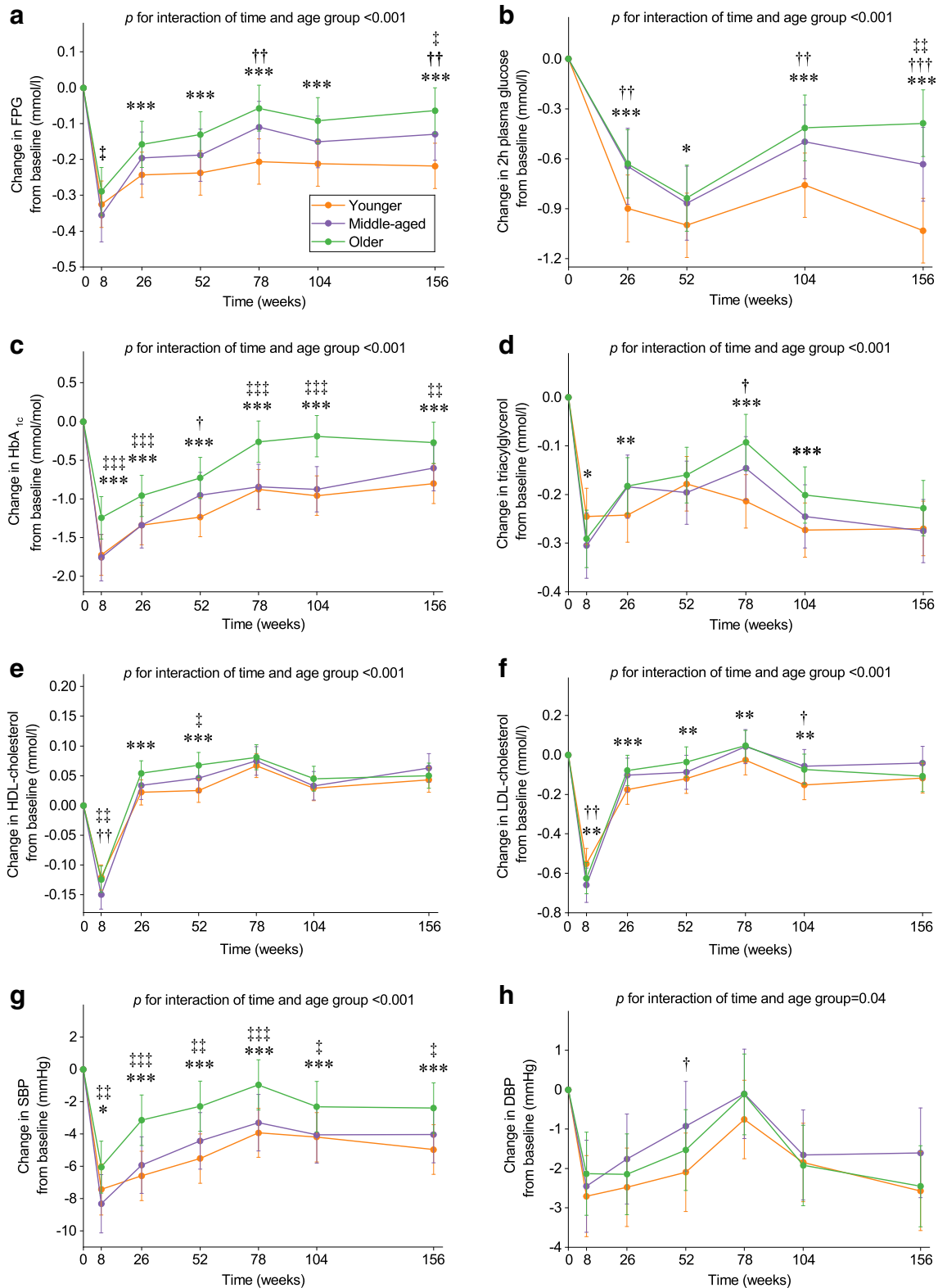


Fig. 2 Changes in anthropometry and body composition from baseline by age group ($n=2223$). Values are estimated marginal mean (95% CI) changes from baseline in body weight (**a**), waist circumference (**b**), fat mass (**c**), FFM (**d**), BMC (**e**) and BMD (**f**). Younger adults: 25–45 years; middle-aged adults: 46–54 years; older adults: 55–70 years. Analyses were performed using a linear mixed model including sex, age, ethnicity, baseline BMI, baseline smoking status, baseline alcohol consumption, baseline values of the outcome being considered, baseline energy intake and PA, time-varying changes in energy intake and PA from baseline, intervention arm, time and interaction of time and age group or sex as

fixed covariates and participant identifier and intervention centre as random effects. Post hoc multiple comparisons with Bonferroni adjustment were performed to compare age groups at each time point, where appropriate. Older vs younger adults * $p<0.05$, ** $p<0.01$ and *** $p<0.001$; middle-aged vs younger adults † $p<0.05$, †† $p<0.01$ and ††† $p<0.001$; older vs middle-aged adults ‡ $p<0.05$ and ‡‡ $p<0.01$. BMC data were based on 614 younger, 227 middle-aged and 639 older participants from Denmark, Spain, Bulgaria, Australia and New Zealand. BMD data were based on 419 younger, 221 middle-aged and 476 older participants from Denmark, Spain, Australia and New Zealand

In the available case analysis, compared with younger adults, older adults had smaller decreases in HbA_{1c} and SBP at 8 weeks and they maintained greater improvements in these outcomes and in 2 h plasma glucose during the whole WM

phase (ESM Fig. 3). Older adults had greater decreases in triacylglycerol than younger adults at 8 weeks, but the differences disappeared at 156 weeks. After adjustment for weight loss, the above-mentioned significant differences remained



(adjusted mean difference in 2 h plasma glucose for older vs younger adults at 156 weeks 0.65 mmol/l [95% CI 0.50, 0.80], $p < 0.001$; adjusted mean difference in SBP for older vs younger adults at 156 weeks 2.57 mmHg [95% CI 1.37, 3.77],

$p < 0.001$; Fig. 3). In addition, smaller decreases in FPG and 2 h plasma glucose in middle-aged vs younger adults and smaller decreases in FPG, 2 h plasma glucose, HbA_{1c} and SBP in older vs middle-aged adults were observed at

Fig. 3 Weight loss-adjusted changes in cardiometabolic health markers from baseline by age group ($n=2223$). Values are estimated marginal mean (95% CI) changes from baseline in FPG (a), 2 h plasma glucose (b), HbA_{1c} (c), triacylglycerol (d), HDL-cholesterol (e), LDL-cholesterol (f), SBP (g) and DBP (h). Younger adults: 25–45 years; middle-aged adults: 46–54 years; older adults: 55–70 years. Analyses were performed using a linear mixed model including sex, age, ethnicity, baseline BMI, baseline smoking status, baseline alcohol consumption, baseline values of the outcome being considered, time-varying percentage weight loss from baseline, baseline energy intake and PA, time-varying changes in energy intake and PA from baseline, intervention arm, time and interaction of time and age group as covariates and participant identifier and intervention centre as random effects. Post hoc multiple comparisons with Bonferroni adjustment were performed to compare age groups at each time point. Older vs younger adults * $p<0.05$, ** $p<0.01$ and *** $p<0.001$; middle-aged vs younger adults † $p<0.05$, †† $p<0.01$ and ††† $p<0.001$; older vs middle-aged adults ‡ $p<0.05$, ‡‡ $p<0.01$ and ‡‡‡ $p<0.001$

156 weeks. The above-mentioned results remained robust after adjusting for dietary intake. In the complete case analysis, there were no significant differences in the above-mentioned outcomes between middle-aged and older adults at 156 weeks, but the direction of effect was the same (ESM Fig. 4).

Changes in body weight and cardiometabolic health markers by sex In the available case analysis, compared with men, women lost less body weight (adjusted mean difference at 8 weeks 1.74 kg [95% CI 1.07, 2.41], $p<0.001$; 1.12% [95% CI 0.47, 1.78], $p<0.001$; Fig. 4 and ESM Fig. 5, respectively) but more FFM (kg and %) at 8 weeks and had less sustained weight loss (adjusted mean difference at 156 weeks 1.39 kg [95% CI 0.71, 2.06], $p<0.001$; 1.78% [95% CI 1.12, 2.43], $p<0.001$) and less change in FFM during the WM phase. In addition, women lost more BMC and BMD than men over 3 years. The above-mentioned results remained robust in the complete case analysis. The significant differences in FFM and BMC remained after additionally adjusting for PA type.

In the available case analysis, compared with men, women had smaller decreases in FPG, HbA_{1c}, triacylglycerol, LDL-cholesterol and DBP and greater decreases in HDL-cholesterol at 8 weeks (ESM Fig. 6). After the WM phase, women had greater improvements in FPG and HDL-cholesterol than men, while they had smaller improvements in HbA_{1c} and LDL-cholesterol. After adjustment for percentage weight loss, the significant differences in HbA_{1c}, LDL-cholesterol, HDL-cholesterol and DBP between women and men remained at 8 weeks (Fig. 5). In this analysis, after the WM phase, women had greater improvements in FPG, triacylglycerol, HDL-cholesterol, SBP and DBP than men (adjusted mean difference at 156 weeks in FPG -0.15 mmol/l [95% CI -0.18 , -0.11], $p<0.001$; SBP -1.41 mmHg [95% CI -2.34 , -0.48], $p=0.003$; triacylglycerol -0.08 mmol/l [95% CI -0.11 , -0.04], $p<0.001$; Fig. 5), while they had smaller improvements in HbA_{1c} and LDL-cholesterol. The above-

mentioned results remained robust after adjusting for dietary intake. In the complete case analysis, there were no significant differences in SBP and DBP between women and men at 156 weeks, but the direction of effect was the same (ESM Fig. 7).

Associations of weight change with cardiometabolic health markers Rapid weight loss was associated with greater improvements in SBP in older adults than younger adults (ESM Table 5). Weight loss was associated with smaller improvements in FPG, triacylglycerol, HDL-cholesterol, LDL-cholesterol, SBP and DBP in women than men. During the WM phase, weight regain was associated with more adverse FPG, HbA_{1c} and SBP in older vs younger adults.

Type 2 diabetes incidence The total number of cases of type 2 diabetes was 69 (seven during the rapid WL phase and 62 during the WM phase; 13 younger, 14 middle-aged and 42 older adults; 48 women and 21 men). The 3 year cumulative incidence was 4.6% in younger, 8.8% in middle-aged and 6.6% in older adults; and 6.8% in women and 5.6% in men (Fig. 6). The adjusted hazard ratio was 0.43 (95% CI 0.20, 0.89) for older vs middle-aged adults ($p=0.02$).

Discussion

We found that the cardiometabolic benefits of a LED followed by a lifestyle intervention differed by age and sex in overweight adults with prediabetes. Older adults benefited less from a lifestyle-based WM intervention in relation to body composition and cardiometabolic health markers than younger adults, despite greater sustained weight loss. Women benefited less from the lifestyle intervention in relation to body weight and composition and cardiometabolic health markers than men. After the lifestyle-based WM phase, women showed greater improvements in fasting glucose, triacylglycerol and HDL-cholesterol, and smaller improvements in HbA_{1c} and LDL-cholesterol. Older adults had a lower incidence of type 2 diabetes at the end of the study than middle-aged adults.

Several potential mechanisms may explain the observed age and sex differences in the present study. Ageing may lead to the redistribution of adipose tissue, from subcutaneous to visceral depots [31]. Distribution of adipose tissue is also affected by sex [32]. Epidemiological studies have confirmed the association of visceral adiposity with deteriorating metabolic outcomes, whereas subcutaneous adipose tissue has been found to be associated with protective properties [33]. In addition, epigenetic age acceleration was found to be positively correlated with glucose and the triacylglycerol–glucose index [34].

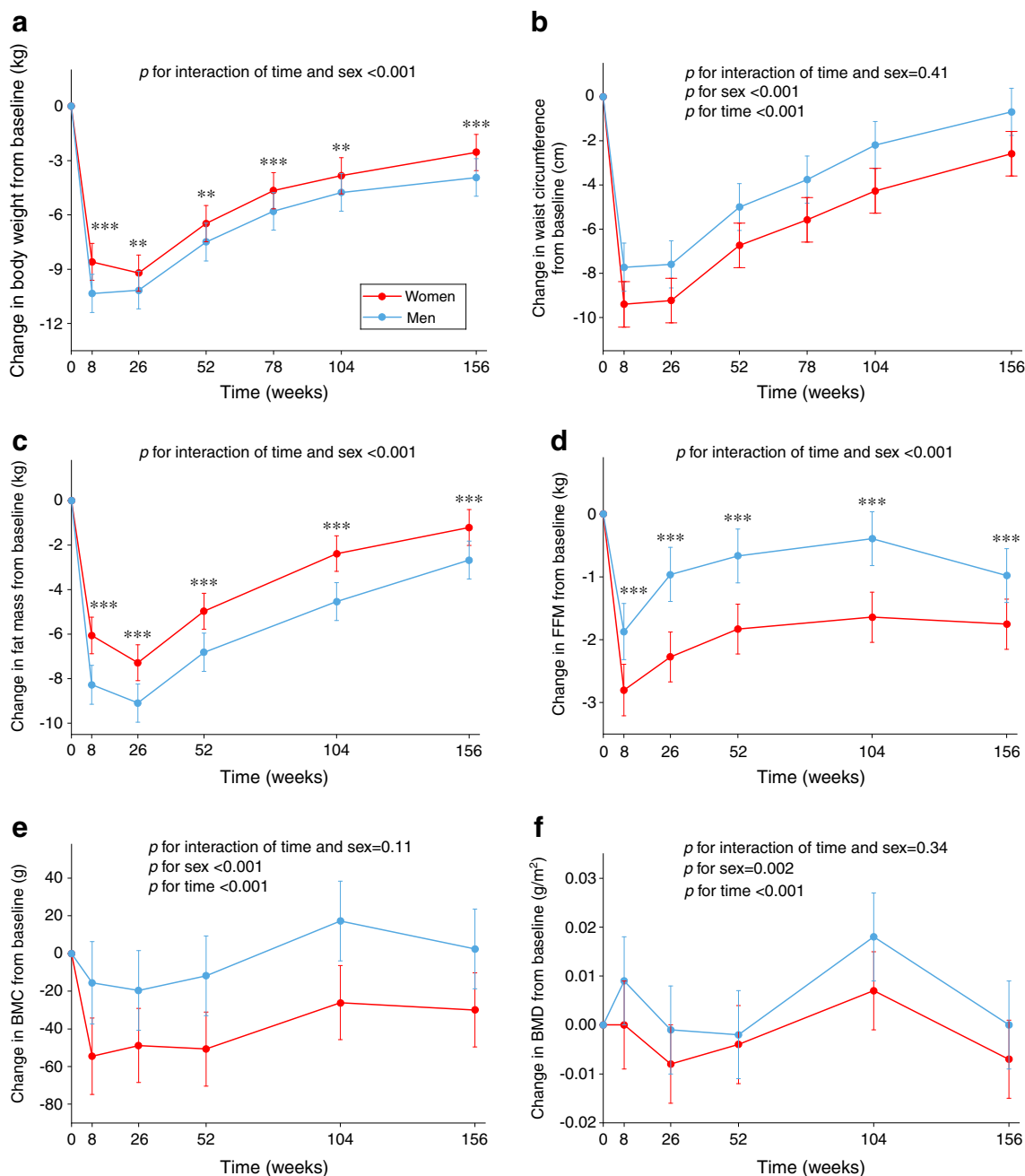


Fig. 4 Changes in anthropometry and body composition from baseline in women and men ($n=2223$). Values are estimated marginal mean (95% CI) changes from baseline in body weight (a), waist circumference (b), fat mass (c), FFM (d), BMC (e) and BMD (f). Analyses were performed using a linear mixed model including sex, age, ethnicity, baseline BMI, baseline smoking status, baseline alcohol consumption, baseline values of the outcome being considered, baseline energy intake and PA, time-varying changes in energy intake and PA from baseline, intervention arm,

time and interaction of time and age group or sex as fixed covariates and participant identifier and intervention centre as random effects. Post hoc pairwise comparisons (independent samples t tests) were performed to compare women and men at each time point, where appropriate. Women vs men $**p<0.01$ and $***p<0.001$. BMC data were based on 1037 women and 443 men from Denmark, Spain, Bulgaria, Australia and New Zealand. BMD data were based on 759 women and 357 men from Denmark, Spain, Australia and New Zealand

In the present study, older adults had greater sustained weight loss than younger adults, which is in agreement with the findings from the secondary analyses of the Weight Loss Maintenance trial and the Look AHEAD trial [13, 35]. However, among those participating in the adapted Diabetes Prevention Program (DPP) lifestyle intervention, there were

no differences in weight loss between older and younger adults [36]. The conflicting results may be attributed to differences in study duration and the age range of groups compared. In the adapted DPP, the intervention lasted only 10 months, whereas in our study we did not find significant differences in weight loss between younger and older adults until 52 weeks.

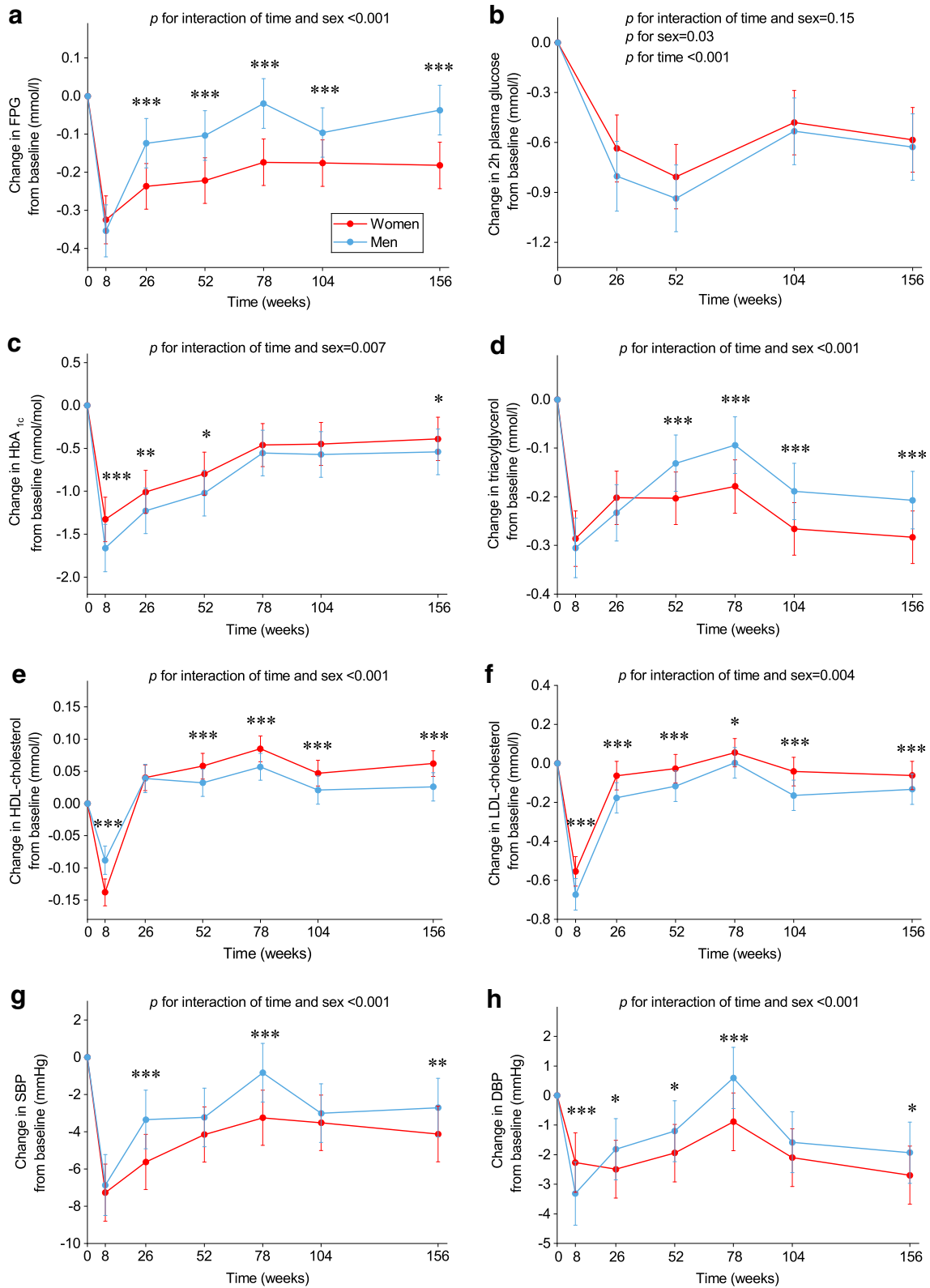


Fig. 5 Weight-adjusted changes in cardiometabolic health markers from baseline in women and men ($n=2223$). Values are estimated marginal mean (95% CI) changes from baseline in FPG (a), 2 h plasma glucose (b), HbA_{1c} (c), triacylglycerol (d), HDL-cholesterol (e), LDL-cholesterol (f), SBP (g) and DBP (h). Analyses were performed using a linear mixed model including sex, age, ethnicity, baseline BMI, baseline smoking status, baseline alcohol consumption, baseline values of the outcome

being considered, time-varying percentage weight loss from baseline, baseline energy intake and PA, time-varying changes in energy intake and PA from baseline, intervention arm, time and interaction of time and sex as fixed covariates and participant identifier and intervention centre as random effects. Post hoc pairwise comparisons (independent samples t tests) were performed to compare women and men at each time point, where appropriate. Women vs men * $p<0.05$, ** $p<0.01$ and *** $p<0.001$

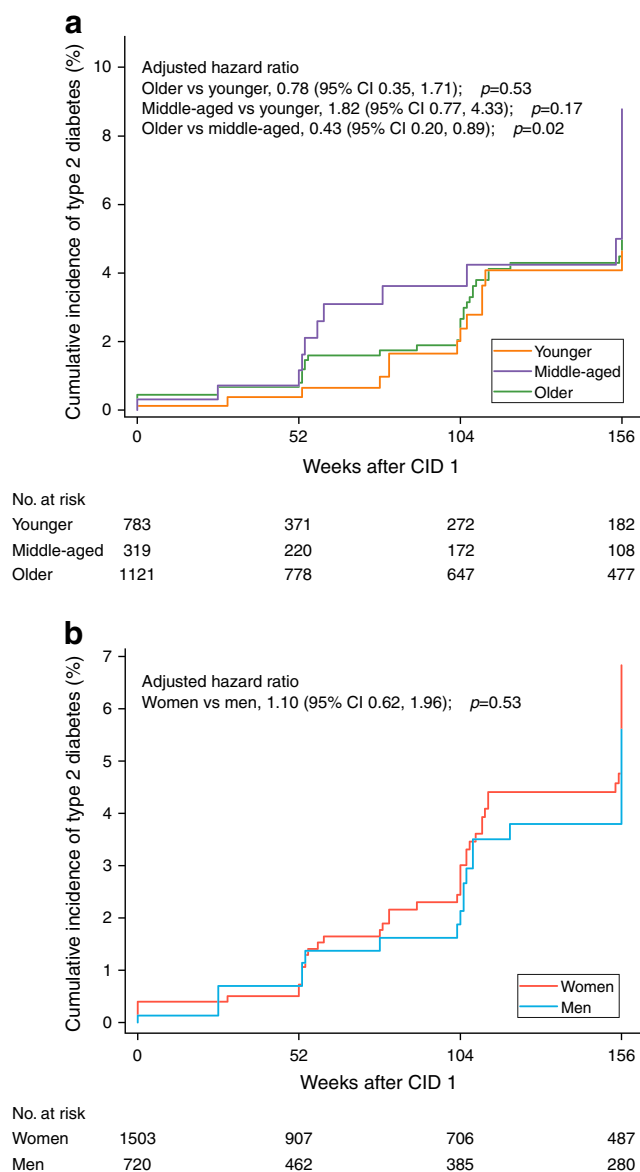


Fig. 6 Cumulative incidence of type 2 diabetes by age and sex ($n=2223$). Values are cumulative incidence of diabetes by age (**a**) and sex (**b**) at each time point. Diabetes was diagnosed by an OGTT with 75 g glucose or by a medical doctor. Cumulative incidence was calculated using the Kaplan–Meier method, without adjustment. The incidence of diabetes was compared among age groups or between women and men using a time-dependent Cox hazards regression model adjusted for $\log_e(\text{time}) \times \text{age}$ or sex, ethnicity, baseline smoking status, baseline alcohol consumption, baseline BMI, baseline FPG, baseline 2 h plasma glucose, baseline PA and baseline energy intake, changes in PA and energy intake from baseline, intervention arm and intervention site as covariates

In addition, in the adapted DPP, participants were divided into only two age groups (<65 vs ≥ 65 years), whereas in our study we compared three age groups.

Notably, the above-mentioned studies did not report body composition data and the present study therefore adds to the evidence base by exploring long-term changes in body composition among age groups. Less weight regain but also

less regain of FFM and BMC after rapid weight loss were observed in older adults than in younger adults, which suggests that future weight management programmes designed for older adults should take both weight loss and prevention of FFM and BMC loss into consideration. Regarding prevention of FFM and BMC loss, an RCT demonstrated that resistance exercise was associated with a lower weight loss-induced decrease in BMD in older adults [37]. Moreover, systematic reviews have suggested that resistance exercise is effective in the prevention of osteoporosis in older adults [38] and that exercise is also effective in the prevention of FFM loss in middle-aged and older adults after moderate energy restriction-induced weight loss [39]. In the PREVIEW study, participants were not advised to focus on resistance exercise during the WM phase, because the aim of the study was to compare the effect of intensity levels rather than types of exercise. For preservation of BMC and FFM, future weight management programmes might consider including other types of PA (e.g. resistance exercise).

Many previous studies have explored the effects of lifestyle interventions on cardiometabolic health markers in older adults [12, 36] and the associations of weight loss with cardiometabolic health markers [9, 40–42], whereas few have compared changes in cardiometabolic health markers across age groups. In the present study, older adults had smaller improvements in cardiometabolic health markers than younger adults during the WM phase, especially at the end of the study, although they had a worse metabolic profile at baseline (a larger potential for improvement) and greater sustained weight loss. The differences at the end of the study between younger and older adults still remained after adjustment for weight loss, which suggests that age per se may also influence cardiometabolic health markers. In addition, we found that older adults, who had more adverse metabolic profiles at baseline, had a lower incidence of type 2 diabetes at the end of the study than middle-aged adults. This might be partly explained by the effect of menopause on the risk of type 2 diabetes in middle-aged women [43]. Selection bias caused by a high attrition rate may be another explanation.

In terms of sex differences in changes in body weight and body composition, in a previous PREVIEW publication we reported that women lost less body weight but more FFM and BMC than men during the rapid weight loss phase [15]; in the present study these patterns were the same during the WM phase. Our findings on sex differences in weight loss are in line with a meta-analysis of six lifestyle-based weight loss RCTs [14] and a recent study on sex differences in intraorgan fat levels and hepatic lipid metabolism [16]. In addition, a systematic review suggested that men tend to lose more weight with intensive low-fat reducing diets and PA programmes than women [44]. However, a review argued that the observed sex differences in weight loss are attributable to greater initial body weight or a greater degree of energy

restriction in men, instead of inherent sex differences [32]. In the present study, the difference in weight loss still remained after adjustment for baseline body weight and change in energy intake from baseline. Considering body composition, in agreement with our findings, Evans et al [45] also found that men lost body fat (%) more effectively than women in a 1 year weight loss trial including dietary interventions and exercise guidance. In addition, Tirosh et al [46] found that women had a greater increase in the fat mass/FFM ratio and a greater reduction in BMD than men during a lifestyle-based weight loss intervention. Accordingly, it may be important for women to prevent FFM and BMC loss when participating in weight management programmes. Current data show that dietary protein may affect body composition [47], but in the present study the sex-specific differences in fat mass and BMC remained significant even after adjusting for protein intake. Moreover, our findings were also independent of PA type (i.e. light PA and moderate-to-vigorous PA). Previous studies have found that other types of PA (e.g. resistance exercise and aerobic exercise) may have different effects on body composition [47] and future studies should therefore investigate whether sex influences these effects.

A recent review suggested that sex may be an important factor in determining the effect of dietary or lifestyle interventions on cardiometabolic health [48]. In particular, Perreault et al [49] found that in the DPP lifestyle cohort, among those who lost >3% of their body weight, men appeared to have greater decreases in cardiometabolic health markers than women. However, this study did not include a diet-induced rapid WL phase and DPP investigators were therefore not able to observe sex differences in changes in cardiometabolic health markers during a rapid WL phase and a WM phase. In the present study, we showed that men benefited more in terms of body weight and composition and cardiometabolic health markers from the diet-induced WL phase. In addition, weight loss was associated with greater improvements in cardiometabolic health markers in men than women during the rapid WL phase. These findings suggest that the LED and rapid weight loss may be more effective in CVD prevention in men than in women.

The present study has some strengths. The large sample size and representative populations from eight countries could be considered a strength. Because of the wide age range included, we were able to compare differences in outcomes among younger, middle-aged and older adults. In addition, unlike short-term studies, our study was able to address longer term comorbidities associated with obesity and related diseases such as CVD. The present study also has limitations. First, the attrition rate was higher than expected, which resulted in a high percentage of missing data. To reduce the bias, we imputed the missing data and carried out a complete case analysis. Most of our findings in younger vs older adults and women vs men remained robust in the complete case analysis.

Moreover, the significant differences in younger vs older adults also remained in weight-adjusted models. Significant differences between middle-aged adults and other age groups, however, disappeared in the complete case analysis, but the direction of effect was the same. This may be because the differences were small and were not detectable in the small sample size (completers). Finally, the design and statistical analysis of the present secondary analysis were not prespecified and the baseline characteristics of subgroups were not precisely balanced. We adjusted for baseline BMI and outcomes, but it was not possible to completely remove some other participant-specific baseline characteristics, especially CVD and type 2 diabetes risk. These unmeasured and unadjusted confounders may have influenced the results. Taken together, given the existence of bias, our findings should be interpreted with caution and warrant further replication in an independent study.

In conclusion, this observational study found that, in a large population of overweight adults with prediabetes, the cardiometabolic benefits of a LED followed by a lifestyle intervention differed by age and sex. Older adults benefited less from the lifestyle intervention in relation to body composition and cardiometabolic health markers than younger adults. Women benefited less from the LED followed by the lifestyle intervention in relation to body weight and body composition than men. Our findings suggest that future weight management programmes designed for older adults or women may want to consider the prevention of FFM and bone mass loss. However, given that this is a hypothesis-generating study, independent replication is needed before the implementation of age- and sex-specific interventions.

Supplementary Information The online version contains peer-reviewed but unedited supplementary material available at <https://doi.org/10.1007/s00125-022-05716-3>.

Acknowledgements The PREVIEW consortium would like to thank all study participants at the intervention centres for their time and commitment and all scientists, advisors and students for their dedication and contributions to the study. Specifically, we would like to thank M. S. Westerterp-Plantenga (Maastricht University), T. Meinert Larsen (University of Copenhagen), E. Feskens (Wageningen University) and W. Schlicht (University of Stuttgart). Parts of this study will be presented in abstract and oral presentation form at the Zoom Forward 2022 joint ECO/IFSO-EC Congress on Obesity in Maastricht, the Netherlands, on 4–7 May 2022.

Data availability The datasets analysed during the current study are available from the corresponding author on reasonable request.

Funding Open Access funding provided by University of Helsinki including Helsinki University Central Hospital. This research was supported by the EU Seventh Framework Programme (FP7; 2007–2013) (grant no. 312057); National Health and Medical Research Council (EU Collaborative Grant AUS 8, ID 1067711); Glycemic

Index Foundation Australia through royalties to the University of Sydney; Health Research Council of New Zealand (grant no. 14/191) and University of Auckland Faculty Research Development Fund; Cambridge Weight Plan, which donated all products for the 8 week weight loss period; Danish Agriculture & Food Council; Danish Meat Research Institute; National Institute for Health Research Biomedical Research Centre (NIHR BRC) (UK); Biotechnology and Biological Sciences Research Council (BBSRC) (UK); Engineering and Physical Sciences Research Council (EPSRC) (UK); Nutritics (Dublin), which donated all dietary analysis software used by the University of Nottingham; Juho Vainio Foundation (Finland); Academy of Finland (grant nos 272376, 314383, 266286 and 314135); Finnish Medical Foundation; Gyllenberg Foundation (Finland); Novo Nordisk Foundation; Finnish Diabetes Research Foundation; University of Helsinki; Government Research Funds for Helsinki University Hospital; Jenny and Antti Wihuri Foundation (Finland); Emil Aaltonen Foundation (Finland); and China Scholarship Council. The funders were not involved in the design of the study, the collection, analysis and interpretation of the data or writing of the report and did not impose any restrictions regarding the publication of the report.

Authors' relationships and activities AR has received honorariums from the International Sweeteners Association and Unilever. IAM was a member of the UK government Scientific Advisory Committee on Nutrition, treasurer of the Federation of European Nutrition Societies, treasurer of the World Obesity Federation, member of the Mars Scientific Advisory Council, member of the Mars Europe Nutrition Advisory Board, and scientific adviser to the Waltham Centre for Pet Nutrition. He was also a member of the Nestlé Research Scientific Advisory Board and the Novozymes Scientific Advisory Board. He withdrew from all of these roles in 2020 and on 1 August 2020 became Professor Emeritus at the University of Nottingham and took up the post of scientific director of the Nestlé Institute of Health Sciences in Lausanne, Switzerland. JB-M is president and director of the Glycemic Index Foundation, oversees a glycaemic index testing service at the University of Sydney and is a coauthor of books about diet and diabetes. She is also a member of the Scientific Advisory Board of the Novo Foundation and of ZOE Global. SDP was the Fonterra Chair in Human Nutrition during the PREVIEW intervention. TL is employed by NetUnion, which contributed to the data collection process in the absence of commercial or financial conflict of interest with the study analysis. The authors declare that there are no other relationships or activities that might bias, or be perceived to bias, their work.

Contribution statement AR and RZ are the guarantors of this work and, as such, had full access to all of the data in the study and take responsibility for the integrity of the data. AR, JB-M and MF contributed to the design of the PREVIEW project. IAM, JAM, SDP, GS and SH were involved in developing the design of the PREVIEW adult intervention study. IC, JB-W, MPS, MF, TH-D, MD, EJS, RM and PSV collected data. AR, RZ, IC and JB-W contributed to the design of the present secondary analysis. RZ carried out the data analysis and takes responsibility for the accuracy of the data analysis. RZ, AR, JB-M, MF, EJ, MH-L, MAM, SN-C, JS, TCA, TL and KF contributed to interpretation of the data. RZ wrote the first draft of the manuscript. IC, JB-W, EJ, SDP, MPS, MH-L, MAM, GS, SH, TH-D, SN-C, JS, TCA, MD, EJS, IAM, JB-M, RM, TL, PSV, KF, JAM, MF and AR contributed to critical revision of the manuscript for important intellectual content. All authors agreed that the accuracy and integrity of the work has been appropriately investigated and resolved and all approved the submitted version of the manuscript. AR attests that all listed authors meet authorship criteria and that no others meeting the criteria have been omitted. AR had the final responsibility for the decision to submit for publication.

Open Access This article is licensed under a Creative Commons Attribution 4.0 International License, which permits use, sharing, adaptation, distribution and reproduction in any medium or format, as long as you give appropriate credit to the original author(s) and the source, provide a link to the Creative Commons licence, and indicate if changes were made. The images or other third party material in this article are included in the article's Creative Commons licence, unless indicated otherwise in a credit line to the material. If material is not included in the article's Creative Commons licence and your intended use is not permitted by statutory regulation or exceeds the permitted use, you will need to obtain permission directly from the copyright holder. To view a copy of this licence, visit <http://creativecommons.org/licenses/by/4.0/>.

References

1. Global Burden of Disease Obesity Collaborators (2017) Health effects of overweight and obesity in 195 countries over 25 years. *N Engl J Med* 377(1):13–27. <https://doi.org/10.1056/NEJMoal614362>
2. Heymsfield SB, Wadden TA (2017) Mechanisms, pathophysiology, and Management of Obesity. *N Engl J Med* 376(15):1492. <https://doi.org/10.1056/NEJMc1701944>
3. Eckel RH, Jakicic JM, Ard JD et al (2014) 2013 AHA/ACC guideline on lifestyle management to reduce cardiovascular risk: a report of the American College of Cardiology/American Heart Association task force on practice guidelines. *Circulation* 129(25 Suppl 2):S76–S99. <https://doi.org/10.1161/01.cir.0000437740.48606.d1>
4. American College of Cardiology/American Heart Association Task Force on Practice Guidelines, Obesity Expert Panel, 2013 (2014) Executive summary: guidelines (2013) for the management of overweight and obesity in adults: a report of the American College of Cardiology/American Heart Association task force on practice guidelines and the obesity society published by the obesity society and American college of cardiology/American heart association task force on practice guidelines. Based on a systematic review from the the obesity expert panel, 2013. *Obesity (Silver Spring)* 22(Suppl 2):S5–S39. <https://doi.org/10.1002/oby.20821>
5. Jensen MD, Ryan DH, Apovian CM et al (2014) 2013 AHA/ACC/TOS guideline for the management of overweight and obesity in adults: a report of the American College of Cardiology/American Heart Association task force on practice guidelines and the obesity society. *J Am Coll Cardiol* 63(25 Pt B):2985–3023. <https://doi.org/10.1016/j.jacc.2013.11.004>
6. American Diabetes Association (2016) 3. Foundations of care and comprehensive medical evaluation. *Diabetes Care* 39(Suppl 1):S23–S35. <https://doi.org/10.2337/dc16-S006>
7. Diabetes Prevention Program Outcomes Study Research G, Orchard TJ, Temprosa M et al (2013) Long-term effects of the diabetes prevention program interventions on cardiovascular risk factors: a report from the DPP outcomes study. *Diabet Med* 30(1):46–55. <https://doi.org/10.1111/j.1464-5491.2012.03750.x>
8. Salas-Salvado J, Diaz-Lopez A, Ruiz-Canela M et al (2019) Effect of a lifestyle intervention program with energy-restricted Mediterranean diet and exercise on weight loss and cardiovascular risk factors: one-year results of the PREDIMED-plus trial. *Diabetes Care* 42(5):777–788. <https://doi.org/10.2337/dc18-0836>
9. Höchsmann C, Dorling JL, Martin CK et al (2021) Effects of a 2-year primary care lifestyle intervention on cardiometabolic risk factors: a cluster-randomized trial. *Circulation* 143(12):1202–1214
10. Wing RR, Bolin P, Brancati FL et al (2013) Cardiovascular effects of intensive lifestyle intervention in type 2 diabetes. *N Engl J Med* 369(2):145–154. <https://doi.org/10.1056/NEJMoal212914>

11. Waters DL, Ward AL, Villareal DT (2013) Weight loss in obese adults 65 years and older: a review of the controversy. *Exp Gerontol* 48(10):1054–1061
12. Haywood C, Sumithran P (2019) Treatment of obesity in older persons—a systematic review. *Obes Rev* 20(4):588–598. <https://doi.org/10.1111/obr.12815>
13. Espeland MA, Rejeski WJ, West DS et al (2013) Intensive weight loss intervention in older individuals: results from the action for health in diabetes type 2 diabetes mellitus trial. *J Am Geriatr Soc* 61(6):912–922. <https://doi.org/10.1111/jgs.12271>
14. Williams RL, Wood LG, Collins CE, Callister R (2015) Effectiveness of weight loss interventions—is there a difference between men and women: a systematic review. *Obes Rev* 16(2):171–186. <https://doi.org/10.1111/obr.12241>
15. Christensen P, Meinert Larsen T, Westerterp-Plantenga M et al (2018) Men and women respond differently to rapid weight loss: metabolic outcomes of a multi-Centre intervention study after a low-energy diet in 2500 overweight, individuals with pre-diabetes (PREVIEW). *Diabetes Obes Metab* 20(12):2840–2851. <https://doi.org/10.1111/dom.13466>
16. Jesuthasan A, Zhyzhneuskaya S, Peters C et al (2021) Sex differences in intraorgan fat levels and hepatic lipid metabolism: implications for cardiovascular health and remission of type 2 diabetes after dietary weight loss. *Diabetologia*. <https://doi.org/10.1007/s00125-021-05583-4>
17. Raben A, Vestentoft PS, Brand-Miller J et al (2020) PREVIEW—results from a 3-year randomised 2 x 2 factorial multinational trial investigating the role of protein, glycemic index and physical activity for prevention of type-2 diabetes. *Diabetes Obes Metab* 23:324–337. <https://doi.org/10.1111/dom.14219>
18. Cai X, Zhang Y, Li M et al (2020) Association between prediabetes and risk of all cause mortality and cardiovascular disease: updated meta-analysis. *BMJ* 370:m2297
19. Almourani R, Chinnakotla B, Patel R, Kurukulasuriya LR, Sowers J (2019) Diabetes and cardiovascular disease: an update. *Curr Diab Rep* 19(12):161. <https://doi.org/10.1007/s11892-019-1239-x>
20. Welsh C, Welsh P, Celis-Morales CA et al (2020) Glycated hemoglobin, prediabetes, and the links to cardiovascular disease: data from UK biobank. *Diabetes Care* 43(2):440–445. <https://doi.org/10.2337/dc19-1683>
21. Fogelholm M, Larsen TM, Westerterp-Plantenga M et al (2017) PREVIEW: prevention of diabetes through lifestyle intervention and population studies in Europe and around the world. Design, methods, and baseline participant description of an adult cohort enrolled into a three-year randomised clinical trial. *Nutrients* 9(6):632. <https://doi.org/10.3390/nu9060632>
22. American Diabetes Association Professional Practice Committee (2022) 2. Classification and diagnosis of diabetes: standards of medical care in diabetes—2022. *Diabetes Care* 45(Suppl 1):S17–S38. <https://doi.org/10.2337/dc22-S002>
23. Dyussenbayev A (2017) Age periods of human life. *Adv Soc Sci Res J* 4(6):258–263. <https://doi.org/10.14738/assj.46.2924>
24. Zhu D, Chung H-F, Dobson AJ et al (2019) Age at natural menopause and risk of incident cardiovascular disease: a pooled analysis of individual patient data. *Lancet Public Health* 4(11):e553–e564
25. Kahlert D, Unyi-Reicherz A, Stratton G et al (2016) PREVIEW behavior modification intervention toolbox (PREMIT): a study protocol for a psychological element of a multicenter project. *Front Psychol* 7:1136. <https://doi.org/10.3389/fpsyg.2016.01136>
26. World Health Organization (2006) Definition and Diagnosis of Diabetes Mellitus and Intermediate Hyperglycaemia. Available from www.who.int/diabetes/publications/diagnosis_diabetes2006/en/. Accessed July 19 2017.
27. Duncan MS, Freiberg MS, Greevy RA Jr, Kundu S, Vasan RS, Tindle HA (2019) Association of smoking cessation with subsequent risk of cardiovascular disease. *JAMA* 322(7):642–650. <https://doi.org/10.1001/jama.2019.10298>
28. Chiva-Blanch G, Badimon L (2020) Benefits and risks of moderate alcohol consumption on cardiovascular disease: current findings and controversies. *Nutrients* 12(1):108. <https://doi.org/10.3390/nu12010108>
29. Malik MO, Govan L, Petrie JR et al (2015) Ethnicity and risk of cardiovascular disease (CVD): 4.8 year follow-up of patients with type 2 diabetes living in Scotland. *Diabetologia* 58(4):716–725. <https://doi.org/10.1007/s00125-015-3492-0>
30. Barbaresko J, Rienks J, Nothlings U (2018) Lifestyle indices and cardiovascular disease risk: a Meta-analysis. *Am J Prev Med* 55(4):555–564. <https://doi.org/10.1016/j.amepre.2018.04.046>
31. Mau T, Yung R (2018) Adipose tissue inflammation in aging. *Exp Gerontol* 105:27–31
32. Lovejoy JC, Sainsbury A, Stock Conference Working G (2009) Sex differences in obesity and the regulation of energy homeostasis. *Obes Rev* 10(2):154–167. <https://doi.org/10.1111/j.1467-789X.2008.00529.x>
33. Kologrivova IV, Vinnitskaya IV, Koshelskaya OA, Suslova TE (2017) Visceral obesity and cardiometabolic risk: features of hormonal and immune regulation. *Obes Metab* 14(3):3–10
34. Arpón A, Milagro FI, Santos JL, García-Granero M, Riezu-Boj J-I, Martínez JA (2019) Interaction among sex, aging, and epigenetic processes concerning visceral fat, insulin resistance, and dyslipidaemia. *Front Endocrinol* 10:496
35. Svetkey LP, Clark JM, Funk K et al (2014) Greater weight loss with increasing age in the weight loss maintenance trial. *Obesity (Silver Spring)* 22(1):39–44. <https://doi.org/10.1002/oby.20506>
36. Brokaw SM, Carpenedo D, Campbell P et al (2015) Effectiveness of an adapted diabetes prevention program lifestyle intervention in older and younger adults. *J Am Geriatr Soc* 63(6):1067–1074. <https://doi.org/10.1111/jgs.13428>
37. Armamento-Villareal R, Aguirre L, Waters DL, Napoli N, Qualls C, Villareal DT (2020) Effect of aerobic or resistance exercise, or both, on bone mineral density and bone metabolism in obese older adults while dieting: a randomized controlled trial. *J Bone Miner Res* 35(3):430–439. <https://doi.org/10.1002/jbmr.3905>
38. Pinheiro MB, Oliveira J, Bauman A, Fairhall N, Kwok W, Sherrington C (2020) Evidence on physical activity and osteoporosis prevention for people aged 65+ years: a systematic review to inform the WHO guidelines on physical activity and sedentary behaviour. *Int J Behav Nutr Phys Act* 17(1):150. <https://doi.org/10.1186/s12966-020-01040-4>
39. Weinheimer EM, Sands LP, Campbell WW (2010) A systematic review of the separate and combined effects of energy restriction and exercise on fat-free mass in middle-aged and older adults: implications for sarcopenic obesity. *Nutr Rev* 68(7):375–388. <https://doi.org/10.1111/j.1753-4887.2010.00298.x>
40. Wing RR, Espeland MA, Clark JM et al (2016) Association of weight loss maintenance and weight regain on 4-year changes in CVD risk factors: the action for health in diabetes (look AHEAD) clinical trial. *Diabetes Care* 39(8):1345–1355. <https://doi.org/10.2337/dc16-0509>
41. Berger SE, Huggins GS, McCaffery JM, Jacques PF, Lichtenstein AH (2019) Change in cardiometabolic risk factors associated with magnitude of weight regain 3 years after a 1-year intensive lifestyle intervention in type 2 diabetes mellitus: the look AHEAD trial. *J Am Heart Assoc* 8(20):e010951. <https://doi.org/10.1161/JAHA.118.010951>
42. Wing RR, Lang W, Wadden TA et al (2011) Benefits of modest weight loss in improving cardiovascular risk factors in overweight and obese individuals with type 2 diabetes. *Diabetes Care* 34(7):1481–1486. <https://doi.org/10.2337/dc10-2415>

43. Slopian R, Wender-Ozegowska E, Rogowicz-Frontczak A et al (2018) Menopause and diabetes: EMAS clinical guide. *Maturitas* 117:6–10
44. Robertson C, Avenell A, Boachie C et al (2016) Should weight loss and maintenance programmes be designed differently for men? A systematic review of long-term randomised controlled trials presenting data for men and women: the ROMEO project. *Obes Res Clin Pract* 10(1):70–84
45. Evans EM, Mojtahedi MC, Thorpe MP, Valentine RJ, Kris-Etherton PM, Layman DK (2012) Effects of protein intake and gender on body composition changes: a randomized clinical weight loss trial. *Nutr Metab (Lond)* 9(1):55. <https://doi.org/10.1186/1743-7075-9-55>
46. Tirosh A, de Souza RJ, Sacks F, Bray GA, Smith SR, LeBoff MS (2015) Sex differences in the effects of weight loss diets on bone mineral density and body composition: POUNDS LOST trial. *J Clin Endocrinol Metab* 100(6):2463–2471. <https://doi.org/10.1210/jc.2015-1050>
47. Stiegler P, Cunliffe A (2006) The role of diet and exercise for the maintenance of fat-free mass and resting metabolic rate during weight loss. *Sports Med* 36(3):239–262. <https://doi.org/10.2165/00007256-200636030-00005>
48. Goossens GH, Jocken JWE, Blaak EE (2021) Sexual dimorphism in cardiometabolic health: the role of adipose tissue, muscle and liver. *Nat Rev Endocrinol* 17(1):47–66. <https://doi.org/10.1038/s41574-020-00431-8>
49. Perreault L, Ma Y, Dagogo-Jack S et al (2008) Sex differences in diabetes risk and the effect of intensive lifestyle modification in the diabetes prevention program. *Diabetes Care* 31(7):1416–1421. <https://doi.org/10.2337/dc07-2390>

Publisher's note Springer Nature remains neutral with regard to jurisdictional claims in published maps and institutional affiliations.

Affiliations

Ruixin Zhu¹  · Ionut Craciun¹  · Jan Bernhards-Werge¹  · Elli Jalo²  · Sally D. Poppitt³  · Marta P. Silvestre^{3,4}  · Maija Huttunen-Lenz⁵  · Melitta A. McNarry⁶  · Gareth Stratton⁶  · Svetoslav Handjiev⁷  · Teodora Handjieva-Darlenska⁷  · Santiago Navas-Carretero^{8,9,10}  · Jouko Sundvall¹¹ · Tanja C. Adam¹²  · Mathijs Drummen¹²  · Elizabeth J. Simpson¹³  · Ian A. Macdonald¹³  · Jennie Brand-Miller¹⁴  · Roslyn Muirhead¹⁴  · Tony Lam¹⁵  · Pia S. Vestentoft¹  · Kristine Færch^{16,17}  · J. Alfredo Martinez^{9,18,19}  · Mikael Fogelholm²  · Anne Raben^{1,16} 

¹ Department of Nutrition, Exercise and Sports, Faculty of Science, University of Copenhagen, Copenhagen, Denmark

² Department of Food and Nutrition, University of Helsinki, Helsinki, Finland

³ Human Nutrition Unit, School of Biological Sciences, Department of Medicine, University of Auckland, Auckland, New Zealand

⁴ CINTESIS, NOVA Medical School (NMS), Universidade Nova de Lisboa, Lisboa, Portugal

⁵ Institute for Nursing Science, University of Education Schwäbisch Gmünd, Schwäbisch Gmünd, Germany

⁶ Applied Sports, Technology, Exercise and Medicine (A-STEM) Research Centre, Swansea University, Swansea, UK

⁷ Department of Pharmacology and Toxicology, Medical University of Sofia, Sofia, Bulgaria

⁸ Centre for Nutrition Research, University of Navarra, Pamplona, Spain

⁹ Centro de Investigacion Biomedica en Red Area de Fisiologia de la Obesidad y la Nutricion (CIBEROBN), Instituto de Salud Carlos III (ISCII), Madrid, Spain

¹⁰ IdisNA Instituto for Health Research, Pamplona, Spain

¹¹ Finnish Institute for Health and Welfare, Helsinki, Finland

¹² Department of Nutrition and Movement Sciences, NUTRIM, School of Nutrition and Translational Research in Metabolism, Maastricht University, Maastricht, the Netherlands

¹³ MRC/ARUK Centre for Musculoskeletal Ageing Research, National Institute for Health Research (NIHR) Nottingham Biomedical Research Centre, School of Life Sciences, University of Nottingham, Nottingham, UK

¹⁴ School of Life and Environmental Sciences and Charles Perkins Centre, University of Sydney, Sydney, Australia

¹⁵ NetUnion, Lausanne, Switzerland

¹⁶ Clinical Research, Copenhagen University Hospital – Steno Diabetes Center Copenhagen, Herlev, Denmark

¹⁷ Department of Biomedical Sciences, University of Copenhagen, Copenhagen, Denmark

¹⁸ Department of Nutrition and Physiology, University of Navarra, Pamplona, Spain

¹⁹ Precision Nutrition and Cardiometabolic Health Program, IMDEA-Food Institute, Madrid Institute for Advanced Studies, CEI UAM + CSIC, Madrid, Spain