

## RESEARCH ARTICLE

# Ecological inference using data from accelerometers needs careful protocols

Baptiste Garde<sup>1</sup>  | Rory P. Wilson<sup>1</sup>  | Adam Fell<sup>1,2</sup> | Nik Cole<sup>3</sup> | Vikash Tatayah<sup>4</sup> | Mark D. Holton<sup>1</sup> | Kayleigh A. R. Rose<sup>1</sup>  | Richard S. Metcalfe<sup>5</sup> | Hermina Robotka<sup>6</sup> | Martin Wikelski<sup>7,8</sup>  | Fred Tremblay<sup>9</sup> | Shannon Whelan<sup>9</sup>  | Kyle H. Elliott<sup>9</sup> | Emily L. C. Shepard<sup>1</sup> 

<sup>1</sup>Department of Biosciences, Swansea University, Swansea, UK; <sup>2</sup>Biological and Environmental Sciences, University of Stirling, Stirling, UK; <sup>3</sup>Durrell Wildlife Conservation Trust, La Profonde Rue, Jersey, Jersey; <sup>4</sup>Mauritian Wildlife Foundation, Vacoas, Mauritius; <sup>5</sup>Applied Sports Science, Technology, Exercise and Medicine Research Centre (A-STEM), Swansea University, Swansea, UK; <sup>6</sup>Max Planck Institute for Ornithology, Seewiesen, Germany; <sup>7</sup>Department of Migration, Max Planck Institute of Animal Behavior, Radolfzell, Germany; <sup>8</sup>Centre for the Advanced Study of Collective Behaviour, University of Konstanz, Constance, Germany and <sup>9</sup>Department of Natural Resources Sciences, McGill University, Sainte-Anne-de-Bellevue, QC, Canada

**Correspondence**

Baptiste Garde

Email: baptiste.garde@swansea.ac.uk

**Funding information**

H2020 European Research Council, Grant/Award Number: 715874; Horizon 2020; European Union; European Research Council

**Handling Editor:** Aaron Ellison**Abstract**

1. Accelerometers in animal-attached tags are powerful tools in behavioural ecology, they can be used to determine behaviour and provide proxies for movement-based energy expenditure. Researchers are collecting and archiving data across systems, seasons and device types. However, using data repositories to draw ecological inference requires a good understanding of the error introduced according to sensor type and position on the study animal and protocols for error assessment and minimisation.
2. Using laboratory trials, we examine the absolute accuracy of tri-axial accelerometers and determine how inaccuracies impact measurements of dynamic body acceleration (DBA), a proxy for energy expenditure, in human participants. We then examine how tag type and placement affect the acceleration signal in birds, using pigeons *Columba livia* flying in a wind tunnel, with tags mounted simultaneously in two positions, and back- and tail-mounted tags deployed on wild kittiwakes *Rissa tridactyla*. Finally, we present a case study where two generations of tag were deployed using different attachment procedures on red-tailed tropicbirds *Phaethon rubricauda* foraging in different seasons.
3. Bench tests showed that individual acceleration axes required a two-level correction to eliminate measurement error. This resulted in DBA differences of up to 5% between calibrated and uncalibrated tags for humans walking at a range of speeds. Device position was associated with greater variation in DBA, with upper and lower back-mounted tags varying by 9% in pigeons, and tail- and back-mounted tags varying by 13% in kittiwakes. The tropicbird study highlighted the

This is an open access article under the terms of the Creative Commons Attribution License, which permits use, distribution and reproduction in any medium, provided the original work is properly cited.

© 2022 The Authors. *Methods in Ecology and Evolution* published by John Wiley & Sons Ltd on behalf of British Ecological Society.

difficulties of attributing changes in signal amplitude to a single factor when confounding influences tend to covary, as DBA varied by 25% between seasons.

4. Accelerometer accuracy, tag placement and attachment critically affect the signal amplitude and thereby the ability of the system to detect biologically meaningful phenomena. We propose a simple method to calibrate accelerometers that can be executed under field conditions. This should be used prior to deployments and archived with resulting data. We also suggest a way that researchers can assess accuracy in previously collected data, and caution that variable tag placement and attachment can increase sensor noise and even generate trends that have no biological meaning.

#### KEYWORDS

accelerometry, accuracy, bilogger, biotelemetry, calibration, DBA, tag placement

## 1 | INTRODUCTION

Animal-attached tags have revolutionised our understanding of wild animal ecology (Bograd et al., 2010; Sequeira et al., 2021; Yoda, 2019). Of the sensors often used, accelerometers (Yoda et al., 1999) are regarded as a particularly powerful tool for studying wild animal behavioural ecology, with studies using them to look at the occurrence and intensity of behaviour (Chakravarty et al., 2019; Fehlmann et al., 2017), assess movement characteristics (Shepard et al., 2008) and as a proxy for energy expenditure (Wilson et al., 2020). The latter has developed rapidly since the demonstration that dynamic body acceleration (DBA) is related to energy expenditure across a range of vertebrates and invertebrates (Halsey et al., 2009; Wilson et al., 2006, 2019). Such measurements have great potential for understanding animal strategies, in particular studying how animals respond to changes in food availability (Kokubun et al., 2011), climate (Gudka et al., 2019) and anthropogenic threats or activity (Nickel et al., 2021; Payne et al., 2015; Yorzinski et al., 2015).

In terrestrial mammals (cf. Field et al., 2011 for a comparison with marine mammals), accelerometers tend to be attached using collars, providing a largely standardised position of attachment, although collars have their own complications in terms of the need to obtain a good fit and account for collar rotation in data interpretation (Wilson et al., 2020). In contrast, researchers use different attachment positions on birds. For instance, tags are deployed on the lower back, the tail or the belly of seabirds depending on the species and the tag position associated with least detriment (Elliott, 2016; Ropert-Coudert et al., 2003; Vandenabeele et al., 2014). Researchers working with raptors may deploy tags using backpack or leg-loop harnesses (e.g. Harel et al., 2017; Williams et al., 2015 respectively), which results in differences in tag position. The widespread availability and use of accelerometers mean that large datasets, collected over years, are now available, providing valuable information about behaviour, including flight effort across temporal and spatial scales (Kranstauber

et al., 2011). Unsurprisingly, these data have been collected using different methods of attachment and by deploying a variety of different tags without critical analysis of the compatibility of different datasets (Sequeira et al., 2021).

Tag position on the body is likely to affect acceleration values, as pointed out by Wilson et al. (2020), who noted that DBA (Qasem et al., 2012) varied with tag position in humans wearing back- and waist-mounted tags running on a treadmill (with DBA values varying by ~0.25 g at intermediate speeds). This is easy to understand since humans have a flexible spine. Birds, on the other hand, have an essentially immovable box-like thorax (Baumel, 1993). Differences in acceleration between tags placed on the back and the neck (Kölzsch et al., 2016) or the tail (Elliott, 2016) are easy to associate with independent movement of the head or tail, but the thorax itself can experience pitch changes over the wingbeat cycle (Su et al., 2012; Tobalske & Dial, 1996), which may affect the acceleration recorded by loggers depending on their position. In line with this, we note that the precise position of the accelerometer chips on the circuit boards may also affect the acceleration measured by the sensors, particularly in cases where the circuit board is long relative to the bird's back and where the chip could be positioned close to either end.

At a more fundamental level, the fabrication of loggers with accelerometers involves extensive heating as the sensors are soldered to the circuit boards. Although the literature notes that there is a temperature-dependent output of accelerometers under normal operating conditions (this normally being corrected within the chip; e.g. Yin et al., 2019), the heating process changes the output versus acceleration in a fundamentally different manner (Ruzza et al., 2018), even if they are carefully calibrated prior to this process (see <https://www.mouser.co.uk/datasheet/2/389/dm00103319-1798035.pdf>). Specifically, while the vector sum of the three acceleration channels should be 1 when a unit is at rest (Won & Golnaraghi, 2009), this can vary after heating, resulting in error in the estimation of the Earth's gravitational component. This can in turn introduce error

into the estimation of the 'dynamic' acceleration, or acceleration due to movement, which is the basis for acceleration-based proxies for energy expenditure (Wilson et al., 2020). While the engineering literature discusses methods for identifying and correcting inaccuracies in accelerometer readings using rotational-tilt platforms or motion rate tables (or similar) and adopting calibration algorithms (Sipos et al., 2011), approaches such as Kalman filter covariance matrices (Beravs et al., 2012), dynamic filtering for bias issues (Batista et al., 2011) or iterative simulations for gain and bias compared to measured values (Won & Golnaraghi, 2009), the importance of this has not been highlighted in the biological literature (Cade et al., 2021).

In this manuscript, we assess the error associated with the sensors themselves and how the position and fixing of the accelerometer on the study animal affects acceleration metrics before proposing simple solutions to minimise these issues. Specifically, we examine the variability in VeDBA associated with improperly calibrated tri-axial accelerometers, using a case with humans walking defined courses at fixed speeds. We then examine how tag position affects VeDBA and signal amplitude using pigeons *Columba livia* flying in a wind tunnel with two tags in different locations on their back. Finally, we perform retrospective analyses of two field studies to examine how different deployment protocols may affect accelerometer-based results, in; (a) red-tailed tropicbirds *Phaethon rubricauda* equipped with two different types of loggers attached using marginally different protocols in separate seasons, and (b) black-legged kittiwakes *Rissa tridactyla* equipped with tags either on the back or on the tail, as two positions favoured by seabird researchers for tag placement. Finally, we examined publications from biologists using accelerometers over the last 2 years to determine how many of them had indicated an accelerometer calibration protocol.

## 2 | MATERIALS AND METHODS

### 2.1 | Measurement of acceleration accuracy of tri-axial sensors

We first calibrated tri-axial accelerometers within five Daily Diary tags (inch board) (Wildbyte Technologies, Swansea University, UK; Wilson et al., 2008), by setting them motionless on a table in a series of defined orientations (each for c. 10 s). Six orientations (hereafter the '6-O method') were chosen so that the tags always had one of their three acceleration axes perpendicular to the Earth's surface and these were rotated according to the six axes of a die so that each of the three accelerometer axes nominally reads -1 and 1 g (Figure 1a).

The outputs of these motionless calibrations were then used to derive the six respective maxima of the acceleration vectorial sum given by;

$$\|a\| = (x^2 + y^2 + z^2)^{0.5},$$

where  $x$ ,  $y$  and  $z$  are the raw acceleration values, for the periods when they were held still. Note that there are six maxima because each axis has two values: a minimum and a maximum, which become positive in the vectorial sum. In a device with perfect acceleration sensors, all maxima should be 1.0 g (Won & Golnaraghi, 2009) (although the acceleration on earth varies with latitude by up to a maximum of 0.0053 g due to the earth's shape and the centrifugal force generated by the planet spinning as well as other processes; Novák, 2010). However, values were always either marginally higher or lower than 1.0 g (see Section 3). Furthermore, the two maxima for each axis differed (e.g. Figure 1b). This therefore requires two steps to be corrected, where; (a) a correction factor is applied to the values in each axis to ensure both absolute 'maxima' per axis are the same and then (b) a gain is applied to both readings to convert them to be exactly 1.0 g. Thus, for each axis used, the following equation is subtracted;

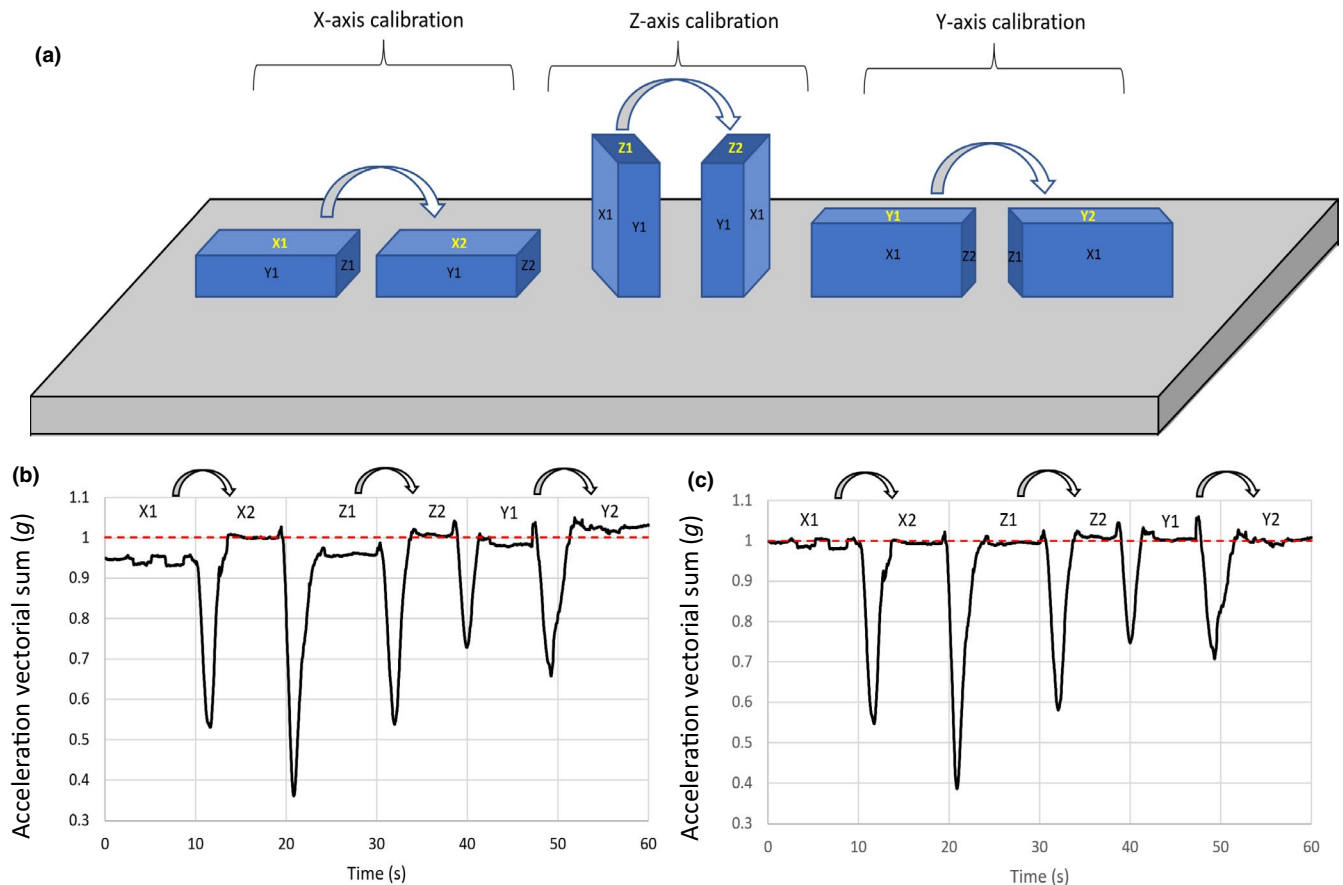
$$\left( \frac{(Value_{x,y,z \min} + Value_{x,y,z \max})}{2} \right),$$

where  $x$ ,  $y$  and  $z$  refer to the three respective orthogonal axes. Then, each axis is multiplied by a gain value that scales the absolute minimum and maximum values to become 1.0 g. Thus, if  $x_{\min} = -1.0$  g and  $x_{\max} = 0.8$  g, this gives;  $[(-1.0 + 0.8)/2] = -0.1$ . The  $x_{\min}$  then becomes  $-0.9$  g and  $x_{\max} = 0.9$  g. The resultant would then be scaled by multiplying by  $1.0/0.9 = 1.1111$  (Figure 1c).

Subsequently, tags were deployed on 12 people, attached to the lower back using elastic. All participants were healthy adults and gave informed consent (protocol approved under code: PG201416A). Each person walked back and forth on a 25 m straight-line course at four different speeds (0.69, 0.97, 1.25 and 1.53 m/s; randomly ordered), each for 3 min. Speeds were held constant using a metronome. The mean VeDBA (defined as  $VeDBA = (x_D^2 + y_D^2 + z_D^2)^{0.5}$  where  $x_D$ ,  $y_D$  and  $z_D$  are the dynamic body acceleration recorded by each of the three channels of acceleration—for details see Wilson et al., 2020) was calculated across each 3-min trial with, and without, the calibration corrections.

### 2.2 | Effect of tag position on acceleration

The effect of tag position was first tested on three pigeons *Columba livia* flying under controlled conditions in a wind tunnel at speeds ranging from 10 to 22 m/s. Birds were equipped simultaneously with two tags recording acceleration at 150 Hz ('Thumb' Daily Diary [DD] units, hereafter type 1 tag). One tag was placed on the upper back, the other on the lower back, both in the dorsal mid-line. Units measured  $22 \times 15 \times 9$  mm and the distance between them was c. 4 cm. The tagging of pigeons and the procedure of flight in a wind tunnel was approved by the government of Upper Bavaria, 'Sachgebiet 54—Verbraucherschutz, Veterinärwesen, 80538 München' with the record number: Gz.: 55.2-1-54-2532-86-2015.



**FIGURE 1** Simple, field viable six-orientation calibration procedure for helping correct for accelerometer offset and gain errors. (a) Shows the tag on a flat surface such as a table, with each of the six orientations uppermost (for periods of e.g. 5–10 s). (b) Shows the raw vectorial sum of the acceleration data of a typical tag rotated to adopt each of the six positions and (c) shows the same data after correction. In this case, the respective offsets and gains for the three axes were;  $A_x$  (offset  $-0.027$  g, gain  $1.023$  g),  $A_z$  (offset  $-0.018$  g, gain  $1.021$  g) and  $A_y$  (offset  $0.025$  g, gain  $1.000$  g). Rotation of the tag at various angles led to pre-correction acceleration vectorial sums varying between  $0.948$  and  $1.037$  g. These reduced to between  $0.996$  and  $1.007$  g post-correction. Note how the correction process affects all acceleration data, including such times as when the tag is moving appreciably (such as during rotation) and has centripetal and/or linear acceleration values (manifest by the dips and peaks between flat tops)

To ensure that only steady sustained level flight was included in the analysis, we selected sections of consistent flapping flight lasting for at least 2 s (corresponding to c. 10 wingbeat cycles), with no gliding or wingbeat interruptions. The stability of the flight was controlled by selecting sections where VeDBA values, smoothed over 1 s, were between  $0.75$  and  $3$  g and varied by  $<1.0$  g, with no apparent trend (increasing or decreasing) over time. We also discarded the first second of any flight.

We first assessed whether the VeDBA values differed with tag position. VeDBA was calculated using a 2 s smoothing window to derive the 'static' component (Shepard et al., 2008) and then subtracting static values from the raw acceleration data in each axis, before summing the differences vectorially (Qasem et al., 2012). We then assessed whether the peak amplitude per wingbeat differed according to tag location, with the peak amplitude calculated as the difference between the maximum and the minimum value of heave acceleration. For this, peaks were detected in the heave axis (Bishop et al., 2015) to synchronise every wingbeat to a defined start point. Finally, to understand which parts of the wingbeat signal were

affected by the difference in tag position, we analysed the acceleration signals across average wingbeats in the three acceleration axes. Each acceleration datapoint was attributed to a percentage progression across the wingbeat cycle. Then, for every whole percentage value, the heave, surge and sway accelerations were averaged across 10 wingbeats from the same logger. The average values for the heave, surge and sway accelerations of the upper back-mounted tag were expressed against the values of the lower back-mounted tag in a linear model, the slope of which was used to determine the difference in signal amplitude between the two tags for each acceleration axis.

To examine putative changes in heave signal amplitude (see above) and VeDBA associated with tag placement, we compared them between upper and lower back tags using a paired Student's *t*-test for VeDBA and a Wilcoxon signed-rank test for amplitude (due to non-homogeneous variances between the two groups [Levene's Test:  $F$ -value =  $4.159$ ,  $p = 0.049$ ]). Wingbeat frequency also contributes to the variation of VeDBA (Van Walsum et al., 2020). Wingbeat frequency was also compared between the two tags using a paired

Student's *t*-test. The statistical analysis was performed in RStudio, using R version 4.0.3 (R Core Team, 2020).

### 2.3 | Acceleration error in field studies

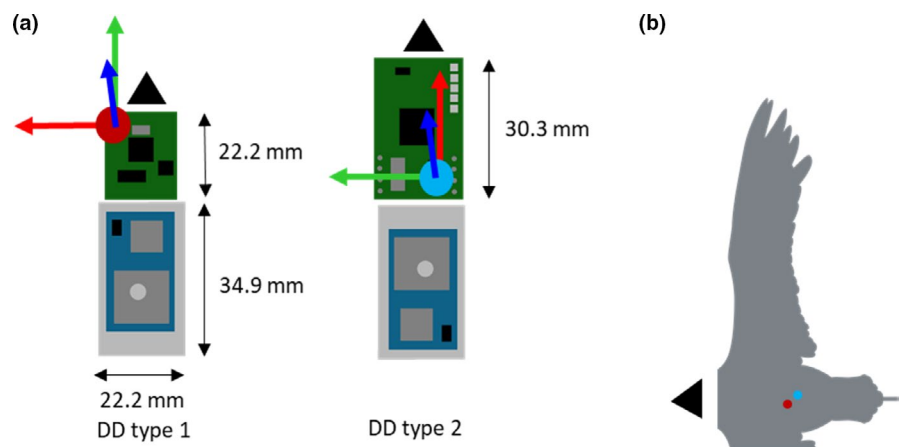
As a post hoc example of how different deployment protocols may affect accelerometer-based results, we compared the amplitude of the heave acceleration signal and VeDBA during the flight of black-legged kittiwakes for two different setups. Twelve kittiwakes were captured and tagged during their breeding season on Middleton Island, Alaska (59.43°N, 146.33°W) and equipped with an accelerometer (type 1 DD) placed under their tail, sealed inside heat shrink tubing for waterproofing: This method is popular as it prevents the bird from trying to preen off the package. We equipped four other birds with the same tags placed on their back and wrapped in two zip-lock bags to protect them from splash damage, while allowing pressure sensors to function: This other method is particularly favoured in studies aiming to measure altitude, as it does not require a full waterproofing, which alters pressure recordings. Tail-mounted tags were also tied to a GPS, while the back-mounted units were in an independent package so that the back-mounted logger package was 1 g heavier (total masses; tail = 21 g, back = 22 g). Two 1-min sections of level flapping flight were identified for each tag and deployment. The selection was made based on the altitude data from the loggers' pressure sensors (<5 m difference between the highest and lowest altitude measurements), after verifying that there was no interruption in the wingbeat pattern found in heave, ascertaining that the bird flapped regularly for the whole period.

In a similar manner, we examined red-tailed tropicbird data from two different nesting seasons using tags placed in a standard position on their lower back while using different tags. For this, red-tailed tropicbirds at Round Island (19.85°S, 57.79°E) were captured on their nests and equipped with two different units by the same person using four strips of Tesa tape placed under the feathers and around the tags (Wilson & Wilson, 1989). Ethical permissions for the use of biologgers on wild red-tailed tropicbirds and black-legged kittiwakes were granted by Swansea University AWERB, permit 040118/39 and 110619/1590 (IP-1819-18) respectively.

Nineteen birds were tagged between February and March 2018 (using type 2 DDs, Figure 2) while 36 birds were tagged during the second season (September and October 2018, type 1 DDs, Figure 2). Importantly, during the second season though, the tags were attached using only three strips of tape. At the time, this was considered adequate and helped reduce the weight of the unit. Both units were set to the same sampling frequency (40 Hz). They were, however, built with different accelerometers (type 1: LSM9DS1, type 2: LSM303DLHC, STMicroelectronics, Geneva, Switzerland), with a substantial difference in sensitivity (type 1: 0.061 mg, type 2: 1.0 mg sensitivity at  $\pm 2$  g range). In addition, the accelerometer is placed at the front of the type 1 unit, and at the back of the type 2 unit, leading to an estimated distance of up to 1 cm between them once placed on the bird's back. The type 1 tags used in the second season were slightly lighter (masses; type 1 unit = 25.0 g, type 2 unit = 27.7 g). As with the kittiwakes, level flapping flight was selected to discard the effect of gliding, thermal soaring or climbing on acceleration metrics (Williams et al., 2015). We considered level flapping flight to be any section where VeDBA > 0.3 g and where the rate of change of altitude (measured by the pressure sensor of the Daily Diary at 4 Hz) was between -0.5 and 0.5 m/s. To get an estimation of flight effort that is not affected by signal amplitude, wingbeat frequency was also calculated for tropicbirds. Wingbeats were identified from peaks in the dynamic heave acceleration (dorsoventral), smoothed over three events (0.075 s). Each segment from peak to peak was counted as a wingbeat cycle, and their duration was used to calculate wingbeat frequency.

VeDBA, wingbeat frequency and the amplitude of heave in level flapping flight were derived from accelerometer data for both tropicbirds and kittiwakes following the same process as pigeons. Data were not paired, since birds carried one tag at a time, so non-paired Student's *t*-tests and Wilcoxon tests were used to compare the three parameters between loggers.

Since both the tropicbird and kittiwake data were collected from uncalibrated accelerometers (see above), a situation that we believe represents most of the accelerometer deployments made by the community to date, we attempted to assess the potential for accelerometer error post hoc. We did this by measuring the variability in the vectorial sum at times when the tags were motionless (although



**FIGURE 2** (a) Location of the accelerometer (interception point of the three arrows depicting tri-axial acceleration) on the circuit boards of two different DD tags (the battery is in light grey, the GPS in blue and the DD in green) and (b) location of the accelerometers within the tags on the back of a red-tailed tropicbird for the type 1 (red dot) and type 2 (blue dot) tags

not on the study animals) and in different tag orientations, finding up to five different orientations per logger (e.g. when units were placed inside bags and the bag placed on the floor/ground). The mean vectorial sum of the three axes of acceleration was calculated for each orientation, and compared between loggers and between tag versions using two ANOVAs.

## 2.4 | Calibration protocols within the literature

To examine the awareness of the scientific community about potential for variability in accelerometer data that could be corrected by calibration, we searched the scientific literature from the past 3 years (2019, 2020 and 2021) to find 100 papers which used accelerometers on animals. The search was conducted on Google scholar, using the keywords 'accelerometer' and 'animal'. We examined the first 100 papers documenting deployments of accelerometers on animals, excluding reports and reviews of other people's deployments, to note if there was any mention of an accelerometer calibration process.

## 3 | RESULTS

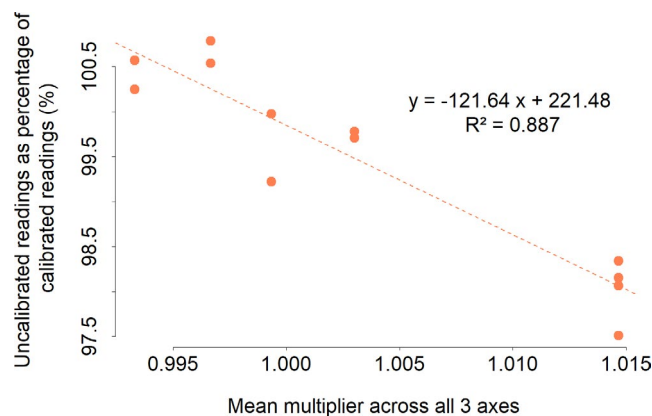
### 3.1 | Measurement of acceleration accuracy of tri-axial sensors

Static calibrations of the 15 separate accelerometers within the five tags showed that axis offsets needed corrections up to between  $-0.043$  and  $0.025$  g and had multiplicative factors ranging between  $0.97$  and  $1.023$ . Mean multipliers (across all three axes) for any one tag ranged between  $0.9933$  and  $1.0147$ .

In the walking speed trials with people, the minimum and maximum differences in VeDBA between calibrated and uncalibrated tags for any one participant ranged between  $0.37\%$  and  $5.04\%$ . Mean VeDBAs per participant across speeds showed that the difference between calibrated and uncalibrated tags could amount to  $2.5\%$  of the calibrated reading. Inspection of the measures undertaken to calibrate each tag (see above) showed that the percentage difference between the uncalibrated and calibrated was primarily due to the acceleration multiplier (see above; Figure 3).

### 3.2 | Effect of tag position on raw acceleration in pigeons

In our controlled study with pigeons, plots of surge versus heave acceleration showed how wingbeats under identical conditions returned markedly different profiles of acceleration depending on the tag position (Figure 4a). We also found corresponding differences in values of the heave and surge according to tag position (Figure 4b-d): the upper tag recorded a lower magnitude of surge (LM: Estimate =  $0.76$ ,  $p < 0.001$ ,  $R^2 = 0.41$ , with a slope  $< 1$ , Figure 4c), but a higher magnitude of heave than the lower tag (LM: Estimate =  $1.2$ ,



**FIGURE 3** Percentage difference between VeDBA values derived during controlled speed trials with walking humans using uncalibrated against calibrated (corrected) values. The mean multiplier is one applied across all three axes and does not represent the range of values between axes, which can be considerably higher (see text)

$p < 0.001$ ,  $R^2 = 0.97$ ; Figure 4b). The sway model, however, showed a weak fit (LM: Estimate =  $0.18$ ,  $p < 0.001$ ,  $R^2 = 0.18$ ) and the slope of their relationship was  $< 1$  (Figure 4d).

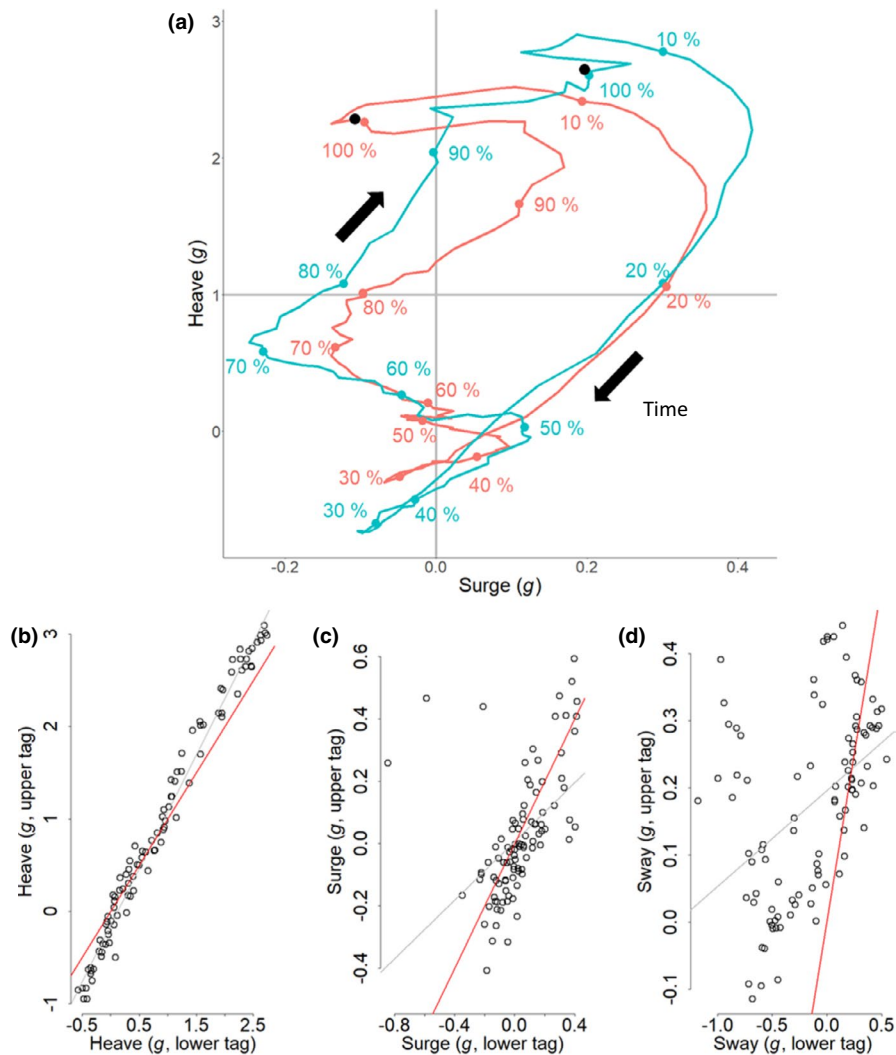
### 3.3 | Effect of tag position on acceleration metrics

Differences in raw acceleration values also resulted in some variation in acceleration-derived metrics in both the controlled studies on pigeons and in the post hoc studies on wild birds: Upper back-mounted tags recorded a slightly higher VeDBA than lower back-mounted tags in pigeons (paired Student's  $t$ -test: difference =  $-0.167$ ,  $t = -2.184$ ,  $p = 0.043$ ), which was largely due to higher heave values (Wilcoxon signed-rank test: difference =  $0.82$  g,  $W = 94$ ,  $p = 0.007$ ) (Figure 5a,d).

In red-tailed tropicbirds, the type 1 tags, used during the second deployment, recorded both a higher VeDBA (by  $25\%$ ) (Wilcoxon test: difference =  $0.14$  g,  $W = 19$ ,  $p < 0.001$ ) and heave amplitude (by  $29\%$ ) (Student's  $t$ -test: difference =  $0.40$  g,  $t = -11.78$ ,  $df = 47.718$ ,  $p < 0.001$ ) than the type 2 tags (Figure 5b,e), despite there being no evidence for a difference in body mass (Student's  $t$ -test:  $t = 0.282$ ,  $p = 0.779$ ) or wing area (Student's  $t$ -test:  $t = -0.773$ ,  $p = 0.446$ ) between deployments. In kittiwakes, the tail tags recorded both a higher VeDBA (by  $18\%$ ) (Wilcoxon test: difference =  $0.14$  g,  $W = 14$ ,  $p = 0.001$ ), and a higher heave amplitude (by  $27\%$ ) (Student's  $t$ -test: difference =  $-0.60$  g,  $t = -4.4304$ ,  $df = 9.0178$ ,  $p = 0.002$ ) than the back-mounted tags (Figure 5c,f).

There were no differences in estimated wingbeat frequency according to where tags were mounted in either pigeons (paired Student's  $t$ -test:  $t = 1.954$ ,  $p = 0.067$ ) or kittiwakes (Wilcoxon test:  $W = 100$ ,  $p = 0.227$ ). In tropicbirds, there was a seasonal difference in wingbeat frequency, with type 2 tags recording a higher wingbeat frequency (by  $3\%$ ) than the type 1 DDs (Student's  $t$ -test: difference =  $-0.14$  Hz,  $t = 3.72$ ,  $df = 35.19$ ,  $p < 0.001$ ).

**FIGURE 4** (a) Plot of mean heave versus surge acceleration through time for a pigeon during an average wingbeat cycle derived from a lower back- (red) and an upper back-mounted tag (blue), both recording at 150 Hz. Each point corresponds to a mean value of acceleration calculated across all flights for a given percentage through the wingbeat, starting from the peak of acceleration of the downstroke (black point). The value of each point was smoothed over a window of 10 points (10%) to reduce noise. Regressions of the upper against lower tag acceleration for defined points throughout the wingbeat cycle show; (b) heave, (c) surge and (d) sway accelerations (note the changing axis scales). The regression between the two tags is represented in grey, and the  $y = x$  line is shown in red



We found a positive relationship between wingbeat frequency and heave amplitude during tropicbird level flapping flight (LMM, season 1: estimate = 0.249, intercept = 0.254, SE = 0.021,  $t = 13.339$ ,  $p < 0.001$ ; season 2: estimate = 0.746, intercept = -1.084, SE = 0.024,  $t = 19.710$ ,  $p < 0.001$ ;  $R_m^2 = 0.56$ ,  $R_c^2 = 0.72$ ). The slope was, however, steeper during season 2 (Figure 6), in line with the higher amplitude of heave recordings (see Figure 5).

### 3.4 | Post hoc quantification of accelerometer inaccuracy

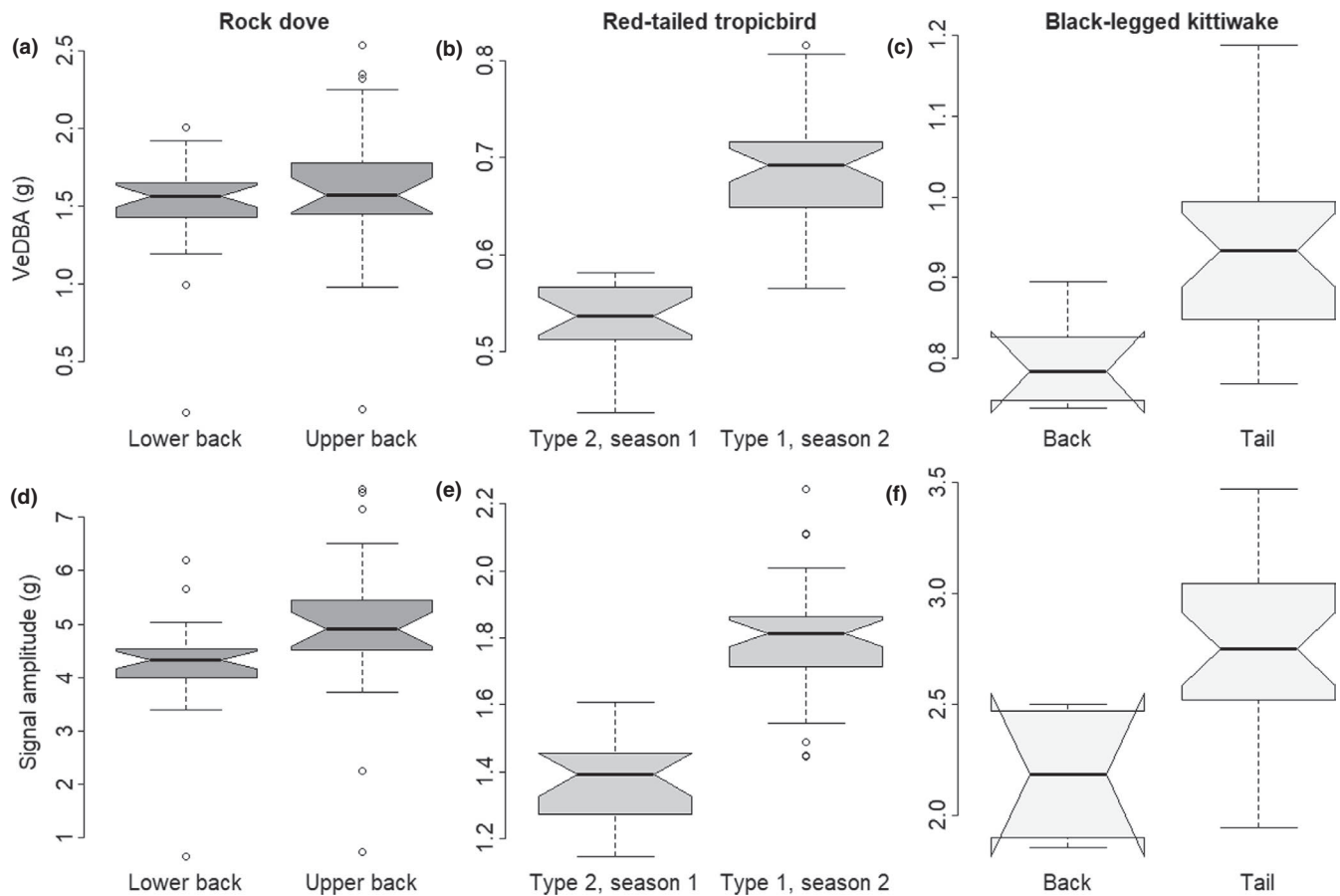
The comparison of stationary data recorded by the two tag types deployed on tropicbirds indicated that the vectorial sum was lower in the type 2 tag (Wilcoxon test:  $W = 98$ ,  $p = 0.005$ , difference = 0.03 g; Figure 7). Standard deviations of the vectorial sum (type 1: 0.03; type 2: 0.05) however, indicate that errors are more variable within type 2. We could not determine multipliers for the three acceleration channels to calibrate the data based on this approach, as the heave and surge channels did not cover the whole spectrum of their possible distribution (-1 to 1 g) while the tag was motionless.

### 3.5 | Calibration protocols within the literature

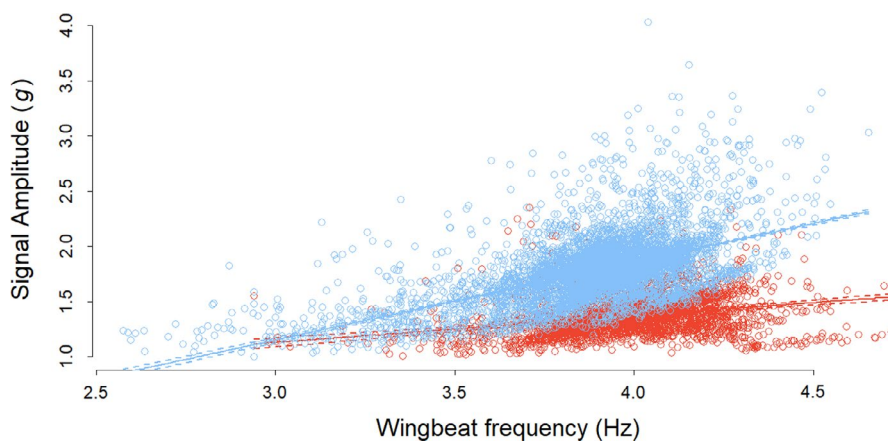
Of the 100 papers examined, only five mentioned any calibration protocol for accelerometers that might have led to the correction of at least one of the sources of errors mentioned above (although many were not explicit enough to be sure). No publication explicitly referred to all potential errors.

## 4 | DISCUSSION

This work highlights that there is currently virtually no discussion of acceleration calibration within the scientific literature even though variation in acceleration measured by tags on flying birds (and presumably other animals engaged in any activity) can be due to; (i) differences in sensitivity (Table S11) and calibration between sensors, and that, in any event, variation occurs due to (ii) the placement of the tag (or the sensor within the tag) as well as (iii) variation due to the animal itself. It is therefore normal to attribute all variation to the activity of the animal itself but the validity of doing this is critically dependent on the other two factors. Indeed, as our work with



**FIGURE 5** Comparison of VeDBA (a–c) and heave signal amplitude (d–f) between tags in pigeons (a, d), red-tailed tropicbirds (b, e) and black-legged kittiwakes (c, f). Bold horizontal lines indicate the median vectorial sum for each tag, extremes of the box the upper and lower quartiles, and whiskers the extreme values (excluding outliers, represented by open circles). Notches represent  $1.58 \text{ IQR}/\sqrt{n}$  ( $n$  being the number of observations) on either side of the median and suggest a significant difference when they do not overlap



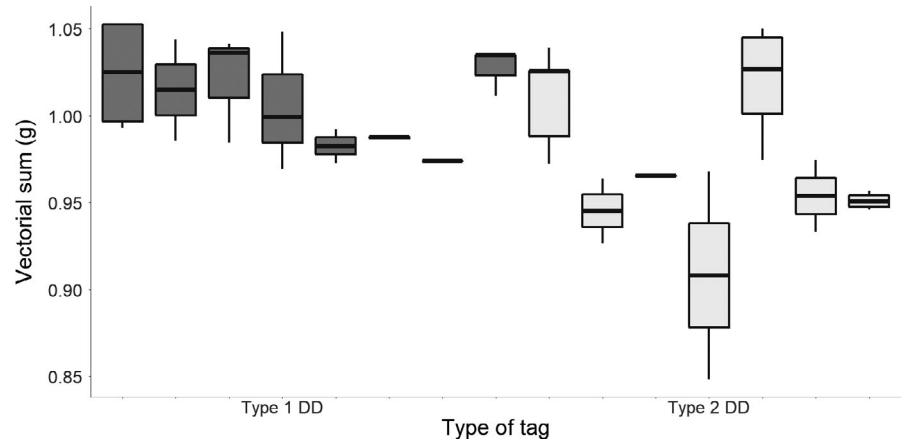
**FIGURE 6** Relationship between the wingbeat frequency and heave amplitude of red-tailed tropicbirds during two field seasons. Birds were equipped with type 2 tags in season 1 (red) and type 1 tags in season 2 (blue). In season 2, tags were attached using one less strip of tape, which could reduce tag stability. Full lines represent the linear relationship between wingbeat frequency and amplitude and dashed lines the confidence intervals

tropicbirds shows, multiple influences can interact and make it hard, if not impossible, to separate causes from effects in acceleration signatures. Studies that do not consider points (i) and (ii) may, therefore, be misrepresenting animal activity both in terms of intensity and extent. We propose an easy, rapid calibration method, that can be conducted at a field site with minimal equipment, and substantially reduces sensor-induced errors. We also provide recommendations about tag attachment methods to avoid interpreting tag position effects as biologically meaningful.

The variation in acceleration is used to examine animal behaviour within a multitude of research thrusts, some of which use acceleration data in slightly different ways. These range from the precise definition of heave, surge or sway values, or their derivatives (such as pitch and roll and DBA), which can be used in algorithms to identify behaviours (e.g. Fehlmann et al., 2017; Nathan et al., 2012) through the use of acceleration-derived metrics to define energy expenditure (in e.g. doubly labelled water vs. DBA regressions; Pagano & Williams, 2019), to measure travelling speed (Bidder et al., 2012;



**FIGURE 7** Comparison of the vectorial sum of the raw acceleration recorded by various immobile type 1 (dark boxes) and type 2 tags (light boxes). Each point corresponds to a different unknown orientation. Thick black lines indicate the median vectorial sum for each tag, extremes of the box the upper and lower quartiles, and whiskers the extreme values (excluding outliers)



Gunner et al., 2021) and studies looking at animal effort over time and space (Duriez et al., 2018; Halsey et al., 2011). Errors due to sensor inaccuracy and differences in placement are most severe when axes are considered individually (e.g. deriving pitch from the surge axis). However, they are also relevant when all three orthogonal axes are considered, as inaccuracies in one axis can either be mitigated or compounded by inaccuracies in another (see Figure 3). Within vectorial (or absolute) sums of acceleration metrics, the overall error will depend on the relative errors of the different axes and the extent to which they vary during the activity in question. For example, in flapping birds or bats, almost all variation in acceleration measures occur in the heave and surge axes (e.g. Wilson et al., 2008, and see Figure 4a–d) so errors in the sway are less important. Cognisance of the axis-specific errors will help mitigate those errors that could be interpreted as a biological effect.

#### 4.1 | Calibrations

The issue of inaccurate sensors can be at least partially mitigated by the 6-O method suggested in this work, although we note that this only effectively calibrates between  $-1$  and  $1$  g, while the gravitational component experienced by some animals, for example, during turning (Wilson et al., 2013), will increase beyond these limits. Although, ideally, the tags should be calibrated with each of the accelerometer axes held perfectly vertically (something that is challenging to do once a circuit board is potted in a housing), in practice, this is not critical, and holding the axes as close to vertical as possible should suffice. This is because the response of an accelerometer to the static acceleration of the earth's gravity follows a sine wave so that an accelerometer that is placed  $10^\circ$  off the vertical (i.e. at  $80^\circ$ ), reads a value that is 98.5% of the full-scale value that would be given if the accelerometer axis were held perfectly vertical (so that if there is an error in this axis, 98.5% of it will be covered by this orientation). If it is impossible to reliably estimate the angle of the logger because of the housing, for instance, gently rotating the logger around in every direction would be needed to cover all six orientations, although this process is particularly sensitive to centripetal acceleration, which is added to the static signal, so the rotation

speed must be very slow. Using this calibration will therefore allow researchers to ascribe the most substantive variation in acceleration signal to specific axes.

Our suggestion of dealing with errors post hoc by looking at the vectorial sum of the acceleration when tags were stationary could not be used to correct the various axes in our study because all six orientations required for the calibrations were not known, and the study subjects did not adopt the appropriate postures. However, this process does at least serve to indicate some of the extent of deviation of the sensors from the expected range (see Figure 5). In this regard, we note that we have presented results in this work from only one tag manufacturer (type 1 and type 2 tags use two different chips; the type 1 is far superior having a sensitivity of  $0.061$  mg [in a range of  $\pm 2$  g], while the type 2 only has a sensitivity of  $1$  mg for this range), but we have measured, in passing, more substantive variation by other manufacturers (see Table S11).

#### 4.2 | Why does accelerometer position affect acceleration?

The position of an accelerometer on an animal should affect the acceleration perceived by the sensor during movement according to its location, and indeed that is the basis behind many biomechanical studies (e.g. Giansanti et al., 2003; Hyde et al., 2008). However, there is poor appreciation in the behavioural ecology community that this premise is also valid for trunk-mounted tags. This may seem irrelevant for birds where the thorax can be considered a single immobile unit, in contrast to bead-string models that may indicate what is expected in species with a flexible back (Underhill & Doyle, 2006). Our work has shown, however, that the location of trunk-mounted accelerometers on birds does play a role in modulating acceleration values (Figure 4) and this is presumably because the bird body pitches during the wingbeat cycle (although part of the differences that we observed may also be due to the movement of the scapulae and perhaps the neck during flapping). Depending on the degree of pitch, the centre of pitch rotation and the position of the accelerometer, this will change the extent of movement ( $d$ ), which can be defined by the length of a section of a circumference around the

centre point of rotation according to  $D = 2\pi r(360/P)$ , where  $r$  is the radius or distance between the centre of pitch rotation and the sensor, and  $P$  is the maximum pitch angle (in degrees). The duration of the wingbeat cycle will define the vertical speed of the tag at its location, with the recorded acceleration being the change in speed over time. The formula shows how the effect of changed acceleration will be more prominent with increasing distance of a tag from the centre point of rotation and so will have the greatest potential to vary in larger birds, all other things being equal. This may also account for the changed acceleration metrics in tail- versus body-mounted tags (Figure 5c,f) in our kittiwake study, although part of that is presumably due to the relative instability of the tail. In fact, to our knowledge, there is little information on the extent of bird body change in pitch during flight (but see Su et al., 2012; Tobalske & Dial, 1996) although controlled experiments with multiple calibrated accelerometers could change that. In the meantime, we suggest that users attempt to place accelerometers in identical positions on their study animals for comparative purposes, which should also involve knowing the position of the sensors within the tags rather than just considering the tags themselves (Figures 1 and 3).

Fortunately, there is no a priori reason why tags placed differently on a bird thorax or inaccurate accelerometers should affect determination of wingbeat frequency since points of inflection will still be represented correctly with respect to time within the wingbeat cycle (Figure 4a,b). Indeed, this is what we observed in our controlled pigeon flight trials and in the kittiwakes (despite a small difference in tag mass, see Whelan et al., 2021). In contrast, the tropicbird work indicates that there was a real change in wingbeat frequency across the two seasons, and this seems to be related to changes in environmental conditions (Garde et al., in prep).

### 4.3 | Post hoc studies and differences between tags

The bigger question is the extent to which observed differences in uncalibrated accelerometers can be attributed to the animals rather than to tag position, attachment techniques or sensor variability. In our tropicbird example, the differences in VeDBA and signal amplitude were not consistent with the differences found in pigeons, where higher values were recorded in the upper tag. This suggests that the variation in signal amplitude in tropicbirds was not related to tag position. Furthermore, the difference in amplitude was appreciably larger between the two tag types on tropicbirds, than between the upper and lower tags used in pigeons, even though the tropicbird tags were placed in a way that minimised the distance between their respective accelerometers. The scale of the variability is not consistent with that caused by uncalibrated sensors, as the difference between vectorial sum values in 6-O calibrated tags and uncalibrated tags (in general) amounted to a mean maximum of 2.5%. In contrast, in flapping flight, the difference in VeDBA between tags and seasons reached 25%. This order of magnitude difference might appear to indicate seasonal changes in flight effort. However, this also

appears unlikely, as higher signal amplitudes were recorded in the season with lower wingbeat frequencies, despite the fact that these parameters are positively correlated within each season (Figure 6). It therefore appears that the factors driving seasonal differences in signal amplitude are different to those driving seasonal changes in wingbeat frequency.

The difference in signal amplitude may also arise due to changes in the stability of the tag attachment between seasons. Wilson et al. (2021) note how accelerometers in loosely fitted collars on terrestrial mammals provide a signal that varies with collar tightness. Although the use of tape to attach devices to birds (Wilson et al., 1997) provides a much more intimate association between the tag and the bird body, we believe that if this method is not standardised (and it was not in our study, as the amount of tape varied between seasons), it can lead to major variation in acceleration values, particularly in animals with highly dynamic movement, such as flight. In birds, this issue may be exacerbated by tag movement due to air flow over the body which can cause the device to vibrate more or less depending on attachment (cf. Wilson et al., 2020). It is also germane to consider that the stability of the tag attachment may change over time in longer-term deployments. These issues have long been recognised in the wearable sensors industry for humans (Jayasinghe et al., 2019). Consequently, we cannot, in good faith, compare VeDBA or wingbeat amplitudes of tropicbirds between seasons, although the wingbeat frequency will be unaffected by the attachment procedure, tag position or sensor inaccuracies.

## 5 | CONCLUSIONS

Accelerometer inaccuracies can result in errors in the raw acceleration of up to 5% per axis and, depending on the extent and direction of the errors across all three orthogonal axes, this can affect DBA metrics accordingly. Tag placement can also result in errors in DBA metrics of up to 9.7% in flapping flight for our units, although we note that the scale of the errors varies between device types. Finally, non-standardised tag attachment procedures can result in highly variable dynamic acceleration values. Taken together, these represent a potentially important source of error in both raw acceleration values, which are commonly used to calculate body pitch and roll and/or as parameters to define particular behaviours, and derived metrics such as DBA. Attachment procedures should be adapted to the species tagged, as the effect of different tag placements may vary from one species to the other (e.g. Kölsch et al., 2016; Vandenabeele et al., 2014), and to the study, as different metrics may be measured more reliably using one particular method (Kölsch et al., 2016), making the use of a standardised procedure difficult. Animal disturbance and study purposes should be considered before adjusting tag placement for the compatibility of datasets, and therefore, researchers should be aware of the attachment methods used to compare acceleration metrics between studies reliably (Sequeira et al., 2021). Importantly, we highlight that sensor inaccuracy can be largely mitigated by performing a rapid calibration. There is

therefore a need for researchers to undertake such calibrations prior to each deployment and include this in their archived data as well as to standardise their tag attachment procedure as much as possible. The last decade has been hailed as a golden age in biologging, due to the availability of powerful sensors in animal-attached technologies. The data repositories that archive these data represent extremely valuable resources for the community (e.g. Davidson et al., 2020), but there is an urgent need for calibrations that allow data to be standardised in order for their full potential to be realised now and in the years to come.

## ACKNOWLEDGEMENTS

Special thanks to Jenna Schlener and Charlotte Rees-Roderick for their contribution to the kittiwake and the wind tunnel studies, respectively, as well as to the participants of the walking experiment. We are grateful to the National Parks and Conservation Service, Government of Mauritius, who provided permission to access Round Island to tag red-tailed tropicbirds. This work was funded by the European Research Council starter grant 715874 to ELCS, under the European Union's Horizon 2020 research and innovation program.

## CONFLICT OF INTEREST

We declare we have no competing interests.

## AUTHORS' CONTRIBUTIONS

Red-tailed tropicbird data were collected by A.F., N.C. and V.T.; Human data were collected by K.A.R.R., R.P.W. and R.S.M.; Pigeon data were collected by H.R. and E.L.C.S. under the supervision of M.W.; Black-legged kittiwake data were collected by B.G., F.T., S.W. and K.H.E.; M.D.H. designed the tags used in this study and provided technical information about accelerometers; Data analysis was carried out by R.P.W. and B.G.; Calibrations were designed by R.P.W. and M.D.H.; The manuscript was written by B.G., R.P.W. and E.L.C.S. All authors contributed to the revision of the manuscript, gave final approval for publication and agree to be held accountable for the work performed therein.

## PEER REVIEW

The peer review history for this article is available at <https://publons.com/publon/10.1111/2041-210X.13804>.

## DATA AVAILABILITY STATEMENT

Data and code used for the analyses of this manuscript are available from the Dryad Digital Repository <https://datadryad.org/stash/dataset/doi:10.5061/dryad.f7m0cfxwj> (Garde et al., 2022).

## ORCID

Baptiste Garde  <https://orcid.org/0000-0002-8726-6279>

Rory P. Wilson  <https://orcid.org/0000-0003-3177-0107>

Kayleigh A. R. Rose  <https://orcid.org/0000-0001-7023-2809>

Martin Wikelski  <https://orcid.org/0000-0002-9790-7025>

Shannon Whelan  <https://orcid.org/0000-0003-2862-327X>

Emily L. C. Shepard  <https://orcid.org/0000-0001-7325-6398>

## REFERENCES

- Batista, P., Silvestre, C., Oliveira, P., & Cardeira, B. (2011). Accelerometer calibration and dynamic bias and gravity estimation: Analysis, design, and experimental evaluation. *IEEE Transactions on Control Systems Technology*, 19(5), 1128–1137. <https://doi.org/10.1109/TCST.2010.2076321>
- Baumel, J. J. (1993). Handbook of avian anatomy: *Nomina anatomica avium*. In Publications of the Nuttall Ornithological Club (USA), No. 23.
- Beravs, T., Podobnik, J., & Munih, M. (2012). Three-axial accelerometer calibration using Kalman filter covariance matrix for online estimation of optimal sensor orientation. *IEEE Transactions on Instrumentation and Measurement*, 61(9), 2501–2511.
- Bidder, O. R., Qasem, L. A., & Wilson, R. P. (2012). On higher ground: How well can dynamic body acceleration determine speed in variable terrain? *PLoS ONE*, 7(11), e50556. <https://doi.org/10.1371/journal.pone.0050556>
- Bishop, C. M., Spivey, R. J., Hawkes, L. A., Batbayar, N., Chua, B., Frappell, P. B., Milsom, W. K., Natsagdorj, T., Newman, S. H., Scott, G. R., Takekawa, J. Y., Wikelski, M., & Butler, P. J. (2015). The roller coaster flight strategy of bar-headed geese conserves energy during Himalayan migrations. *Science*, 347(6219), 250–254. <https://doi.org/10.1126/science.1258732>
- Bograd, S., Block, B., Costa, D., & Godley, B. (2010). Biologging technologies: New tools for conservation. Introduction. *Endangered Species Research*, 10, 1–7. <https://doi.org/10.3354/esr00269>
- Cade, D. E., Gough, W. T., Czapanskiy, M. F., Fahlbusch, J. A., Kahane-Rapport, S. R., Linsky, J. M. J., Nichols, R. C., Oestreich, W. K., Wisniewska, D. M., Friedlaender, A. S., & Goldbogen, J. A. (2021). Tools for integrating inertial sensor data with video bio-loggers, including estimation of animal orientation, motion, and position. *Animal Biotelemetry*, 9(1), 1–21.
- Chakravarty, P., Cozzi, G., Ozgul, A., & Aminian, K. (2019). A novel biomechanical approach for animal behaviour recognition using accelerometers. *Methods in Ecology and Evolution*, 10(6), 802–814. <https://doi.org/10.1111/2041-210X.13172>
- Davidson, S. C., Bohrer, G., Gurarie, E., LaPoint, S., Mahoney, P. J., Boelman, N. T., Eitel, J. U. H., Prugh, L. R., Vierling, L. A., Jennewein, J., Grier, E., Couriot, O., Kelly, A. P., Meddens, A. J. H., Oliver, R. Y., Kays, R., Wikelski, M., Aarvak, T., Ackerman, J. T., ... Hebblewhite, M. (2020). Ecological insights from three decades of animal movement tracking across a changing Arctic. *Science*, 370(6517), 712–715. <https://doi.org/10.1126/science.abb7080>
- Duriez, O., Peron, G., Gremillet, D., Sforzi, A., & Monti, F. (2018). Migrating ospreys use thermal uplift over the open sea. *Biology Letters*, 14(12), 20180687. <https://doi.org/10.1098/rsbl.2018.0687>
- Elliott, K. H. (2016). Measurement of flying and diving metabolic rate in wild animals: Review and recommendations. *Comparative Biochemistry and Physiology Part A: Molecular & Integrative Physiology*, 202, 63–77. <https://doi.org/10.1016/j.cbpa.2016.05.025>
- Fehlmann, G., O'Riain, M. J., Hopkins, P. W., O'Sullivan, J., Holton, M. D., Shepard, E. L. C., & King, A. J. (2017). Identification of behaviours from accelerometer data in a wild social primate. *Animal Biotelemetry*, 5(1), 6. <https://doi.org/10.1186/s40317-017-0121-3>
- Field, I. C., Harcourt, R. G., Boehme, L., De Bruyn, P. J. N., Charrassin, J. B., McMahon, C. R., Bester, M. N., Fedak, M. A., & Hindell, M. A. (2011). Refining instrument attachment on phocid seals. *Marine Mammal Science*, 28(3), E325–E332.
- Garde, B., Wilson, R. P., Fell, A., Cole, N., Tatayah, V., Holton, M. D., Wikelski, M., Tremblay, F., Whelan, S., Elliott, K. H., & Shepard, E. L. C. (2022). Data from: Ecological inference using data from accelerometers needs careful protocols. *Dryad Data Repository*, <https://doi.org/10.5061/dryad.f7m0cfxwj>
- Giansanti, D., Macellari, V., Maccioni, G., & Cappozzo, A. (2003). Is it feasible to reconstruct body segment 3-D position and orientation using

- accelerometric data? *IEEE Transactions on Biomedical Engineering*, 50(4), 476–483.
- Gudka, M., Santos, C. D., Dolman, P. M., Abad-Gómez, J. M., & Silva, J. P. (2019). Feeling the heat: Elevated temperature affects male display activity of a lekking grassland bird. *PLoS ONE*, 14(9), e0221999. <https://doi.org/10.1371/journal.pone.0221999>
- Gunner, R. M., Holton, M. D., Scantlebury, M. D., van Schalkwyk, L., English, H. M., Williams, H. J., Börger, L., Redcliffe, J., Yoda, K., Yamamoto, T., Ferreira, S., Govender, D., Viljoen, P., Bruns, A., Bell, S. H., Marks, N., & Wilson, R. P. (2021). *Dead-reckoning animal movements in R—A reappraisal using Gundog*. Tracks.
- Halsey, L. G., Shepard, E. L. C., Quintana, F., Gomez Laich, A., Green, J. A., & Wilson, R. P. (2009). The relationship between oxygen consumption and body acceleration in a range of species. *Comparative Biochemistry and Physiology Part A: Molecular & Integrative Physiology*, 152(2), 197–202. <https://doi.org/10.1016/j.cbpa.2008.09.021>
- Halsey, L. G., Shepard, E. L. C., & Wilson, R. P. (2011). Assessing the development and application of the accelerometry technique for estimating energy expenditure. *Comparative Biochemistry and Physiology - A Molecular and Integrative Physiology*, 158(3), 305–314. <https://doi.org/10.1016/j.cbpa.2010.09.002>
- Harel, R., Spiegel, O., Getz, W. M., & Nathan, R. (2017). Social foraging and individual consistency in following behaviour: Testing the information Centre hypothesis in free-ranging vultures. *Proceedings of the Royal Society B: Biological Sciences*, 284(1852), 20162654. <https://doi.org/10.1098/rspb.2016.2654>
- Hyde, R. A., Ketteringham, L. P., Neild, S. A., & Jones, R. J. S. (2008). Estimation of upper-limb orientation based on accelerometer and gyroscope measurements. *IEEE Transactions on Biomedical Engineering*, 55(2), 746–754. <https://doi.org/10.1109/TBME.2007.912647>
- Jayasinghe, U., Harwin, W. S., & Hwang, F. (2019). Comparing clothing-mounted sensors with wearable sensors for movement analysis and activity classification. *Sensors*, 20(1), 82. <https://doi.org/10.3390/s20010082>
- Kokubun, N., Kim, J.-H., Shin, H.-C., Naito, Y., & Takahashi, A. (2011). Penguin head movement detected using small accelerometers: A proxy of prey encounter rate. *Journal of Experimental Biology*, 214(22), 3760–3767. <https://doi.org/10.1242/jeb.058263>
- Kölzsch, A., Neeffjes, M., Barkway, J., Müskens, G. J. D. M., van Langevelde, F., de Boer, W. F., Prins, H. H. T., Cresswell, B. H., & Nolet, B. A. (2016). Neckband or backpack? Differences in tag design and their effects on GPS/accelerometer tracking results in large waterbirds. *Animal Biotelemetry*, 4(1), 13. <https://doi.org/10.1186/s40317-016-0104-9>
- Kranstauber, B., Cameron, A., Weinzerl, R., Fountain, T., Tilak, S., Wikelski, M., & Kays, R. (2011). The Movebank data model for animal tracking. *Environmental Modelling & Software*, 26(6), 834–835. <https://doi.org/10.1016/j.envsoft.2010.12.005>
- Nathan, R., Spiegel, O., Fortmann-Roe, S., Harel, R., Wikelski, M., & Getz, W. M. (2012). Using tri-axial acceleration data to identify behavioral modes of free-ranging animals: General concepts and tools illustrated for griffon vultures. *Journal of Experimental Biology*, 215(6), 986–996. <https://doi.org/10.1242/jeb.058602>
- Nickel, B. A., Suraci, J. P., Nisi, A. C., & Wilmers, C. C. (2021). Energetics and fear of humans constrain the spatial ecology of pumas. *Proceedings of the National Academy of Sciences of the United States of America*, 118(5), e2004592118. <https://doi.org/10.1073/pnas.2004592118>
- Novák, P. (2010). High resolution constituents of the Earth's gravitational field. *Surveys in Geophysics*, 31(1), 1–21. <https://doi.org/10.1007/s10712-009-9077-z>
- Pagano, A. M., & Williams, T. M. (2019). Estimating the energy expenditure of free-ranging polar bears using tri-axial accelerometers: A validation with doubly labeled water. *Ecology and Evolution*, 9(7), 4210–4219. <https://doi.org/10.1002/ece3.5053>
- Payne, N. L., van der Meulen, D. E., Suthers, I. M., Gray, C. A., & Taylor, M. D. (2015). Foraging intensity of wild mulloway *Argyrosomus japonicus* decreases with increasing anthropogenic disturbance. *Marine Biology*, 162(3), 539–546. <https://doi.org/10.1007/s00227-014-2603-7>
- Qasem, L., Cardew, A., Wilson, A., Griffiths, I., Halsey, L. G., Shepard, E. L. C., Gleiss, A. C., & Wilson, R. (2012). Tri-axial dynamic acceleration as a proxy for animal energy expenditure; should we be summing values or calculating the vector? *PLoS ONE*, 7(2), e31187. <https://doi.org/10.1371/journal.pone.0031187>
- R Core Team. (2020). *R: A language and environment for statistical computing*. Retrieved from <https://www.r-project.org/>
- Ropert-Coudert, Y., Grémillet, D., Ryan, P., Kato, A., Naito, Y., & Le Maho, Y. (2003). Between air and water: The plunge dive of the cape gannet *Morus capensis*. *Ibis*, 146(2), 281–290. <https://doi.org/10.1111/j.1474-919x.2003.00250.x>
- Ruzza, G., Guerriero, L., Revellino, P., & Guadagno, F. M. (2018). Thermal compensation of low-cost MEMS accelerometers for tilt measurements. *Sensors*, 18(8), 2536. <https://doi.org/10.3390/s18082536>
- Sequeira, A. M. M., O'Toole, M., Keates, T. R., McDonnell, L. H., Braun, C. D., Hoenner, X., Jaine, F. R. A., Jonsen, I. D., Newman, P., Pye, J., Bograd, S. J., Hays, G. C., Hazen, E. L., Holland, M., Tsonotos, V. M., Blight, C., Cagnacci, F., Davidson, S. C., Dettki, H., ... Weise, M. (2021). A standardisation framework for bio-logging data to advance ecological research and conservation. *Methods in Ecology and Evolution*, 12(6), 996–1007. <https://doi.org/10.1111/2041-210X.13593>
- Shepard, E., Wilson, R., Quintana, F., Gómez Laich, A., Liebsch, N., Albareda, D., Halsey, L. G., Gleiss, A., Morgan, D. T., Myers, A. E., Newman, C., & McDonald, D. (2008). Identification of animal movement patterns using tri-axial accelerometry. *Endangered Species Research*, 10(1), 47–60. <https://doi.org/10.3354/esr00084>
- Sipos, M., Paces, P., Rohac, J., & Novacek, P. (2011). Analyses of triaxial accelerometer calibration algorithms. *IEEE Sensors Journal*, 12(5), 1157–1165.
- Su, J.-Y., Ting, S.-C., Chang, Y.-H., & Yang, J.-T. (2012). A passerine spreads its tail to facilitate a rapid recovery of its body posture during hovering. *Journal of the Royal Society Interface*, 9(72), 1674–1684. <https://doi.org/10.1098/rsif.2011.0737>
- Tobalske, B. W., & Dial, K. P. (1996). Flight kinematics of black-billed magpies and pigeons over a wide range of speeds. *Journal of Experimental Biology*, 199(2), 263–280.
- Underhill, P. T., & Doyle, P. S. (2006). Alternative spring force law for bead-spring chain models of the worm-like chain. *Journal of Rheology*, 50(4), 513–529. <https://doi.org/10.1122/1.2206713>
- Van Walsum, T. A., Perna, A., Bishop, C. M., Murn, C. P., Collins, P. M., Wilson, R. P., & Halsey, L. G. (2020). Exploring the relationship between flapping behaviour and accelerometer signal during ascending flight, and a new approach to calibration. *Ibis*, 162(1), 13–26. <https://doi.org/10.1111/ibi.12710>
- Vandenabeele, S. P., Grundy, E., Friswell, M. I., Grogan, A., Votier, S. C., & Wilson, R. P. (2014). Excess baggage for birds: Inappropriate placement of tags on gannets changes flight patterns. *PLoS ONE*, 9(3), e92657. <https://doi.org/10.1371/journal.pone.0092657>
- Whelan, S., Hatch, S. A., Benowitz-Fredericks, Z. M., Parenteau, C., Chastel, O., & Elliott, K. H. (2021). The effects of food supply on reproductive hormones and timing of reproduction in an income-breeding seabird. *Hormones and Behavior*, 127, 104874. <https://doi.org/10.1016/j.yhbeh.2020.104874>
- Williams, H. J., Shepard, E. L. C., Duriez, O., & Lambertucci, S. A. (2015). Can accelerometry be used to distinguish between flight types in soaring birds? *Animal Biotelemetry*, 3(1), 1–11. <https://doi.org/10.1186/s40317-015-0077-0>
- Wilson, J. W., Mills, M. G. L., Wilson, R. P., Peters, G., Mills, M. E. J., Speakman, J. R., Durant, S. M., Bennett, N. C., Marks, N. J., & Scantlebury, M. (2013). Cheetahs, *Acinonyx jubatus*, balance turn capacity with pace when chasing prey. *Biology Letters*, 9(5), 20130620. <https://doi.org/10.1098/rsbl.2013.0620>
- Wilson, R. P., Börger, L., Holton, M. D., Scantlebury, D. M., Gómez-Laich, A., Quintana, F., Rosell, F., Graf, P. M., Williams, H., Gunner,

- R., Hopkins, L., Marks, N., Geraldi, N. R., Duarte, C. M., Scott, R., Strano, M. S., Robotka, H., Eizaguirre, C., Fahlman, A., & Shepard, E. L. C. (2020). Estimates for energy expenditure in free-living animals using acceleration proxies: A reappraisal. *Journal of Animal Ecology*, *89*(1), 161–172. <https://doi.org/10.1111/1365-2656.13040>
- Wilson, R. P., Holton, M., Wilson, V. L., Gunner, R., Tysse, B., Wilson, G. I., Quintana, F., Duarte, C., & Scantlebury, D. M. (2019). Towards informed metrics for examining the role of human-induced animal responses in tag studies on wild animals. *Integrative Zoology*, *14*(1), 17–29. <https://doi.org/10.1111/1749-4877.12328>
- Wilson, R. P., Pütz, K., Peters, G., Culik, B., Scolaro, J. A., Charrassin, J.-B., & Ropert-Coudert, Y. (1997). Long-term attachment of transmitting and recording devices to penguins and other seabirds. *Wildlife Society Bulletin*, *25*, 101–106.
- Wilson, R. P., Rose, K. A., Gunner, R., Holton, M. D., Marks, N. J., Bennett, N. C., Bell, S. H., Twining, J. P., Hesketh, J., Duarte, C. M., Bezodis, N., Jezek, M., Painter, P., Silovsky, V., Crofoot, M. C., Harel, R., Arnould, J. P. Y., Allan, B. M., Whisson, D. A., ... Scantlebury, D. M. (2021). Animal lifestyle changes acceptable mass limits for attached tags. *BioRxiv*, 441641. <https://doi.org/10.1101/2021.04.27.441641>
- Wilson, R. P., Shepard, E. L. C., & Liebsch, N. (2008). Prying into the intimate details of animal lives: Use of a daily diary on animals. *Endangered Species Research*, *4*(1–2), 123–137. <https://doi.org/10.3354/esr00064>
- Wilson, R. P., White, C. R., Quintana, F., Halsey, L. G., Liebsch, N., Martin, G. R., & Butler, P. J. (2006). Moving towards acceleration for estimates of activity-specific metabolic rate in free-living animals: The case of the cormorant. *Journal of Animal Ecology*, *75*(5), 1081–1090. <https://doi.org/10.1111/j.1365-2656.2006.01127.x>
- Wilson, R. P., & Wilson, M.-P. T. J. (1989). Tape: A package-attachment technique for penguins. *Wildlife Society Bulletin*, *17*, 77–79.
- Won, S. P., & Golnaraghi, F. (2009). A triaxial accelerometer calibration method using a mathematical model. *IEEE Transactions on Instrumentation and Measurement*, *59*(8), 2144–2153.
- Yin, Y., Fang, Z., Liu, Y., & Han, F. (2019). Temperature-insensitive structure design of micromachined resonant accelerometers. *Sensors*, *19*(7), 1544.
- Yoda, K. (2019). Advances in bio-logging techniques and their application to study navigation in wild seabirds. *Advanced Robotics*, *33*(3–4), 108–117. <https://doi.org/10.1080/01691864.2018.1553686>
- Yoda, K., Sato, K., Niizuma, Y., Kurita, M., Bost, C., Le Maho, Y., & Naito, Y. (1999). Precise monitoring of porpoising behaviour of Adelie penguins determined using acceleration data loggers. *Journal of Experimental Biology*, *202*(22), 3121–3126. <https://doi.org/10.1242/jeb.202.22.3121>
- Yorzinski, J. L., Chisholm, S., Byerley, S. D., Coy, J. R., Aziz, A., Wolf, J. A., & Gnerlich, A. C. (2015). Artificial light pollution increases nocturnal vigilance in peahens. *PeerJ*, *3*, e1174. <https://doi.org/10.7717/peerj.1174>

## SUPPORTING INFORMATION

Additional supporting information may be found in the online version of the article at the publisher's website.

**How to cite this article:** Garde, B., Wilson, R. P., Fell, A., Cole, N., Tatayah, V., Holton, M. D., Rose, K. A., Metcalfe, R. S., Robotka, H., Wikelski, M., Tremblay, F., Whelan, S., Elliott, K. H. & Shepard, E. L. (2022). Ecological inference using data from accelerometers needs careful protocols. *Methods in Ecology and Evolution*, 00, 1–13. <https://doi.org/10.1111/2041-210X.13804>