



Swansea University  
Prifysgol Abertawe



## Cronfa - Swansea University Open Access Repository

---

This is an author produced version of a paper published in:

*The Cryosphere*

Cronfa URL for this paper:

<http://cronfa.swan.ac.uk/Record/cronfa51893>

---

### **Paper:**

Bevan, S., Luckman, A., Benn, D., Cowton, T. & Todd, J. (2019). Impact of warming shelf waters on ice mélange and terminus retreat at a large SE Greenland glacier. *The Cryosphere*, 13(9), 2303-2315.

<http://dx.doi.org/10.5194/tc-13-2303-2019>

---

This item is brought to you by Swansea University. Any person downloading material is agreeing to abide by the terms of the repository licence. Copies of full text items may be used or reproduced in any format or medium, without prior permission for personal research or study, educational or non-commercial purposes only. The copyright for any work remains with the original author unless otherwise specified. The full-text must not be sold in any format or medium without the formal permission of the copyright holder.

Permission for multiple reproductions should be obtained from the original author.

Authors are personally responsible for adhering to copyright and publisher restrictions when uploading content to the repository.

<http://www.swansea.ac.uk/library/researchsupport/ris-support/>



# Impact of warming shelf waters on ice mélange and terminus retreat at a large SE Greenland glacier

Suzanne L. Bevan<sup>1</sup>, Adrian J. Luckman<sup>1</sup>, Douglas I. Benn<sup>2</sup>, Tom Cowton<sup>2</sup>, and Joe Todd<sup>2</sup>

<sup>1</sup>Swansea University, Singleton Park, Swansea SA2 8PP, UK

<sup>2</sup>University of St Andrews, College Gate, St Andrews KY16 9AJ, UK

**Correspondence:** Suzanne L. Bevan (s.l.bevan@swansea.ac.uk)

Received: 27 November 2018 – Discussion started: 2 January 2019

Revised: 24 July 2019 – Accepted: 29 July 2019 – Published: 5 September 2019

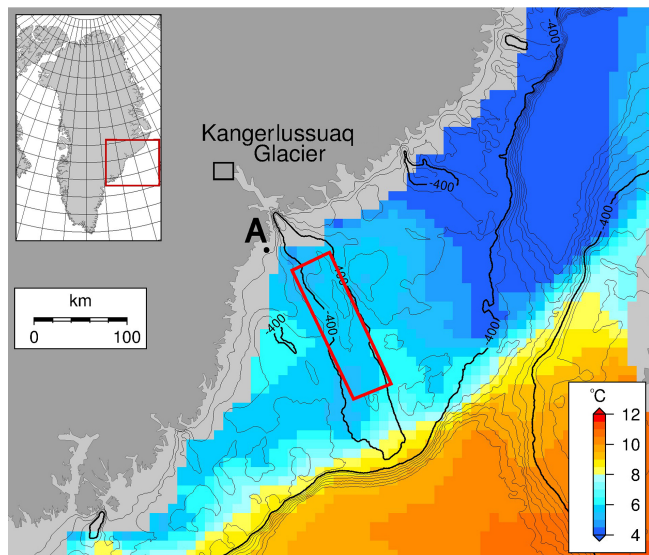
**Abstract.** By the end of 2018 Kangerlussuaq Glacier in southeast Greenland had retreated further inland than at any time in the past 80 years and its terminus was approaching a region of retrograde bed slope from where further rapid retreat would have been inevitable. Here we show that the retreat occurred because the glacier failed to advance during the winters of 2016/17 and 2017/18 owing to a weakened proglacial mélange. This mixture of sea ice and icebergs is normally rigid enough to inhibit calving in winter, but for 2 consecutive years it repeatedly collapsed, allowing Kangerlussuaq Glacier to continue to calve all year round. The mélange break-ups followed the establishment of anomalously warm surface water on the continental shelf during 2016, which likely penetrated the fjord. As calving continued uninterrupted from summer 2016 to the end of 2018 the glacier accelerated by 35 % and thinned by 35 m. These observations demonstrate the importance of near-surface ocean temperatures in tidewater glacier stability and show that it is not only deep-ocean warming that can lead to glacier retreat. During winter 2019 a persistent mélange reformed and the glacier readvanced by 3.5 km.

runoff (van den Broeke et al., 2016). Kangerlussuaq Glacier (KG) is a large tidewater-terminating glacier in southeast Greenland (Fig. 1), which delivers around 24 Gt yr<sup>-1</sup> of ice to the ocean, equivalent to about 5 % of GrIS total discharge (Enderlin et al., 2014). In 2005 the calving front of KG rapidly retreated by over 6 km, its surface flow speeds doubled (Howat et al., 2005; Luckman et al., 2006), and between 2003 and 2007 the glacier thinned by over 100 m (Khan et al., 2014). The rapid retreat of KG was accompanied by a similar pattern of change in many other southeast Greenland outlet glaciers and accounted for ~ 16 % of the total 2000–2005 net mass loss of the GrIS (Rignot and Kanagaratnam, 2006). KG thus typifies the response of Greenland outlet glaciers to climate forcing whilst being an individually important source of sea level rise. After 2006, KG slowed down, although speeds remained at least 20 % greater than pre-retreat values, and the ice front maintained a steady mean annual position, with seasonal advances and retreats of up to 6 km (Kehrl et al., 2017).

The synchronous retreat of southeast Greenland glaciers in the early 2000s suggested that atmospheric and/or ocean warming were responsible for initiating the rapid retreat, thinning and subsequent dynamic response (Howat et al., 2008; Hanna et al., 2009; Murray et al., 2010; Howat and Eddy, 2011; Christoffersen et al., 2011; Inall et al., 2014). Nevertheless, local differences in glacier and fjord geometry and connection to the ocean normally determine individual responses to changing environmental conditions (Moon et al., 2012; Enderlin et al., 2013; Millan et al., 2018). When KG retreated in 2005 it did so into deeper water (Khan et al., 2014) – such a reverse or retrograde bed slope can set up a positive feedback between frontal retreat, ice discharge and

## 1 Introduction

Since the early 1990s the Greenland Ice Sheet (GrIS) has been a major contributor to sea level rise, losing a total of 2700±930 Gt of ice between 1992 and 2011 (Shepherd et al., 2012). About 40 % of the 0.47±0.23 mm yr<sup>-1</sup> mean 1991–2015 sea level rise originating from Greenland was caused by increases in the rate at which glaciers calve ice into the oceans and the remainder by increases in surface melt and



**Figure 1.** Southeast Greenland with reanalysis 5 m ocean temperatures for July 2016. The bathymetric contours are every 100 m and are based on the International Bathymetric Chart of the Arctic Ocean Version 3 (Jakobsson et al., 2012). The small black box shows the Kangerlussuaq Glacier area covered by Fig. 6. The red box shows the area over which ocean temperatures were averaged for Figs. 2 and 3. Aputiteeq weather station is marked by the letter A.

dynamic thinning (Schoof, 2007). KG's summer maximum advance position continued to retreat up-fjord gradually until mid-2011 when its grounding line once again reached shallower water and the glacier began to slow down (Kehrl et al., 2017). At that stage thinning had also slowed and the final few kilometres of the glacier were afloat (Khan et al., 2014; Kehrl et al., 2017).

KG calves into the head of a 75 km long, 5–10 km wide fjord (Murray et al., 2010; Sutherland et al., 2014) (KF); the fjord has a wide mouth and is connected to the shelf break by a deep, straight, 300 km long trough (Dowdeswell et al., 2010; Inall et al., 2014). Much of the passage from ocean to glacier is 600–900 m deep with sills shallowing to 400–550 m at the fjord mouth and within the shelf trough (Fig. 1). The increase in mass loss from the southeast GrIS to the ocean that began in the mid-1990s coincided with a warming of the North Atlantic Ocean (Straneo and Heimbach, 2013) and the relatively unimpeded connection of KG with the ocean was considered to have allowed increasing ocean temperatures to trigger retreat in 2005 (Christoffersen et al., 2011; Inall et al., 2014; Jackson et al., 2014; Millan et al., 2018).

More recently, following two winters when KG unusually failed to advance, its calving front by the end of 2018 was further retreated than at any point during the observational record (i.e. since 1932; Brough et al., 2019). We present evidence that the recent retreat was triggered by a weakening

of ice mélange in the fjord, a mechanism only previously shown by association (Moon et al., 2015). We propose that the mélange weakening is explained by exceptionally warm surface waters originating from outside the fjord. The observed contemporaneous interannual thinning superimposed on the seasonal cycle of surface elevation change will leave the glacier vulnerable to basal melt and further rapid retreat.

## 2 Methodology and data

We use time series of satellite imagery, feature tracking of synthetic-aperture radar (SAR) and optical data, interferometric digital elevation models (DEMs), and ocean and air temperatures to place the recent retreat in the context of the multidecadal satellite record and to explain the cause of this retreat.

### 2.1 Frontal positions

We manually digitized glacier fronts on a variety of optical and synthetic aperture radar (SAR) satellite images. We located the intersection points of the digitized fronts with a series of parallel linear flow lines at 160 m spacing, and the frontal change was calculated by taking the mean of the changes in these intersection points (Luckman et al., 2015). From 1985 to 2012 the images include Landsat 5 (TM Band 4) and Landsat 7 (ETM+ Band 8), European Remote Sensing satellites (ERS-1 and ERS-2), and Envisat Advanced Synthetic Aperture Radar (ASAR) Image Mode (IM) and Wideswath Mode (WSM) data (Bevan et al., 2012). From 2011 to 2018 we use TerraSAR-X SAR data, and additionally, from 2015 to 2019, Sentinel 1A and 1B Ground Range Detected High-resolution Interferometric Wideswath (GRDH, IW) images. Image spatial resolution ranges from 30 m for Landsat 5 to 8 m for the multi-looked TerraSAR-X data. All images were reprojected to the polar stereographic co-ordinate system before the fronts were digitized. Appendix Fig. A1 shows the observations derived from different satellite missions.

### 2.2 Surface velocities

We used feature tracking to derive surface velocities – see Bevan et al. (2012) for details of the early (1985–2012) part of the time series. After 2011 velocities are based on TerraSAR-X SAR and Sentinel 1A and 1B single-look complex (SLC) data using GAMMA Remote Sensing software. Pairs of TerraSAR-X SLCs with 11 d time separation were tracked using a window spacing of 40 m and the results converted to ground range and geocoded using coincident interferometric DEMs (Sect. 2.5). Sentinel-1 pairs were tracked with pair delays of either 6 or 12 d, with a window spacing of 100 m and geocoded using the 90 m Greenland Ice sheet Mapping Project (GIMP) DEM (Howat et al., 2014). As for

frontal positions, Appendix Fig. A1 shows the velocity observations derived from different satellite missions.

### 2.3 Ice mélange

Similarly to Kehrl et al. (2017), we produce a metric for the existence of rigid ice mélange based on the ability of feature tracking to capture velocities in the region immediately in front of the glacier terminus. If a visual inspection of mapped velocity magnitude shows a realistic, coherent and uniform velocity field extending across the width of the fjord and for at least 5 km downstream of the glacier front, we determine there to be rigid mélange present. In summer, when the glacier is calving, it is very rare for feature tracking to capture realistic surface velocities in the fjord, indicating that rigid mélange does not persist between consecutive images. This method is an improvement on Kehrl et al. (2017) in that it assimilates information from the whole fjord rather than sampling the coherence at a single point. Note that the feature-tracking algorithm looks for a two-dimensional translation of features over the time period between successive images (11 d for TerraSAR-X, 6 or 12 d for Sentinel 1) meaning that the mélange must last at least this long to be tracked.

### 2.4 Ocean and surface air temperatures

We extracted ocean potential temperatures for 1991–2017 from Arctic Ocean Physics Reanalysis monthly mean data supplied by the Copernicus Marine Environment Monitoring Service (CMEMS). Temperatures for 2018 and into 2019 were then based on monthly means of the Arctic Ocean Analysis and Forecast Product (also supplied by CMEMS), which are available daily. Both the reanalysis and the analysis/forecast products are based on a 3-D physical ocean and sea ice model that assimilates remotely sensed and in situ data, and have a spatial resolution of 12.5 km and 12 depth levels distributed unevenly between 5 and 3000 m. The data do not extend into KF but we calculated the mean, standard deviation and monthly anomalies of the 5 and 200 m potential temperatures over the Kangerlussuaq trough area (Fig. 1) for the full time series. The 5 m data were chosen to sample Polar Surface Water (PSW) and the 200 m data to sample the upper layers of Atlantic Water (AW) (Sutherland et al., 2014). Within the fjord we rely on published conductivity–temperature–depth (CTD), for context.

We downloaded 2 m air temperatures from the Danish Meteorological Institute weather reports for Aputiteeq (station number 04351) at the entrance to KF (see Fig. 1). Anomalies in monthly mean 12:00 UTC temperatures were calculated relative to the period 1987–2018, 1987 being the first year for observations at 04351.

### 2.5 Surface elevation

We derived a time series of 150 DEMs from June 2011 to July 2018 using experimental SAR data from the TanDEM-

X satellite system, which comprises the TerraSAR-X and TerraSAR-X add-on for Digital Elevation Measurement (TanDEM-X) satellites. We used GAMMA Remote Sensing software to interfere, unwrap and geocode the bistatic strip map mode Co-registered Single look Slant range Complex (CoSSC) images. The CoSSC images have a spatial resolution of  $\sim 2$  m and the DEMs were smoothed to a horizontal resolution of 8 m. We used the provided orbital vector data and the 30 m GIMP DEM (Howat et al., 2014) to initially geolocate and phase scale the images; geolocation was iteratively improved using the interferometrically generated DEMs. The interferograms were unwrapped from a barrock location on the south side of the glacier ( $33.0365^\circ$  W,  $68.5939^\circ$  N), and the DEMs were vertically tied to this point using the GIMP DEM height (730 m). Only CoSSC images with satellite separations perpendicular to the look direction of less than 500 m were used because longer baselines prevented satisfactory unwrapping. This restriction meant that there were fewer DEMs created for 2015. Elevations are given relative to the WGS84 reference ellipsoid. Orbit uncertainties (Krieger et al., 2013) mean that we cannot expect relative elevation accuracies better than 2 m. The standard deviation of DEM heights at a point on the opposite side of the fjord to the unwrapping start point was 2.3 m, indicating that unwrapping errors were minimized even across the glacier. The accuracy of absolute height values depends on the accuracy of, and geolocation with respect to, the GIMP DEM. The GIMP DEM in turn is quoted as having a vertical precision of between  $\pm 1.0$  m over most ice areas and  $\pm 30$  m over areas of high relief (Howat et al., 2014). We therefore estimate absolute errors of the order of  $\pm 10$  m, which is the root-mean-squared validation error of the GIMP DEM with respect to ICESat.

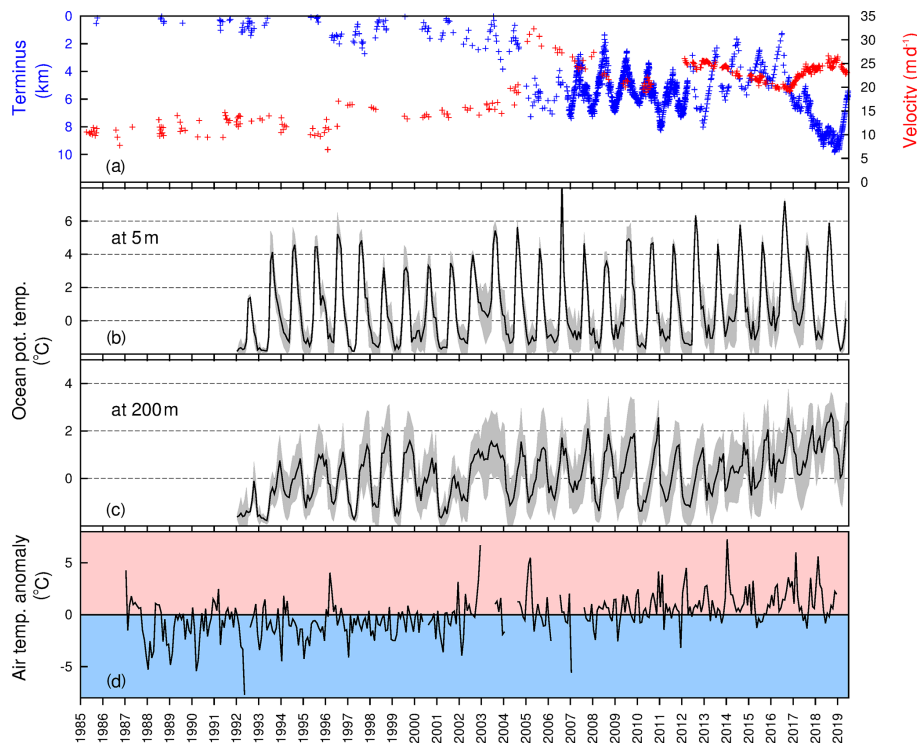
For the bed we used IceBridge BedMachine Greenland, version 3 data (Morlighem et al., 2017) together with the hydrostatic equilibrium assumption to determine where the glacier surface was above flotation height. We used an ice density of  $917 \text{ kg m}^{-3}$  and a seawater density of  $1023 \text{ kg m}^{-3}$ . At the location of KG, the WGS84 datum is 55 m below the geoid.

## 3 Results

### 3.1 Ice front position

Our long and detailed record of ice front position shows that prior to the 2005 retreat and from 2005 to the end of 2016, KG maintained a relatively stable mean-annual frontal position (Fig. 2). The clear seasonal variation in ice front position is characterized by an advance of between 2 and 6 km from January until July or August (which we will refer to simply as winter), with almost no calving events. During the second half of the year (summer) the front normally retreats in a steady manner.





**Figure 2.** Time series of (a) Kangerlussuaq Glacier front position and surface velocity. The y-axis distance scale for the front position matches the profile drawn in Fig. 6. Front positions and velocities are based on a variety of satellite images and the velocities were measured at the star marked in Fig. 4. Appendix Fig. A1 indicates which instruments contributed which observations. (b) Kangerlussuaq trough monthly ocean potential temperature at 5 m averaged over the red box shown in Fig. 1. The grey shade shows  $\pm 1$  standard deviation around the mean. (c) As for (b), but at 200 m. (d) Anomalies in monthly mean 12 UTC air temperature at Aputiteeq.

By contrast, in 2017 and 2018, the glacier continued to calve throughout both summer and winter, only advancing a fraction of the normal distance between the beginning of January and the end of July in 2017, and not at all in 2018 (Fig. 3a). This lack of sustained winter advance has only occurred twice before in the observed record: 1996 and 2005, which marked the previous episode of retreat and thinning (Fig. 2, Luckman et al., 2006). May 2011 also featured an unusually early period of calving. By the start of summer 2018 the ice front had retreated by 8 km relative to the start of summer 2016 and the anomalous winter calving continued into the summer months. In 2019, after two calving events in January, the ice front continued to advance as normal for this time of year. By the end of May 2019 the ice front was 3.3 km upstream of its position at the start of summer 2016.

### 3.2 Surface velocities

The increasingly high-temporal-resolution record of surface velocities shows that the peak in 2005 remains a record for Kangerlussuaq but that velocities coincident with the more recent retreat were as high as they have ever been since 2005. At the start of 2017, when the normal winter advance faltered, velocities increased and the acceleration was sustained through to summer 2018, by which time KG was flowing

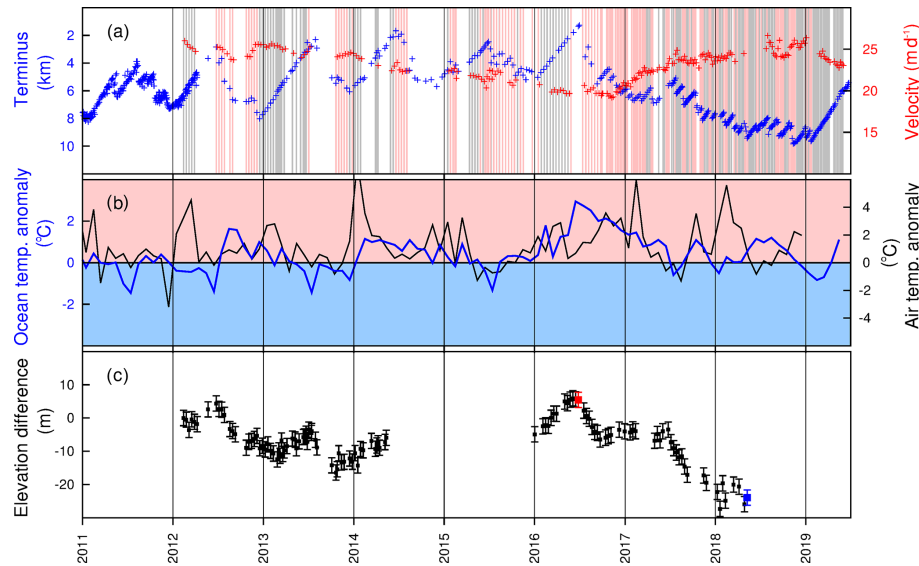
35 % faster than 2 years earlier (Fig. 3a). In 2019 as KG readvanced surface velocities slowed. Both secular and seasonal retreats (such as 1996) and individual calving events result in glacier acceleration.

### 3.3 Integrity of proglacial mélange

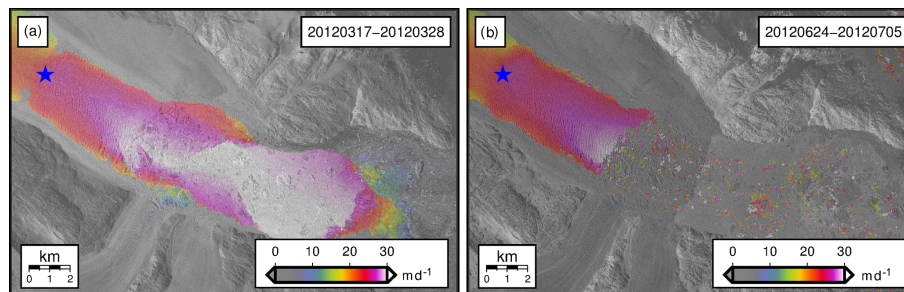
We assessed 254 TerraSAR-X and Sentinel 1 velocity maps between 13 February 2012 and 30 May 2019 for evidence of rigid proglacial mélange (see, e.g. Fig. 4). It is evident (Fig. 3a) that in 2012, 2013, 2016 and 2019 glacier advance coincided with sustained periods of rigid mélange. In winters 2017 and 2018, when the glacier continued to calve, a rigid mélange was not maintained for more than 1 month in either year.

#### 3.3.1 Air and ocean temperatures

Air temperatures were anomalously warm throughout 2016 relative to the 1987–2018 mean, most notably between September 2016 and February 2017 (Fig. 3b). Similarly, exceptionally mild air temperatures were recorded between December and April of the following winter. Earlier in the record (Fig. 2d) temperatures were significantly above the



**Figure 3.** Time series plots. **(a)** Front position and surface velocity (note the change in front position and velocity scales compared with Fig. 2a). The vertical bars mark dates when the feature-tracking metric indicated the presence (grey) or absence (pink) of a rigid mélange. **(b)** The 2 m air temperature anomaly for Aputiteeq and Kangerlussuaq trough ocean potential temperature anomaly at 5 m depth averaged over the red box shown in Fig. 1 (blue). **(c)** Cross-glacier mean surface elevation difference taken from the TanDEM-X DEMs; the error bars represent the relative accuracy of  $\pm 2.3$  m. The elevations are an average across the transect marked in Fig. 6, and the differences are relative to the first DEM. The red and blue points mark the DEMs used for the surface elevation profiles plotted in Fig. 7.



**Figure 4.** Feature-tracked surface velocities based on TerraSAR-X data to demonstrate discrimination between **(a)** rigid and **(b)** non-rigid mélange. The blue star marks the extraction point for the velocities presented in Figs. 2 and 3.

1987–2018 mean in December 2002 ( $+6.7$  °C), March 2005 ( $+5.5$  °C) and January 2014 ( $+7.3$  °C).

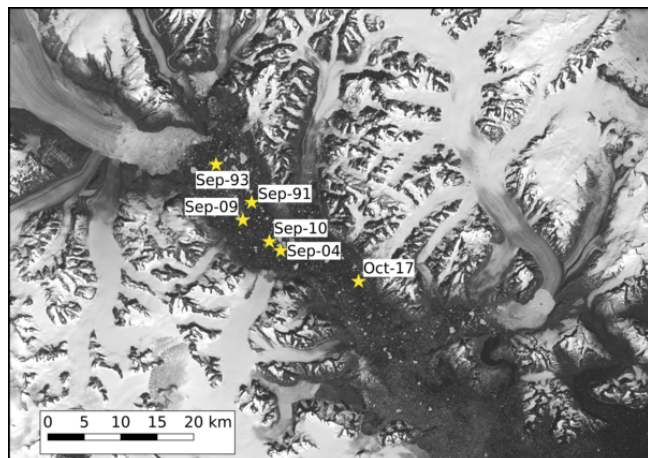
Surface waters on the southeast Greenland continental shelf were also exceptionally warm in 2016: by July and August 2016 potential temperatures at a depth of 5 m were up to 4 °C warmer than the 1992–2018 mean (Appendix, Fig. A2) and the anomalies persisted over winter and into the first half of 2017 (Figs. 2b and 3b). Also of note is the anomalously warm water at 5 and 200 m in the winter of 2002/2003. Since 2012 winter temperatures at 200 m have been steadily increasing (Fig. 2c).

CTD data (Fig. 5) provide in-fjord temperature data for autumns of 1991, 1993, 2004, 2009, 2010 and 2017 from the surface down to depths of 400–700 m. The profiles show relatively warm water at depth in September 2010, which is reflected in the re-analysis data at 200 m (Fig. 2c). However,

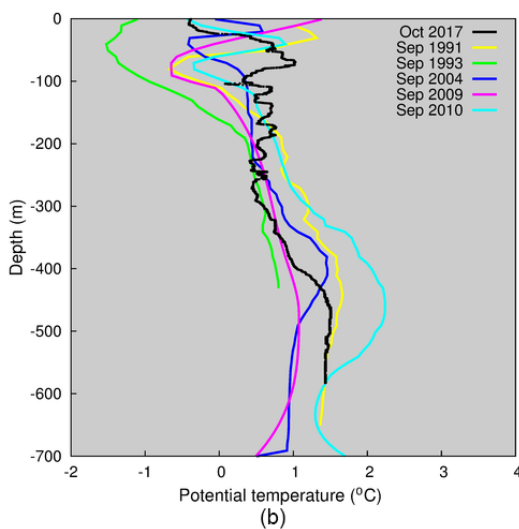
whilst the October 2017 profile shows warm temperatures in the upper 100 m, the waters at depth are not as notably warm as the re-analysis data show out on the shelf.

### 3.4 Surface elevation and evolution of a floating tongue

Associated with the seasonal velocity pattern is a seasonal dynamic change in KG surface elevations – the glacier thins as it retreats and accelerates, and thickens as it advances and slows (Fig. 3a and c). During the recent period of acceleration (June 2016 to May 2018) a cross-glacier mean thinning of 35 m is superimposed on the seasonal thinning. Surface elevations relative to sea level and an assumption of hydrostatic equilibrium indicate that in summer 2016 the final 5 km of the glacier was floating (Fig. 7); the velocity profile for 4 June 2014 (when the glacier thickness and front location



(a)



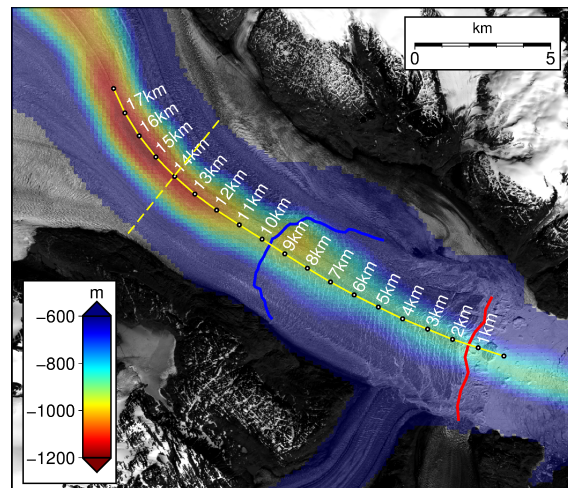
(b)

**Figure 5.** (a) Location map (background Landsat Image 18 June 2016) and (b) temperature profiles from published conductivity–temperature–depth (CTD) data. September 1991 (Station K9, Andrews et al., 1994); September 1993 (Station KF3, Azetsu-Scott and Syvitski, 1999); September 2004 (Dowdeswell, 2004); September 2009 (Straneo et al., 2012); September 2010 (Inall et al., 2014); October 2017 (OMG Mission, 2016).

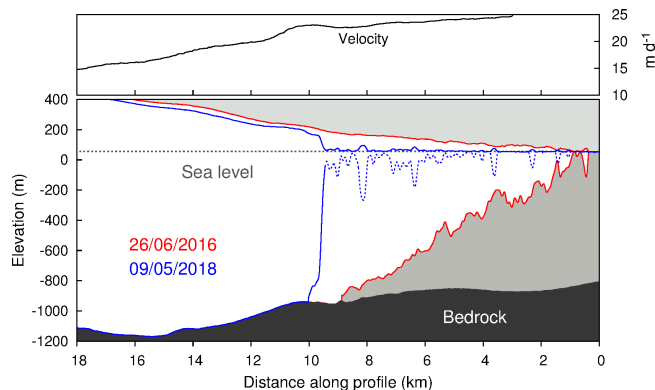
were similar to summer 2016) confirms this. The reduction in down-flow acceleration between kilometres 11 and 4 is consistent with transition to a floating tongue and loss of basal drag. By May 2018 (the last available DEM) most of this floating tongue had been lost and the ice front was left only 1 km seaward of the start of a section of reverse bed slope (Figs. 6 and 7).

#### 4 Discussion

Based on the success or otherwise of the feature-tracking method to capture velocities over the region immediately in front of KG's terminus, we have confirmed that any win-



**Figure 6.** Glacier bed mapped using IceBridge BedMachine Greenland, Version 3 (Morlighem et al., 2017). The yellow profile and red and blue front positions relate to those drawn in Fig. 7. The dashed yellow transect indicates the line along which surface elevations were averaged for Fig. 3c.



**Figure 7.** Surface elevations along the profile marked in Fig. 6 for advanced (red) and retreated (blue) front positions, corresponding to the red and blue points plotted in Fig. 3c. Bed (IceBridge BedMachine Greenland, Version 3 data, Morlighem et al., 2017) and surface velocities (based on TerraSAR-X data from 29 May 2014 to 9 June 2014) are along the same profile.

ter advance coincides with the formation of a rigid mélangé (Fig. 3a). Although interstitial sea ice likely contributes little to mélangé strength, it prevents iceberg dispersal and thus encourages the transfer of back stress from the fjord sides to the glacier front via compressional stress bridges between adjacent icebergs (Burton et al., 2018). Back stress from mélangé is clearly insufficient to resist advance of the glacier front, but it inhibits calving by reducing crevasse propagation and preventing the detachment of icebergs, even where the ice is heavily fractured (Cassotto et al., 2015; Fried et al., 2018). It has been demonstrated theoretically that the amount of back stress necessary to prevent calving is of the order

of  $10^7 \text{ N m}^{-1}$  and that this can be readily supplied by ice mélange (Amundson et al., 2010; Krug et al., 2015).

At KG the mélange inhibits detachment of icebergs from the glacier front until sea ice melts and the mélange disperses with the onset of summer – resulting in the seasonal advance–retreat cycle. The magnitude of this cycle can be explained by modelling studies that have shown that the inhibiting effect of ice mélange on calving is capable of generating much larger (kilometre scale) seasonal advance and retreat cycles than the annual variation in submarine frontal melt (Todd and Christoffersen, 2014; Krug et al., 2015; Todd et al., 2018).

In contrast to previous years, in early 2017 and 2018, formation of a rigid mélange was repeatedly interrupted by episodes of break-up and dispersal. Close examination of a series of synthetic aperture radar (SAR) images from Sentinel 1 reveals that each mélange break-up episode commenced at the down-fjord edge and propagated towards the glacier front, culminating in large calving events (Fig. 8, and Video 1). In consequence, the normal sustained advance during winter was punctuated by several periods of calving. This behaviour is similar to that usually experienced during the last 6 months of each year, when rigid mélange repeatedly forms and breaks up. The failure of KG to advance in the winters of 2017 and 2018 thus reflects weakly bonded mélange and indicates that conditions in the fjord were not conducive to the formation of mélange at this time. The overarching cause of retreat may therefore lie in a warming of air temperatures, ocean temperatures or a combination of these effects.

Mild air temperatures, particularly during the winter months, could contribute to the weakening of ice mélange by delaying or limiting sea ice formation. The anomalously warm winter air temperatures of 2016 and 2017 suggest that atmospheric warming played a role in driving recent retreat at KG. Similarly, air temperatures in early 1996 and 2005, both years when there was a lack of winter advance, were very warm. However, the warm air temperatures in 2014 had no apparent impact on the winter advance of KG that year. It may therefore be that warm winter air temperatures alone are not necessarily sufficient to inhibit mélange formation without concurrent favourable ocean or atmospheric circulation patterns.

The warming of shelf waters in July and August 2016 in part reflects the high regional air temperatures during this time, but was also driven by an increased advection of water from the Atlantic Ocean (Timmermans, 2016). If these exceptionally warm surface waters were able to propagate into the fjord, then they may have contributed significantly towards the weakened ice mélange at KG during winter 2016/17. Although there is no record of water properties within KF in 2016, observations from previous years (Inall et al., 2014; Sutherland et al., 2014) and numerical modelling experiments (Cowton et al., 2016), indicate that seasonally warmed shelf surface waters (termed Polar Surface

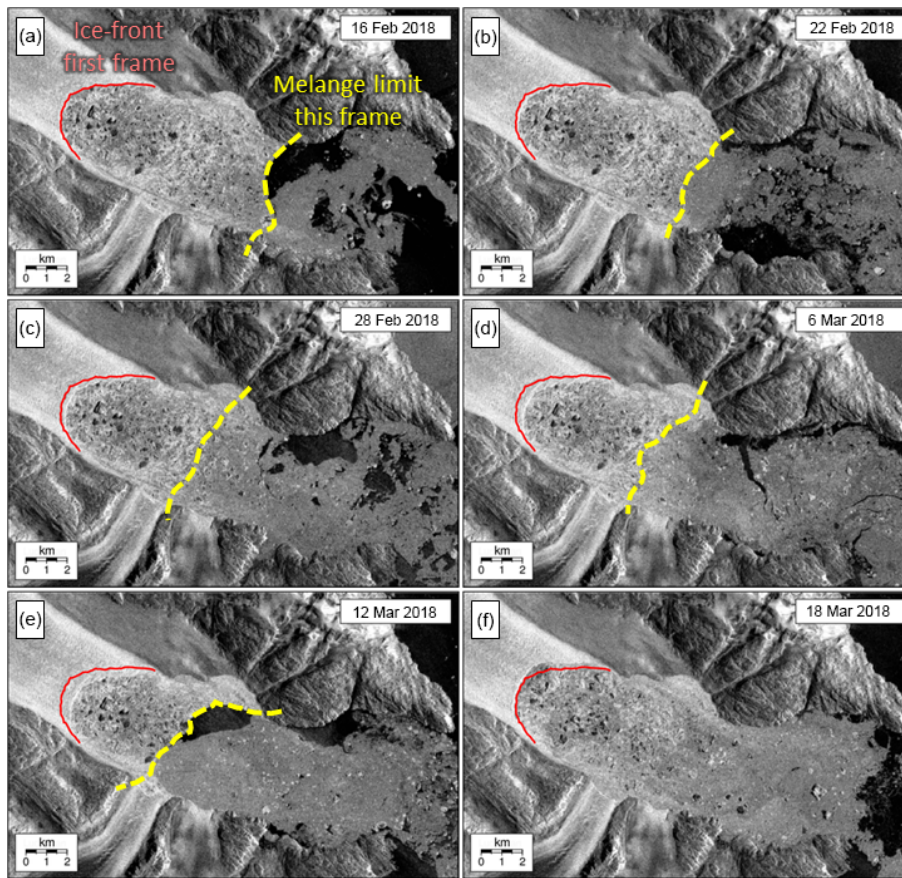
Water warm, PSWw) can readily penetrate far into KF. These studies reveal the prevalence of a complex, multilayered circulation in KF during the summer melt season. Turbulent upwelling, forced by the input of meltwater at the glacier termini (and in particular KG), creates an outflowing tongue of relatively cool glacially modified waters (GMWs) at a depth of  $\sim 100$  m, with a compensatory up-fjord flow of warm, salty AW below this. Above the GMW, circulation is characterized by a secondary cell in which PSWw is drawn towards the fjord head, capped by a thin ( $\sim 10$  m) layer of outflowing cool, fresh water. Numerical modelling (Cowton et al., 2016) and analysis of these waters in temperature–salinity space (Inall et al., 2014) indicate that this surface outflow is forced by the input of freshwater from surface runoff and shallow tidewater glaciers. The upper cell therefore resembles a classic estuarine circulation, with the up-fjord flow of PSWw driven by turbulent mixing at the interface between these overlying layers.

Observations show that PSWw may constitute the warmest water mass in KF during the summer months (Inall et al., 2014). Although it experiences cooling through mixing and iceberg melt during up-fjord transit, available hydrographic data from the inner fjord demonstrate it remains relatively warm ( $\sim 0.5$ – $1.5$  °C) even at this distance from the shelf (Fig. 5). Thus, while considerable attention has been given to AW as a driver of submarine melting (Straneo and Heimbach, 2013), PSWw represents an important yet comparatively overlooked component of the fjord heat budget. Inall et al. (2014) calculated that PSWw accounts for 25 % of ice melt within the fjord system, reflecting its warmth and proximity to floating ice within the fjord. Indeed, its location near the fjord surface means that it could inhibit mélange formation. We therefore propose that exceptionally warm PSWw played an important role in the weakening of the ice mélange, and thus onset of retreat, at KG in 2016/17.

In addition to the anomalously warm shelf surface waters, it is possible that a warming of subsurface AW may have contributed to the retreat of KG. These subsurface waters, unhindered by the relatively deep sills, are advected into KF by both the buoyancy-driven circulation described above and coastally trapped waves associated with winter storms (Jackson et al., 2014; Cowton et al., 2016; Fraser and Inall, 2018). The retreat of KG and other Greenlandic tidewater glaciers has been associated with a warming of coastal AW (Straneo and Heimbach, 2013; Cowton et al., 2018), although the difficulty of observing frontal processes at tidewater glaciers means that evidence of causation remains elusive.

While warming AW may have helped precondition KG for retreat, there are several reasons why we believe it is unlikely to have been the principal cause of the retreat commencing in 2016. Firstly, the onset of retreat in winter, and observations of reduced mélange rigidity immediately prior to calving, indicate that the retreat was triggered by a weakening of the mélange, most likely due to reduced sea ice formation. While the subsurface input of meltwater at KG drives vigorous up-





**Figure 8.** Sequence of Sentinel-1 SAR images of the Kangerlussuaq ice front and fjord showing how the ice advances when mélangé inhibits calving (panels a to e), then retreats again by calving because of loss or weakening of the mélangé. The red line in each panel marks the ice front position at the start of the sequence, and the yellow line marks the approximate extent of coherent mélangé at each step. This behaviour is commonly seen in summer, but has recently also occurred in winter, leading to ongoing glacier retreat.

welling of AW, observations and modelling indicate that this reaches neutral buoyancy and flows out of the fjord at depths greater than  $\sim 50$  m (Inall et al., 2014; Cowton et al., 2016). At these depths it may contribute to melting of larger icebergs in the mélangé, but is less well placed to impact on sea ice formation at the fjord surface, and hence mélangé rigidity. Secondly, while reanalysis data indicate that AW in Kangerlussuaq trough has warmed in recent years, this warming has been relatively gradual, with no obvious trigger for retreat in 2016/17. This contrasts with surface waters, which experienced exceptionally high temperatures in 2016. Thirdly, a hydrographic profile obtained from KF during autumn 2017 does not show particularly warm AW in the fjord at this time (Fig. 5). This implies that the apparent warming of trough waters may to some extent be an artefact of the reanalysis data, or may not be effectively translated into an actual warming of AW in KF, especially in the autumn when buoyancy-driven circulation is weaker.

We therefore propose that the exceptionally warm surface waters on the east Greenland shelf during 2016 and early 2017, and consequently the presence of anomalously

warm PSWw within KF, played a critical role in triggering the recent retreat of KG. Combined with mild air temperatures, we suggest these warm, near-surface waters will have acted to delay and weaken winter sea ice formation, reducing mélangé rigidity and thus allowing increased winter calving of KG. The possibility that anomalously warm PSWw could be responsible for episodes of retreat at KG has been previously hypothesized; Christoffersen et al. (2011) noted that CTD data from inner KF showed PSWw at  $> 2^{\circ}\text{C}$  shortly prior to the major retreat of 2005, compared with  $< -1^{\circ}\text{C}$  during a previous survey during the stable year of 1993, and observed a corresponding break-up of mélangé in satellite imagery. Christoffersen et al. (2012) presented evidence that warm air temperatures in early 2005 (see also Fig. 2d) together with strong katabatic winds contributed to the reduction in the mélangé in front of KG. According to Christoffersen et al. the katabatic winds act to drive the sea ice away from the glacier front and were weaker in 2002/03 when KG did not retreat in spite of warm air and shelf ocean temperatures (Fig. 2). The lack of winter advance in 1996 was accom-

panied by above-average shelf ocean temperatures as well as above-average air temperatures.

Warm air temperatures may then help to explain the continued retreat during 2017/18 even when shelf surface waters were not observed to be anomalously warm although the CTD data for October 2017 show warm water in the fjord in the upper 100 m. Air temperatures in early 2018 were almost 6° above average and the mélange broke up on a number of occasions. It was not until 2019 that sea surface temperatures fell below the mean and a continuous spell of rigid mélange allowed the terminus to readvance even though 200 m temperatures remained high on the shelf (Figs. 2c and 3b).

#### 4.1 Implications of further retreat

A decrease in surface elevations of outlet glaciers in the early 1990s was one of the first indications that the GrIS was losing mass via increased surface melt and dynamic thinning (Krabill et al., 2000; Krabill, 2004). Dynamic thinning is the result of acceleration when retreat and melt-driven thinning reduce resistive stresses at the glacier front. Seasonal cycles of dynamic thinning have recently been observed on Helheim, another large tidewater glacier 300 km to the south of KG (Bevan et al., 2015), where they are associated with fluctuations in ice front position (Kehrl et al., 2017). We also see dynamic thinning on KG (Fig. 3c).

The 2-year retreat of KG to a point only a kilometre or so seaward of the reverse bedrock slope, and further up fjord than at any point in the observation record, placed the glacier in a precarious position. Continued retreat, acceleration and dynamic thinning would have resulted in the ice front refloating when it would then have been susceptible to basal melt and further thinning. However, during the first 5 months of 2019 the glacier advanced as normal during the winter and the mélange remained intact. Air temperatures are not yet available but shelf near-surface temperatures remained below average between December 2018 and April 2019 (Fig. 3b). Thus the behaviour of KG remains consistent with the idea of mélange back stress being the dominant control on frontal evolution.

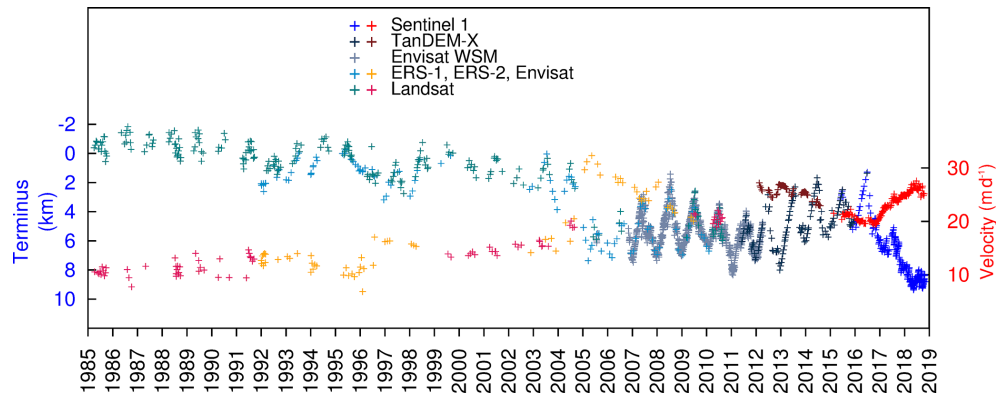
## 5 Conclusions

We conclude that the retreat of KG in 2017 was caused by weakened winter ice mélange that allowed sustained calving when the glacier would normally be advancing. The mélange is likely to have been weakened initially by anomalously warm water on the shelf in the latter half of 2016, which likely penetrated the fjord, and by anomalously warm air temperatures. Continued retreat in 2018 was facilitated by warm air temperatures hindering the formation of sea ice to bind a rigid mélange. Any additional retreat of KG would have taken the terminus into a region of retrograde bed slope, which could have resulted in further retreat and thinning via dynamics and basal melt. Cooler water on the shelf and presumably in the fjord during winter 2019 allowed a persistent mélange to form and the glacier front readvanced by 3 km.

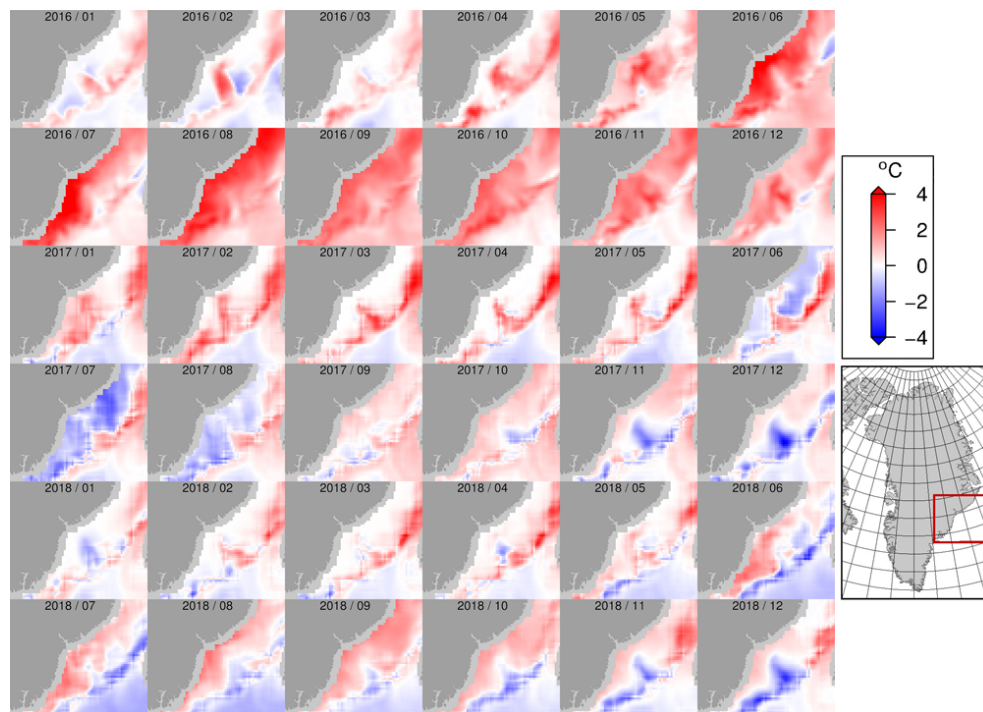
Our research emphasizes the importance of accounting for the delivery of heat into the fjords of Greenland by surface as well as deep water. Heat delivered by surface water can weaken the stabilizing influence of ice mélange proximal to ocean-terminating glaciers, disrupting the seasonal calving pattern and triggering terminus retreat.



## Appendix A



**Figure A1.** Time series of ice front positions and velocity, with observations colour coded according to data source. Sentinel 1 includes 1A and 1B, and TerraSAR-X refers to a single image from the TanDEM-X pair. Envisat WSM is Wideswath Mode data, European Remote Sensing satellites ERS-1 and ERS-2 and Envisat are Image Mode data, and Landsat includes data from satellites 5, 7 and 8.



**Figure A2.** Anomalies in 5 m ocean potential temperatures. Temperatures for 1991–2017 are the Arctic Ocean Physics Reanalysis monthly mean data supplied by the Copernicus Marine Environment Monitoring Service (CMEMS). Temperatures for 2018 are based on monthly means of the Arctic Ocean Analysis and Forecast Product also from CMEMS. Anomalies are relative to the period 1992–2018.

**Data availability.** The NERC Polar Data Centre hosts the time series data on frontal positions (<https://doi.org/10.5285/b317f707-2ef6-449c-acc3-6bb087efecb1>, Bevan et al., 2019b), surface velocities (<https://doi.org/10.5285/c26e3873-e33e-45be-b76b-87f3b8827101> Bevan et al., 2019d) and surface elevations (<https://doi.org/10.5285/3bbacca6-d2cd-46be-b824-b828572ca486>, Bevan et al., 2019c), and Video 1 (<https://doi.org/10.5285/61100705-dfbc-489d-b729-1268ec743bbf>, Bevan et al., 2019a).

**Author contributions.** The study was led and the paper drafted by SB; the project was led by DB and AL. Expert advice, data and contributions to the text and figures were supplied by AL (SAR imagery and Sentinel velocities), DB and JT (interpretation of glacier calving and interaction with mélange), and TC (fjord processes). TanDEM-X DEMs and TerraSAR-X velocities were processed by SB.

**Competing interests.** The authors declare that they have no competing interests.

**Acknowledgements.** The research under project CALISMO (Calving Laws for Ice Sheet Models) was funded by the Natural Environment Research Council (NERC) grants NE/P011365/1. TanDEM-X data used for generating the DEMs and for ice front positions and glacier velocities were supplied by DLR, as part of NERC project NE/I0071481/1. Satellite imagery for front positions were supplied by the European Space Agency (ERS-1 and ERS-2, Envisat, Sentinel) and the U.S. Geological Survey (Landsat). BedMachine data were obtained from NASA National Snow and Ice Data Center Distributed Active Archive Center, <https://doi.org/10.5067/2CIX82HUV88Y> (Morlighem et al., 2017) (16 January 2018). DMI weather observations were downloaded from <https://www.dmi.dk/publikationer/> (last access: 16 June 2019). The CMEMS ocean reanalysis data were downloaded from [ftp://mftp.cmems.met.no/Core/ARCTIC\\_REANALYSIS\\_PHYS\\_002\\_003/dataset-ran-arc-myocceanv2-be](ftp://mftp.cmems.met.no/Core/ARCTIC_REANALYSIS_PHYS_002_003/dataset-ran-arc-myocceanv2-be) (last access: 6 June 2019), and the ocean analysis and forecast data are from [ftp://mftp.cmems.met.no/Core/ARCTIC\\_ANALYSIS\\_FORECAST\\_PHYS\\_002\\_001\\_a/dataset-topaz4-arc-myocceanv2-be](ftp://mftp.cmems.met.no/Core/ARCTIC_ANALYSIS_FORECAST_PHYS_002_001_a/dataset-topaz4-arc-myocceanv2-be) (last access: 6 June 2019).

**Financial support.** The research under project CALISMO (Calving Laws for Ice Sheet Models) was funded by the Natural Environment Research Council (NERC) (grant no. NE/P011365/1) and TanDEM-X data used for generating the DEMs and for ice front positions and glacier velocities were supplied by DLR, as part of the NERC project (grant no. NE/I0071481/1).

**Review statement.** This paper was edited by Ginny Catania and reviewed by Neil Fraser and one anonymous referee.

## References

- Amundson, J. M., Fahnestock, M., Truffer, M., Brown, J., Lüthi, M. P., and Motyka, R. J.: Ice mélange dynamics and implications for terminus stability, Jakobshavn Isbræ, Greenland, *J. Geophys. Res.*, 115, F01005, <https://doi.org/10.1029/2009jf001405>, 2010.
- Andrews, J. T., Milliman, J. D., Jennings, A. E., Rynes, N., and Dwyer, J.: Sediment Thicknesses and Holocene Glacial Marine Sedimentation Rates in Three East Greenland Fjords (ca. 68° N), *The J. Geol.*, 102, 669–683, <https://doi.org/10.1086/629711>, 1994.
- Azetsu-Scott, K. and Syvitski, J. P. M.: Influence of melting icebergs on distribution, characteristics and transport of marine particles in an East Greenland fjord, *J. Geophys. Res.-Oceans*, 104, 5321–5328, <https://doi.org/10.1029/1998jc900083>, 1999.
- Bevan, S. L., Luckman, A. J., and Murray, T.: Glacier dynamics over the last quarter of a century at Helheim, Kangerdlugssuaq and 14 other major Greenland outlet glaciers, *The Cryosphere*, 6, 923–937, <https://doi.org/10.5194/tc-6-923-2012>, 2012.
- Bevan, S. L., Luckman, A., Khan, S. A., and Murray, T.: Seasonal dynamic thinning at Helheim Glacier, *Earth Planet. Sci. Lett.*, 415, 47–53, <https://doi.org/10.1016/j.epsl.2015.01.031>, 2015.
- Bevan, S., Luckman, A., Benn, D., Cowton, T., and Todd, J.: Kangerdlugssuaq Glacier Sentinel 1 Synthetic Aperture Radar movie, 2015–2018, Discovery Metadata System, <https://doi.org/10.5285/61100705-dfbc-489d-b729-1268ec743bbf>, 2019a.
- Bevan, S., Luckman, A., Benn, D., Cowton, T., and Todd, J.: Kangerdlugssuaq Glacier ice front positions, 1985–2018, Discovery Metadata System, <https://doi.org/10.5285/b317f707-2ef6-449c-acc3-6bb087efecb1>, 2019b.
- Bevan, S., Luckman, A., Benn, D., Cowton, T., and Todd, J.: Kangerdlugssuaq Glacier surface elevations, 2012–2018, Discovery Metadata System, <https://doi.org/10.5285/3bbacca6-d2cd-46be-b824-b828572ca486>, 2019c.
- Bevan, S., Luckman, A., Benn, D., Cowton, T., and Todd, J.: Kangerdlugssuaq Glacier surface flow speeds from feature tracking, 1985–2018, Discovery Metadata System, <https://doi.org/10.5285/c26e3873-e33e-45be-b76b-87f3b8827101>, 2019d.
- Brough, S., Carr, J. R., Ross, N., and Lea, J. M.: Exceptional Retreat of Kangerlussuaq Glacier, East Greenland, Between 2016 and 2018, *Front. Earth Sci.*, 7, 123, <https://doi.org/10.3389/feart.2019.00123>, 2019.
- Burton, J. C., Amundson, J. M., Cassotto, R., Kuo, C.-C. C., and Dennin, M.: Quantifying flow and stress in ice mélange, the world's largest granular material., *P. Natl. Acad. Sci. USA*, 115, 5105–5110, 2018.
- Cassotto, R., Fahnestock, M., Amundson, J. M., Truffer, M., and Joughin, I.: Seasonal and interannual variations in ice mélange and its impact on terminus stability, Jakobshavn Isbræ, Greenland, *J. Glaciol.*, 61, 76–88, <https://doi.org/10.3189/2015JG13J235>, 2015.
- Christoffersen, P., Mugford, R. I., Heywood, K. J., Joughin, I., Dowdeswell, J. A., Syvitski, J. P. M., Luckman, A., and Benham, T. J.: Warming of waters in an East Greenland fjord prior to glacier retreat: mechanisms and connection to large-scale atmospheric conditions, *The Cryosphere*, 5, 701–714, <https://doi.org/10.5194/tc-5-701-2011>, 2011.

- Christoffersen, P., O'Leary, M., Van Angelen, J. H., and Van Den Broeke, M.: Partitioning effects from ocean and atmosphere on the calving stability of Kangerdlugssuaq Glacier, East Greenland, *Ann. Glaciol.*, 53, 249–256, <https://doi.org/10.3189/2012aog60a087>, 2012.
- Cowton, T., Sole, A., Nienow, P., Slater, D., Wilton, D., and Hanna, E.: Controls on the transport of oceanic heat to Kangerdlugssuaq Glacier, East Greenland, *J. Glaciol.*, 62, 1167–1180, <https://doi.org/10.1017/jog.2016.117>, 2016.
- Cowton, T. R., Sole, A. J., Nienow, P. W., Slater, D. A., and Christoffersen, P.: Linear response of east Greenland's tidewater glaciers to ocean/atmosphere warming, *P. Natl. Acad. Sci. USA*, 115, 7907–7912, <https://doi.org/10.1073/pnas.1801769115>, 2018.
- Dowdeswell, J.: Cruise report – JR106b, RSS James Clark Ross, Kangerdlugssuaq Fjord and shelf, east Greenland, NERC Auto-sub Under Ice thematic programme, 2004
- Dowdeswell, J. A., Evans, J., and Cofaigh: Submarine landforms and shallow acoustic stratigraphy of a 400 km-long fjord-shelf-slope transect, Kangerlussuaq margin, East Greenland, *Quaternary Sci. Rev.*, 29, 3359–3369, <https://doi.org/10.1016/j.quascirev.2010.06.006>, 2010.
- Enderlin, E. M., Howat, I. M., and Vieli, A.: High sensitivity of tidewater outlet glacier dynamics to shape, *The Cryosphere*, 7, 1007–1015, <https://doi.org/10.5194/tc-7-1007-2013>, 2013.
- Enderlin, E. M., Howat, I. M., Jeong, S., Noh, M.-J., van Angelen, J. H., and van den Broeke, M. R.: An improved mass budget for the Greenland ice sheet, *Geophys. Res. Lett.*, 41, 2013GL059010+, <https://doi.org/10.1002/2013gl059010>, 2014.
- Fraser, N. J. and Inall, M. E.: Influence of Barrier Wind Forcing on Heat Delivery Towards the Greenland Ice Sheet, *J. Geophys. Res.-Oceans*, 123, 2513–2538, <https://doi.org/10.1002/2017jc013464>, 2018.
- Fried, M. J., Catania, G. A., Stearns, L. A., Sutherland, D. A., Bartholomaeus, T. C., Shroyer, E., and Nash, J.: Reconciling Drivers of Seasonal Terminus Advance and Retreat at 13 Central West Greenland Tidewater Glaciers, *J. Geophys. Res.-Earth Surf.*, 123, 1590–1607, <https://doi.org/10.1029/2018jf004628>, 2018.
- Hanna, E., Cappelen, J., Fettweis, X., Huybrechts, P., Luckman, A., and Ribergaard, M. H.: Hydrologic response of the Greenland ice sheet: the role of oceanographic warming, *Hydrol. Process.*, 23, 7–30, <https://doi.org/10.1002/hyp.7090>, 2009.
- Howat, I. M. and Eddy, A.: Multi-decadal retreat of Greenland's marine-terminating glaciers, *J. Glaciol.*, 57, 389–396, <https://doi.org/10.3189/002214311796905631>, 2011.
- Howat, I. M., Joughin, I., Tulaczyk, S., and Gogineni, S.: Rapid retreat and acceleration of Helheim Glacier, east Greenland, *Geophys. Res. Lett.*, 32, L22502+, <https://doi.org/10.1029/2005gl024737>, 2005.
- Howat, I. M., Joughin, I., Fahnestock, M., Smith, B. E., and Scambos, T. A.: Synchronous retreat and acceleration of southeast Greenland outlet glaciers 2000–06: ice dynamics and coupling to climate, *J. Glaciol.*, 54, 646–660, <https://doi.org/10.3189/002214308786570908>, 2008.
- Howat, I. M., Box, J. E., Ahn, Y., Herrington, A., and McFadden, E. M.: Seasonal variability in the dynamics of marine-terminating outlet glaciers in Greenland, *J. Glaciol.*, 56, 601–613, <https://doi.org/10.3189/002214310793146232>, 2010.
- Howat, I. M., Negrete, A., and Smith, B. E.: The Greenland Ice Mapping Project (GIMP) land classification and surface elevation data sets, *The Cryosphere*, 8, 1509–1518, <https://doi.org/10.5194/tc-8-1509-2014>, 2014.
- Inall, M. E., Murray, T., Cottier, F. R., Scharrer, K., Boyd, T. J., Heywood, K. J., and Bevan, S. L.: Oceanic heat delivery via Kangerdlugssuaq Fjord to the south-east Greenland ice sheet, *J. Geophys. Res.-Oceans*, 119, 631–645, <https://doi.org/10.1002/2013jc009295>, 2014.
- Jackson, R. H., Straneo, F., and Sutherland, D. A.: Externally forced fluctuations in ocean temperature at Greenland glaciers in non-summer months, *Nat. Geosci.*, 7, 503–508, <https://doi.org/10.1038/ngeo2186>, 2014.
- Jakobsson, M., Mayer, L., Coakley, B., Dowdeswell, J. A., Forbes, S., Fridman, B., Hodnesdal, H., Noormets, R., Pedersen, R., Rebesco, M., Schenke, H. W., Zarayskaya, Y., Accettella, D., Armstrong, A., Anderson, R. M., Bienhoff, P., Camerlenghi, A., Church, I., Edwards, M., Gardner, J. V., Hall, J. K., Hell, B., Hestvik, O., Kristoffersen, Y., Marcussen, C., Mohammad, R., Mosher, D., Nghiem, S. V., Pedrosa, M. T., Travaglini, P. G., and Weatherall, P.: The International Bathymetric Chart of the Arctic Ocean (IBCAO) Version 3.0, *Geophys. Res. Lett.*, 39, L12609, <https://doi.org/10.1029/2012gl052219>, 2012.
- Kehrl, L. M., Joughin, I., Shean, D. E., Floricioiu, D., and Krieger, L.: Seasonal and interannual variabilities in terminus position, glacier velocity, and surface elevation at Helheim and Kangerlussuaq Glaciers from 2008 to 2016, *J. Geophys. Res.-Earth Surf.*, 122, 2016JF004133+, <https://doi.org/10.1002/2016jf004133>, 2017.
- Khan, S. A., Kjeldsen, K. K., Kjær, K. H., Bevan, S., Luckman, A., Aschwanden, A., Bjørk, A. A., Korsgaard, N. J., Box, J. E., van den Broeke, M., van Dam, T. M., and Fitzner, A.: Glacier dynamics at Helheim and Kangerdlugssuaq glaciers, southeast Greenland, since the Little Ice Age, *The Cryosphere*, 8, 1497–1507, <https://doi.org/10.5194/tc-8-1497-2014>, 2014.
- Krabill, W.: Greenland Ice Sheet: Increased coastal thinning, *Geophys. Res. Lett.*, 31, L24402, <https://doi.org/10.1029/2004gl021533>, 2004.
- Krabill, W., Abdalati, W., Frederick, E., Manizade, S., Martin, C., Sonntag, J., Swift, R., Thomas, R., Wright, W., and Yungel, J.: Greenland ice sheet: High-elevation balance and peripheral thinning, *Science*, 289, 428–430, 2000.
- Krieger, G., Zink, M., Bachmann, M., Bräutigam, B., Schulze, D., Martone, M., Rizzoli, P., Steinbrecher, U., Walter Antony, J., De Zan, F., Hajsek, I., Papathanassiou, K., Kugler, F., Rodriguez Cassola, M., Younis, M., Baumgartner, S., López-Dekker, P., Prats, P., and Moreira, A.: TanDEM-X: A radar interferometer with two formation-flying satellites, *Acta Astronaut.*, 89, 83–98, <https://doi.org/10.1016/j.actaastro.2013.03.008>, 2013.
- Krug, J., Durand, G., Gagliardini, O., and Weiss, J.: Modelling the impact of submarine frontal melting and ice mélange on glacier dynamics, *The Cryosphere*, 9, 989–1003, <https://doi.org/10.5194/tc-9-989-2015>, 2015.
- Luckman, A., Murray, T., de Lange, R., and Hanna, E.: Rapid and synchronous ice-dynamic changes in East Greenland, *Geophys. Res. Lett.*, 33, 33729+, <https://doi.org/10.1029/2005gl025428>, 2006.

- Luckman, A., Benn, D. I., Cottier, F., Bevan, S., Nilsen, F., and Inall, M.: Calving rates at tidewater glaciers vary strongly with ocean temperature, *Nat. Commun.*, 6, 8566, <https://doi.org/10.1038/ncomms9566>, 2015.
- Millan, R., Rignot, E., Mouginot, J., Wood, M., Bjørk, A. A., and Morlighem, M.: Vulnerability of Southeast Greenland Glaciers to Warm Atlantic Water From Operation IceBridge and Ocean Melting Greenland Data, *Geophys. Res. Lett.*, 45, 2688–2696, <https://doi.org/10.1002/2017gl076561>, 2018.
- Moon, T., Joughin, I., Smith, B., and Howat, I.: 21st-Century Evolution of Greenland Outlet Glacier Velocities, *Science*, 336, 576–578, <https://doi.org/10.1126/science.1219985>, 2012.
- Moon, T., Joughin, I., and Smith, B.: Seasonal to multiyear variability of glacier surface velocity, terminus position, and sea ice/ice mélange in northwest Greenland: NW GLACIER VARIABILITY, *J. Geophys. Res.-Earth Surf.*, 120, 818–833, <https://doi.org/10.1002/2015jf003494>, 2015.
- Morlighem, M., Williams, C. N., Rignot, E., An, L., Arndt, J. E., Bamber, J. L., Catania, G., Chauché, N., Dowdeswell, J. A., Dorschel, B., Fenty, I., Hogan, K., Howat, I., Hubbard, A., Jakobsson, M., Jordan, T. M., Kjeldsen, K. K., Millan, R., Mayer, L., Mouginot, J., Noël, B. P. Y., O’Cofaigh, C., Palmer, S., Rysgaard, S., Seroussi, H., Siegert, M. J., Slabon, P., Straneo, F., van den Broeke, M. R., Weinrebe, W., Wood, M., and Zinglensen, K. B.: BedMachine v3: Complete Bed Topography and Ocean Bathymetry Mapping of Greenland From Multibeam Echo Sounding Combined With Mass Conservation, *Geophys. Res. Lett.*, 44, 2017GL074954+, <https://doi.org/10.1002/2017gl074954>, 2017.
- Murray, T., Scharrer, K., James, T. D., Dye, S. R., Hanna, E., Booth, A. D., Selmes, N., Luckman, A., Hughes, A. L. C., Cook, S., and Huybrechts, P.: Ocean regulation hypothesis for glacier dynamics in southeast Greenland and implications for ice sheet mass changes, *J. Geophys. Res.*, 115, F03026, <https://doi.org/10.1029/2009jf001522>, 2010.
- OMG Mission (2016): Conductivity, Temperature and Depth (CTD) data from the ocean survey. Ver. 0.1. OMG SDS, CA, USA, <https://doi.org/10.5067/OMGEV-AXCTD>, 2018.
- Rignot, E. and Kanagaratnam, P.: Changes in the velocity structure of the Greenland ice sheet, *Science*, 311, 986–990, <https://doi.org/10.1126/science.1121381>, 2006.
- Schoof, C.: Ice sheet grounding line dynamics: Steady states, stability, and hysteresis, *J. Geophys. Res.*, 112, F03S28+, <https://doi.org/10.1029/2006jf000664>, 2007.
- Shepherd, A., Ivins, E. R., Geruo, A., Barletta, V. R., Bentley, M. J., Bettadpur, S., Briggs, K. H., Bromwich, D. H., Forsberg, R., Galin, N., Horwath, M., Jacobs, S., Joughin, I., King, M. A., Lenaerts, J. T. M., Li, J., Ligtenberg, S. R. M., Luckman, A., Luthcke, S. B., McMillan, M., Meister, R., Milne, G., Mouginot, J., Muir, A., Nicolas, J. P., Paden, J., Payne, A. J., Pritchard, H., Rignot, E., Rott, H., Sørensen, L. S., Scambos, T. A., Scheuchl, B., Schrama, E. J. O., Smith, B., Sundal, A. V., van Angelen, J. H., van de Berg, W. J., van den Broeke, M. R., Vaughan, D. G., Velicogna, I., Wahr, J., Whitehouse, P. L., Wingham, D. J., Yi, D., Young, D., and Zwally, H. J.: A Reconciled Estimate of Ice-Sheet Mass Balance, *Science*, 338, 1183–1189, <https://doi.org/10.1126/science.1228102>, 2012.
- Straneo, F. and Heimbach, P.: North Atlantic warming and the retreat of Greenland’s outlet glaciers, *Nature*, 504, 36–43, <https://doi.org/10.1038/nature12854>, 2013.
- Straneo, F., Sutherland, D. A., Holland, D., Gladish, C., Hamilton, G. S., Johnson, H. L., Rignot, E., Xu, Y., and Koppes, M.: Characteristics of ocean waters reaching Greenland’s glaciers, *Ann. Glaciol.*, 53, 202–210, <https://doi.org/10.3189/2012aog60a059>, 2012.
- Sutherland, D. A., Straneo, F., and Pickart, R. S.: Characteristics and dynamics of two major Greenland glacial fjords, *J. Geophys. Res.-Oceans*, 119, 3767–3791, <https://doi.org/10.1002/2013jc009786>, 2014.
- Timmermans, M.-L.: Sea Surface Temperature, in Arctic Report Card 2016, available at: <http://www.arctic.noaa.gov/Report-Card> (last access: February 2019), 2016.
- Todd, J. and Christoffersen, P.: Are seasonal calving dynamics forced by buttressing from ice mélange or undercutting by melting? Outcomes from full-Stokes simulations of Store Glacier, West Greenland, *The Cryosphere*, 8, 2353–2365, <https://doi.org/10.5194/tc-8-2353-2014>, 2014.
- Todd, J., Christoffersen, P., Zwinger, T., Råback, P., Chauché, N., Benn, D., Luckman, A., Ryan, J., Toberg, N., Slater, D., and Hubbard, A.: A Full-Stokes 3-D Calving Model Applied to a Large Greenlandic Glacier, *J. Geophys. Res.-Earth Surf.*, 123, 410–432, <https://doi.org/10.1002/2017jf004349>, 2018.
- van den Broeke, M. R., Enderlin, E. M., Howat, I. M., Kuipers Munneke, P., Noël, B. P. Y., van de Berg, W. J., van Meijgaard, E., and Wouters, B.: On the recent contribution of the Greenland ice sheet to sea level change, *The Cryosphere*, 10, 1933–1946, <https://doi.org/10.5194/tc-10-1933-2016>, 2016.