



Swansea University
Prifysgol Abertawe



Cronfa - Swansea University Open Access Repository

This is an author produced version of a paper published in:
Microscopy and Microanalysis

Cronfa URL for this paper:

<http://cronfa.swan.ac.uk/Record/cronfa43490>

Paper:

Mitchell, R., Pleydell-Pearce, C., Coleman, M., Davies, P., North, L., Johnston, R. & Harris, W. (2018). Correlative Imaging and Bio-inspiration: Multi-scale and Multi-modal Investigations of the Acorn Barnacle (*Semibalanus balanoides*). *Microscopy and Microanalysis*, 24(S1), 376-377.

<http://dx.doi.org/10.1017/S1431927618002374>

This item is brought to you by Swansea University. Any person downloading material is agreeing to abide by the terms of the repository licence. Copies of full text items may be used or reproduced in any format or medium, without prior permission for personal research or study, educational or non-commercial purposes only. The copyright for any work remains with the original author unless otherwise specified. The full-text must not be sold in any format or medium without the formal permission of the copyright holder.

Permission for multiple reproductions should be obtained from the original author.

Authors are personally responsible for adhering to copyright and publisher restrictions when uploading content to the repository.

<http://www.swansea.ac.uk/library/researchsupport/ris-support/>

Correlative Imaging and bio-inspiration: multi-scale and multi-modal investigations of the acorn barnacle (*Semibalanus balanoides*)

Ria L. Mitchell¹, Cameron Pleydell-Pearce¹ Mark P. Coleman¹ Peter Davies¹ Laura North¹ Will Harris² and Richard E. Johnston¹

¹ Advanced Imaging of Materials (AIM) Facility, College of Engineering, Swansea University, Swansea, SA1 8EN, UK.

² Carl Zeiss X-ray Microscopy, Pleasanton, CA, USA.

Natural-forming biomaterials can be subject to extremes of moisture, chemistry, loading, temperature flux, and predation. Yet, those forming in the marine environment for example, form in ambient conditions using only the habitat-dependent resources available to the organism (e.g., elemental composition of seawater for precipitation of CaCO₃ hard parts). Through evolution and adaptation, organisms have developed an incredibly diverse range of strategies to survive despite these unpredictable habitat-dependent conditions; this includes the development of complex chemical-biological-structural relationships [1-2], which not only enhance structural integrity but also make the most of the resources available to them. Studying these relationships is pivotal to developing bio-inspiration strategies that can contribute to novel human-made engineering and material science development and innovation.

The process of formation and ultimately function can be better understood by investigating these complex biological systems at various length scales and linking chemical and physical properties using correlative imaging. Correlative imaging is useful because it assesses how features at the millimeter scale are related to features at the nanometer scale (and vice-versa), and how multiple modalities can be linked (e.g., physical-chemical-mechanical properties) [3-4]. Correlative imaging allows us to identify sites of interest across various 2D and 3D imaging and analytical platforms by combining light, electron and X-ray microscopy to generate diverse information taken directly from nature.

Here, we have used the correlative potential of numerous coupled systems at different length scales: X-ray microscopy (μ CT), scanning electron microscopy (SEM), optical light microscopy (OM), and focused ion beam microscopy (FIB) to ascertain the chemical composition, microstructural properties, and crystallographic orientation of plate joints (ala) in the 'shell' of the barnacle *Semibalanus balanoides*. The ala are the interlocking meeting point of neighboring plates [5] and are often 'shared' between adjoining organisms. The interlocks enable the organism to expand in size during growth, and consequently need to be structurally strong to resist damage [5]. μ CT reveals complex interactions and relationships between neighboring plates that can only be identified via non-destructive 3D methods. OM and SEM indicate specific chemical and crystallographic orientations at the ala tips, which has implications for natural strengthening mechanisms and potential biologically-mediated precipitation of specific elements. FIB milling is used to isolate micro-scale areas of interest from larger macro-scale structures in order to link overall properties to microstructural feature. From this work we have developed a better understanding of how even small-scale and often overlooked organisms have mechanical and structural properties which can reveal naturally-occurring bio-engineering. Understanding the organism's behavior is essential to understand the functions of these complex forms. The work demonstrates that correlative methods that span different platforms and techniques such as this enable the extension of the fundamental basics of material science to broaden the application of bio-inspiration in human-made engineering practices.

References:

- [1] L North, D Labonte, ML Oyen, MP Coleman, HB Caliskan, RE Johnston, APL Materials, **5** (2017), p. 1-7.
- [2] JHG Rocha, AF Lemos, S Agathopoulos, P Valerio, S Kannan, FN Oktar, Bone 37 (2005), p. 850–857.
- [3] K Grandfield, H Engqvist, Advances in Materials Science and Engineering, v. 2012 (2015), p. 1-6.
- [4] J Gelb, T Volkenandt, A Merkle, Microscopy and Microanalysis Conference Proceedings 23 (Suppl 1), 2017.
- [5] GR Murdock, JD Currey, Biological Bulletin 155 (1978), p. 169-192

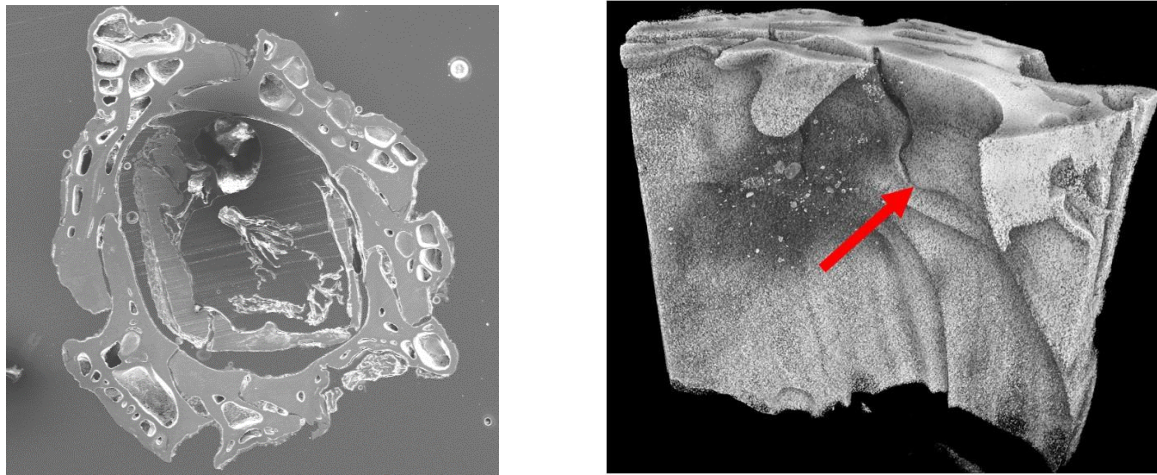


Figure 1a: 2D SEM image of section of barnacle shell, illustrating six ala. **Figure 1b:** μ CT image of barnacle interlocking plates. Arrow indicates location of ala. This enables us to trace the ala through the 3D structure of the barnacle.

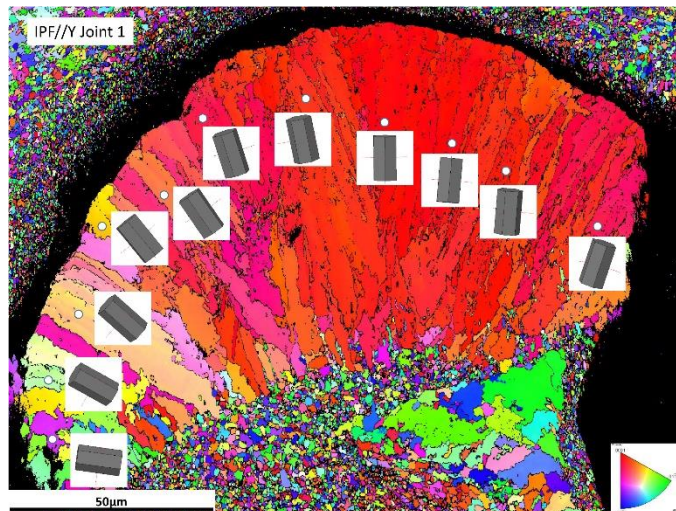


Figure 2. 2D EBSD crystallographic orientations in the tip of the ala. There is an elongation of microstructure around the tip as well as some preferred crystallographic texture, which contributes towards structural integrity.