



Swansea University
Prifysgol Abertawe



Cronfa - Swansea University Open Access Repository

This is an author produced version of a paper published in:
International Journal of Osteopathic Medicine

Cronfa URL for this paper:
<http://cronfa.swan.ac.uk/Record/cronfa35955>

Paper:

Saracutu, M., Rance, J., Davies, H. & Edwards, D. (2017). The effects of osteopathic treatment on psychosocial factors in people with persistent pain: A systematic review. *International Journal of Osteopathic Medicine*
<http://dx.doi.org/10.1016/j.ijosm.2017.10.005>

Released under the terms of a Creative Commons CC-BY-NC-ND Licence.

This item is brought to you by Swansea University. Any person downloading material is agreeing to abide by the terms of the repository licence. Copies of full text items may be used or reproduced in any format or medium, without prior permission for personal research or study, educational or non-commercial purposes only. The copyright for any work remains with the original author unless otherwise specified. The full-text must not be sold in any format or medium without the formal permission of the copyright holder.

Permission for multiple reproductions should be obtained from the original author.

Authors are personally responsible for adhering to copyright and publisher restrictions when uploading content to the repository.

<http://www.swansea.ac.uk/library/researchsupport/ris-support/>

Accepted Manuscript

The effects of osteopathic treatment on psychosocial factors in people with persistent pain: A systematic review

Madalina Saracutu, Jaynie Rance, Helen Davies, Darren J. Edwards



PII: S1746-0689(16)30116-X

DOI: [10.1016/j.ijosm.2017.10.005](https://doi.org/10.1016/j.ijosm.2017.10.005)

Reference: IJOSM 452

To appear in: *International Journal of Osteopathic Medicine*

Received Date: 22 November 2016

Revised Date: 18 September 2017

Accepted Date: 6 October 2017

Please cite this article as: Saracutu M, Rance J, Davies H, Edwards DJ, The effects of osteopathic treatment on psychosocial factors in people with persistent pain: A systematic review, *International Journal of Osteopathic Medicine* (2017), doi: 10.1016/j.ijosm.2017.10.005.

This is a PDF file of an unedited manuscript that has been accepted for publication. As a service to our customers we are providing this early version of the manuscript. The manuscript will undergo copyediting, typesetting, and review of the resulting proof before it is published in its final form. Please note that during the production process errors may be discovered which could affect the content, and all legal disclaimers that apply to the journal pertain.

Madalina Saracutu, Jaynie Rance, Helen Davies, Darren J. Edwards

Swansea University, UK

Corresponding author

Madalina Saracutu

Room 117

College of Human and Health Sciences

Haldane Building, Singleton Park

Swansea University, SA2 8PP

Email: 879278@swansea.ac.uk

Contact: 07473797395

psychosocial factors in people with persistent
pain: a systematic review

ACCEPTED MANUSCRIPT

and management is yet to be improved. The last decades have seen a shift in pain management, from the biomedical model to a biopsychosocial model. There is also a significant body of evidence emphasizing the effects of Osteopathy in chronic pain management. Given the relevance of psychosocial factors in aetiology and maintenance of long-term pain, it is essential to investigate whether Osteopathy has an influence on depression, anxiety, fear avoidance or pain catastrophizing. This review will identify and synthesize relevant primary research focused on the effects of osteopathic interventions on psychosocial factors in patients living with different persistent pain conditions. Studies were identified by searching seven databases (Medline complete, CINAHL, Cochrane Library, Psychinfo, Psycharticles, Web of Science and Scopus) between 1980 and 2017. Peer reviewed articles reporting effects of: Osteopathic manual therapy, Osteopathic Manipulation, Mobilization, Spinal manipulation, high velocity and low amplitude manipulation, massage and soft tissue treatment were extracted. A total of 16 RCTs were selected. Two out of five reported significant differences in depression; in regards to anxiety, all the four trials found significant effects; two out of three trials reported a significant reduction in fear avoidance while six out of seven trials found a significant enhancement of health status and three out of four found an increase in quality of life. The findings of this review are encouraging; suggesting that osteopathic treatment may have some effects on anxiety, fear avoidance, quality of life and general health status in populations living with persistent pain.

Keywords: persistent pain; Osteopathy; psychosocial factors; depression; anxiety; avoidance

This systematic review contributes to the advancement of knowledge in regards to the role of Osteopathy in the management of persistent pain and it is one of the few to explore the effects of osteopathic interventions on psychosocial factors. There are important implications in terms of improving pain management by using a holistic approach, and also there is scope for pairing Osteopathic treatment with psychological interventions in order to enhance the health and wellbeing of people with long-term pain.

Persistent pain¹ is recognised as one of the most pervasive and challenging problems that the medical community is facing nowadays. Persistent pain is regarded more as a complex pathophysiological, diagnostic and therapeutic situation rather than a persistent symptom.^[1] Pain can have a highly destructive impact on the psychological and social wellbeing of individuals, who commonly experience high levels of stress and struggle to self-manage.^[2] Persistent pain is known to affect the individuals' activity, social interactions and consequently their wellbeing.^[3] Furthermore, there is a high rate of comorbidity in the occurrence of persistent pain and mental health.^[4] The average percentage of patients living with persistent pain who also display symptoms of anxiety and depression is reported to be between 50% and 75%.^[5, 6, 7] There is evidence revealing that the burden of persistent pain and its prevalence are underestimated and in addition, treatment is not always adequate.^[8] Given the costs to the individuals and society, new research is needed to address the complex nature of persistent pain and its management.

For more than a century, the biomedical model has been dominant in Western medicine.^[9] This approach postulates that pain originates through the physiological mechanisms in the human body.^[10] By seeking to explain all disease in biological terms, this model is reductionist. This approach is currently the most commonly used in medical science, determining disease prevention, diagnosis and treatment.^[11] Physicians are typically treating disease by identifying a single abnormality in isolation, much like mechanics locate the faulty part of a broken car.^[12] While reductionism focuses on a treat-the-symptom process, holism takes into account cultural and existential dimensions and everything that affects

¹ the terms "persistent pain" and "chronic pain" are often used interchangeably, but the newer term, "persistent pain," is preferred, because it is not associated with the negative attitudes and stereotypes that clinicians and patients often associate with the "chronic pain" label. (Weiner and Herr, 2002)

symptoms (MUS). These symptoms or diseases cannot be explained in terms of organic pathology, which contributes to the patients being subject to stigma and marginalization. ^[14]

A holistic approach may be more appropriate in understanding and managing this type of illness.

This is closely related to the Biopsychosocial model proposed by Engel that provides a holistic view of the human being, by defining the different hierarchically organised systems that interdependently constitute an individual. ^[15] For example, pain is regarded as an interactive psychophysiological phenomenon that cannot be separated into isolated, independent psychosocial and physical components. ^[16] This model is phenomenological, as it recognizes that the lived experience is filled with meaning and values. Bendelow suggested that the biomedical approach to pain is simplistic and unsophisticated, and it often results in physicians being frustrated due to the intractable nature of pain which then leads to doubting patients' reports of pain and labelling them as "frequent fliers" or "heart sink" patients. Not only does the biopsychosocial model provide a better account of the underlying dynamics of persistent pain, but it also provides healthcare professionals a set of alternative tools to address not only the biological but also the psychosocial variables associated with this condition. Pain cannot be evaluated without an understanding of the person who perceives it. ^[17]

Osteopathy has been defined as a patient centred healthcare discipline, based on the principles of interrelatedness between the structure and the function of the body, the innate ability of the body for self-healing and on adopting a whole person approach to health mainly by practicing manual treatment. ^[18] Osteopathic philosophy and practice is congruent with the biopsychosocial model, by adopting a whole person approach to illness and by

Osteopathic care is integrated into patient management in a unique way. The choice of technique, duration and frequency is also tailored for each individual patient and their needs. [20]

The results of a study commissioned by the General Osteopathic Council in 2014 show that the osteopathic patients report positive experiences. They suggest that osteopaths discuss the treatment options thoroughly with them and provide clear information about the costs. Other information regarding treatment risks, what treatment will involve and what an osteopath does is also shown to be highly valued by patients. Osteopathy provides patients a therapeutic option characterized by a low risk-to-benefit ratio and with an increasingly growing evidence base. [21]

There is also a significant body of evidence emphasizing the effects of Osteopathic treatment in managing persistent pain. Licciardone and his colleagues performed a meta-analysis and concluded that OMT (Osteopathic Manipulative Treatment) significantly reduces back pain, compared to placebo. [22] This effect has been shown to persist at three-month follow-up. Furthermore, a randomized controlled trial funded by the Medical Research Council (UK BEAM trial) concluded that the combination programme of spinal manipulation and exercise was more beneficial than either of the treatments alone and when compared with “best care”. [23] In addition, a health economic analysis conducted alongside this trial concluded that using spinal manipulation in addition to ‘best care’ is cost-effective in GP practices. Similar results were reported by Williams, who undertook a pragmatic trial for patients with neck or back pain in North Wales. [24] They reported that

² The concept of “homeostasis” is seen as a balanced and effective integration of the physical, chemical and mental components of the body (Stone, 1999)

that a primary care Osteopathy clinic added to usual general practice might be cost-effective. [25]

Osteopathy demonstrates good outcomes when compared to other treatments for persistent pain. Chown and his colleagues investigated differences between group exercise, physiotherapy and Osteopathy for patients with back pain in a hospital setting and collected data at baseline, six weeks and twelve months after discharge. [26] There was a smaller dropout rate among the Osteopathy group than in the other groups due to patients' preference for hands-on treatment, a more flexible appointment schedule or past experience with private practice. Furthermore, research by Orrock et al. explored the experiences of people receiving osteopathic healthcare by conducting a quantitative survey of patients with persistent non-specific low back pain followed by qualitative semi-structured interviews. [27] The results indicated that common outcomes of Osteopathy were: a reduction in pain, increased flexibility, and improvements in posture and in the ability to complete daily tasks. The participants commonly engaged in autonomous decision-making, and regarded Osteopathy as being holistic while emphasizing the individualisation of the interventions and the collaborative relationship with the osteopaths, who heard their stories and consulted them in regards to treatment and outcome planning.

Despite the existent evidence, more health economic data is needed to investigate the cost-effectiveness and cost utility of Osteopathy. A systematic review and critical appraisal of the available health economic evidence for Osteopathy only resulted in sixteen studies of which the majority demonstrated a high risk of bias. The authors concluded that published comparative health economic studies of Osteopathy cannot inform policy and practice due

regarding prudent healthcare- a concept denoting the need to identify interventions and initiatives that are cost-effective and promoting healthcare that fits the needs and circumstances of the citizens by making most effective use of available resources.^[29]

Further health economic analyses are needed to establish the cost-effectiveness and cost-utility of Osteopathy and other holistic modalities employed in chronic pain management. There is a gap in the literature when it comes to comparisons with standard practice or the best-available alternative.^[30]

Considerable efforts have been made to establish the role of psychosocial factors³ in chronic pain. Burton et al. and Pincus et al. emphasized the need for awareness of the psychosocial factors and the way they influence chronic pain outcomes.^[31, 32] A psychosocial factor strongly associated with disability and work loss is fear avoidance.^[33] The authors suggested that ‘fear of pain and what we do about it is more disabling than the pain itself’. Another relevant factor is ‘pain catastrophizing’, defined as a set of exaggerated and maladaptive cognitive and emotional responses during actual or anticipated painful stimulation.^[34] The literature also points to robust associations between pain catastrophizing and an array of pain related outcomes such as: clinical pain severity, pain-related activity interference, disability and depression.^[35, 36] There is also evidence linking psychosocial factors with the transition from acute to chronic pain.^[37, 38, 39] Psychosocial factors are significantly related to the onset of back pain and they also play a role in the development of persistent pain.^[40] Of these, pain-related cognitions, catastrophizing and fear-avoidance yielded the most empirical support. Moreover, psychosocial factors were shown to be more predictive than biomedical

³ According to World Health Organization (WHO), ‘psychosocial factors’ are defined as factors determining how individuals ‘deal with the demands and challenges of everyday life’, maintain a state of wellbeing while interacting with others, their culture and environment’ (WHO, 1993)

adapted from Acceptance and Commitment Therapy and utilised specifically for chronic pain. ^[41] This model posits that individuals should reduce their attempts to avoid or control pain and instead focus on pursuing their personal goals and engaging in valued activities through acceptance. ^[42] Research has also shown that pain-related acceptance is associated with higher physical functioning and less emotional distress. ^[43] Similarly, preliminary findings from the OsteoMap program, an NHS funded initiative conducted at the British School of Osteopathy (BSO) have revealed a significant improvement in psychological flexibility (CI 95%, 4. 48:10.87, p<. 0001) but also in levels of pain, mood and coping (CI 95%, 11.54: 20.53, p<. 0001) in a cohort of patients living with persistent pain. ^[44] This was as a result of a six weeks intervention based on osteopathic treatment and mindfulness and acceptance-based pain management exercises as outlined in a text book –“ACT made simple”. ^[45]

Aims

There is a plethora of evidence regarding the relevance and impact of psychosocial factors in the experience of persistent pain. It has been agreed that psychosocial factors contribute to the progression and maintenance of persistent pain. ^[46] There is also research emphasizing positive outcomes of Osteopathy in regards to different chronic pain conditions. Therefore, the aim of this review is to identify and synthesize relevant primary research in regards to the effects of osteopathic treatment on psychosocial factors. The review will focus on addressing a specific question (“What are the effects of Osteopathy on psychosocial factors of chronic pain?”). The evidence in this area is scarce; the number of osteopathic trials reporting psychosocial factors is fairly low. The review consists in an analysis of the relevant research evidence in this area and a systematic appraisal of quality by using Critical Appraisal Skills

METHOD

Inclusion and exclusion criteria

Type of study. Published peer reviewed RCTs and controlled clinical trials.

Type of participants. Adults with chronic pain (including: back pain, lower back pain, neck pain, shoulder pain, chronic headache, pelvic pain, fibromyalgia, arthritis).

Type of intervention. Studies using different modalities within Osteopathic practice: Osteopathic manual therapy (OMT), Osteopathic Manipulation (OM), Mobilization, Manipulation, Spinal manipulation, high velocity and low amplitude manipulation, (HVLA), Myofascial release, Manual Therapy, Massage, Soft tissue treatment.

Type of outcome. Trials reporting psychological outcomes including at least one of the following: depression, anxiety, avoidance, catastrophizing, acceptance and self-efficacy. Generic outcome measures with a psychological component (e.g. generic health status, quality of life) were also accepted.

Language. English.

Article exclusion criteria: reports or studies not published in English, no peer review, studies that are not RCTs or controlled clinical trials, studies that did not include adults, reports of asymptomatic adults, adults with acute pain, reports of pelvic post-partum pain or pain resulting from a different condition (e.g. chronic fatigue syndrome, IBS, Temporomandibular Joint Syndrome, Gout, Cancer etc.), reports of interventions other than Osteopathy, studies that did not report psychological outcomes (or generic outcomes with a psychological subcomponent).

Search strategy for identification of studies

The electronic databases *Medline complete*, *CINAHL complete*, *Cochrane Library*, *Psychinfo*, *Psycharticles*, *Web of Science* and *Scopus* have been searched from 1980 to 2017, using a search strategy that used a combination of keywords (*Table 1*). Reference lists from were also screened, in addition to citation tracking and hand searching of key journals.

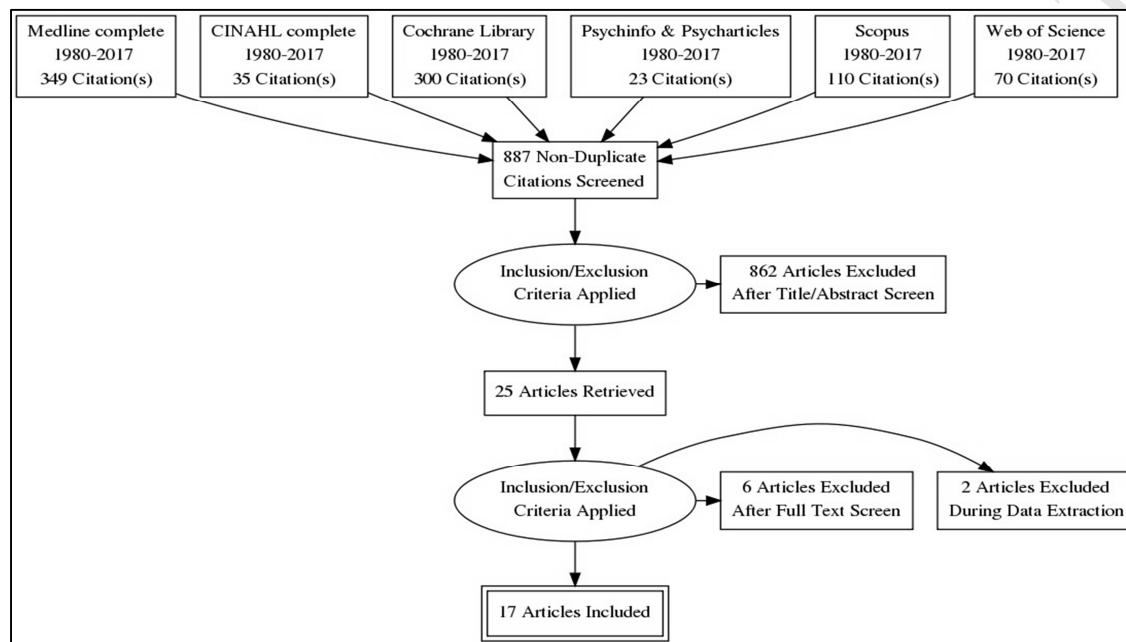
Table 1. Search terms and proximity operators⁴

'chronic pain', 'persistent pain', 'musculoskeletal pain', 'nociceptive pain', 'neuropathic pain', 'chronic headache', 'back pain', 'fibromyalgia', 'neck pain', 'pelvic pain', 'arthritis'
osteopath* n/3 manipulat* or "osteopathic intervention" or 'manipulative treatment" or "OMT" or "Spinal Manipulative Therapy" or "myofascial release" or "HVLA" or "Soft tissue mobilization" or 'muscle energy technique' or 'soft tissue treatment' or 'mobilization' or 'massage' or 'soft tissue treatment'
'psychosocial factors', 'psychosocial outcomes', 'psychosocial health', 'acceptance', 'catastrophizing', 'avoidance', 'depression', 'anxiety', 'self-efficacy'

⁴ Proximity operators

Proximity searching has been employed, to help refine the search. Proximity operators allow searching for two or more words that occur within a specific number of words from each other (e.g. osteopath* n/3 manipulat*). The databases searched have different proximity operators (Medline, CINAHL, Psychinfo, Psycharticles use n/; Web of Science & Cochrane Reviews employ NEAR/ and Scopus uses w/).

Figure 1. Flow diagram of the selection process (PRISMA diagram adapted from Moher et al., 2009)



Data selection

Identification of studies

The search strategy identified 887 potentially relevant titles and abstracts that were screened for potential inclusion. After removing duplicates, 862 abstracts were reviewed. The inclusion and exclusion criteria were applied. Trials reporting outcomes from samples with pain resulting from other conditions, trials reporting interventions different than Osteopathy, trials of asymptomatic, acute or sub-acute samples and or trials published in a language different than English were excluded. 25 articles were retrieved and, after full text screening 6 were excluded for not fully meeting the inclusion criteria. 17 trials were included in the synthesis. Two of the reviewers have performed the search independently, and after applying

Study characteristics

The selected studies used samples with: lower back pain (6), neck pain (5), fibromyalgia (2), back pain non-specific (2) and chronic migraine (1). The control groups received one of the following: standard care, placebo (e.g. sham OMT, sham Manual therapy, OMT with sham ultrasound physical therapy), specific manipulation or exercises (e.g. sling Neurac exercise, non-thrust manipulation, sustain appophyseal natural glide), nonspecific exercises or a multimodal programme (consisting of CBT, education – ‘The Back book’ and exercise). Study characteristics including sample size and type of pain condition, type of intervention and control group, outcome measures employed and results were extracted and presented in *Appendix 1*.

Quality assessment

CASP (Critical Skills Appraisal Programme) for Randomized Controlled Trials was preferred for quality appraisal. This tool is widely used in health research, valid, user-friendly, accessible and appropriate to the topic of this review. CASP was designed to address the trials’ validity, results and the relevance to practice.^[47] The tool comprised eleven different questions and assessed criteria related to the internal and external validity of the trials (Did the trial address a clearly focused issue? Were patients, health workers and study personnel blinded; was the assignment of patients to treatments randomised?) but also evaluating the results (How large was the treatment effect?) and the applicability and relevance of the studies (Can the results be applied in your context or to the local population?).^[48] Scores

blinded). The 17 Rates have been ranked according to their total score (ranging from 14- 22) and divided into quartiles (Table).

The first quartile (lower quartile) contains the 25th percentile of the data-in this case the trial with the lowest score. The majority of the Rates in this review (eleven) fell into the second quartile. They all obtained a total score of 15 or 16 and were considered to have a medium quality. The third quartile, also called upper quartile (the 75th percentile of the data) was comprised of the four trials with the highest quality (scored 19, 20 or 22). The reviewers agreed that the trial in the lower quartile (considered to have a low quality due to insufficient randomization, selection bias and a high attrition rate) should be excluded from the final analysis.

Table 2. Quality assessment

Quartiles	CASP ratings	Trial name
First quartile (Lower quartile) Low quality	14	Hough et al. ⁷³
Second quartile (Median) Medium quality	15-16	Sung et al. ⁵⁵ Williams et al. ⁶¹ Voigt et al. ⁵⁸ van Dongen et al. ⁶⁰ UK BEAM trial ²³ Chown et al. ²⁶ Cleland et al. ⁵⁶ Castro-Sanchez et al. ⁵¹ Cheung-Lau et al. ⁵⁷ Gamber et al. ⁵³ Niemistö et al. ⁵⁹
Third quartile (Upper quartile) High quality	17-22	Bialowski et al. ⁵⁴ Licciardone et al. ⁵⁰ Lopez-Lopez et al. ⁵² Moustafa and Diab ⁴⁹

There were sixteen RCTs selected for full analysis. Psychological and generic health outcomes were extracted and are discussed below.

Depression and Anxiety

Five trials assessed effects on depression. Of these, two found significant differences in depression scores. Moustafa and Diab found significant differences between the experimental and control groups for BDI scores ($p < .0005$) at 1-year follow-up.^[49] Licciardone et al. reported a significant interaction between OMT and comorbid depression ($p = .02$) indicating that patients with comorbid depression did not respond favorably to OMT in their study.^[50] Three other reports found no significant effects of Osteopathy on depression (Castro-Sanchez et al, Lopez-Lopez et al. and Gamber et al.).^[51,52,53] Although the RCT conducted by Gamber and his colleagues did not report significant effects, the authors reported that the two OMT groups were less frequently depressed, had less frequent losses of energy were less often lonely.

In regards to anxiety, four studies reported effects. Bialowski et al. found that state anxiety was significantly associated with changes in pain sensitivity in participants who received spinal Manipulative Therapy ($r = .62, p = .04$). Similarly, Castro-Sanchez et al. reported that a 20-week massage-myofascial release program significantly improved anxiety but also quality of sleep and quality of life in patients with fibromyalgia. The experimental group experienced an improvement in regards to anxiety compared to baseline and also against placebo ($p < .041$). Lopez-Lopez et al. reported that only trait anxiety interacted with manual therapy while Moustafa and Diab revealed a statistically significant change favouring the experimental group in terms of all the outcome variables including anxiety ($F = 2560.6 p < .0005$)

Castro-Sanchez et al.	No sig. effect	Sig. increase in trait anxiety ($p < .041$) compared to baseline and placebo; Sig. improvement in trait anxiety ($p < .043$) at 1 month follow-up
Gamber et al.	No sig. main effect	
Lopez-Lopez et al.	No sig. effects	Treatment x time x anxiety interaction $F(2, 24) = 6.65, p < .005, \eta^2 = 0.36$
Moustafa and Diab	Sig. group \times time effect group BDI $F = 872.9 (p < .0005)$	Sig. group \times time effects BAI ($F = 2560.6 p < .0005$)
Licciardone et al.	OMT \times comorbid depression Interaction effects ($p = .02$)	
Bialowsky et al.		state anxiety ($r = .62, p = .04$) sig. associated with changes in A fiber-mediated pain sensitivity (SMT group)

Fear avoidance and pain catastrophizing

There were three studies reporting effects on fear avoidance. The UK Beam trial found that the manipulation package alone did not produce significant changes while manipulation followed by exercise produced significant improvements in fear avoidance beliefs both at three and twelve months. Equally, Sung et al. found a significant decrease in fear avoidance in the thoracic manipulation group (Group B).^[55] Cleland et al. reported that there were not any significant effects on fear avoidance.^[56] In what concerns pain catastrophizing,

temporal summation related to SMT were only minimally influenced by psychological factors.

Table 4. Trials reporting effects on fear avoidance and catastrophizing

Trial name	Fear avoidance
Cleland et al.	No differences in fear avoidance
UK BEAM trial	Manipulation followed by exercise at 3 & 12 months Mean=2.40 (1.41 to 3.39) p< .001; Mean= 1.24 (0.07 to 2.41) p< .5
Sung et al.	Sig. change in FABQ only in manipulation group (pre-test 73.6±7.3, post-test 87.9±4.2)
Trial name	Pain catastrophizing
Bialowsky et al.	Pain catastrophizing ($r = -.67, p = .02$) associated with changes in A fiber-mediated pain sensitivity in lower extremity in SMT participants

Health related quality of life and generic health status

There were seven studies reporting changes in health related quality of life. Cheung –Lau et al. found a significant improvement in the Physical component of the SF-36 for the Thoracic Manipulation group compared to control post-intervention and at 6 months follow-up (41.24, 8.40, $p = 0.002$).^[57] Similarly, Castro-Sanchez et al. reported significant improvements post-intervention in several dimensions of the SF-36: physical function ($p < 0.007$), physical role ($p < 0.039$), body pain ($p < .043$) and social function ($p < 0.48$) compared to baseline. Findings from the UK Beam trial also indicated significant improvements for the participants in the

improved disability at 12 months. Voigt et al. investigated the effects of OMT on pain and health related quality of life in patients with migraine and found significant improvements in the intervention group concerning the number of days lost due to migraine but also in physical role functioning, mental health, vitality and body pain. ^[58]

Improvements have been reported also in the ROMANS trial. At two months post-intervention, the osteopathic treatment group showed greater improvement than the usual care group on SF-12 mental score. After 6 months, the improvements remained significantly greater for the mental health score of the SF-12 for the Osteopathy group.

However, there were studies reporting similar outcomes in both the experimental and control groups. Niemistö et al. found that for patients with chronic lower back pain, both a manipulative treatment program with exercises and a physician's examination with information and advice enhanced health related quality of life and reduced healthcare utilization and costs. ^[59] Van Dogen et al. also reported that there were no significant differences between groups. ^[60] Despite that, the healthcare costs were found to be significantly lower in the manual therapy group compared to the physiotherapy group, the maximum probability of manual therapy being cost-effective was found to be low. Last but not least, Licciardone and his colleagues found medium effect sizes for OMT in improving general health, decreasing healthcare utilization and work disability in patients with lower back pain; however, none of these results were statistically significant.

In regards to quality of life, there were four trials reporting effects. Chown et al. found a significant increase in EQ-5D scores for all the groups (exercise, Physiotherapy and Osteopathy) at 6 weeks follow up. However, the authors suggested that attendance was

(spinal manipulation, exercise classes, or manipulation followed by exercise) increased patients' QALYs when compared to standard care alone. The authors suggested that adding spinal manipulation to 'best care' for back pain is cost-effective and that manipulation alone gives better value for money than the combined package (manipulation followed by exercise). Moreover, Williams et al. reached similar conclusions. The ROMANS trial showed significant improvements in EQ-5D scores of people with spinal pain both at 2 and 6 months. Williams and his colleagues suggested that a primary care osteopathic clinic yielded long-term psychological improvements at little additional cost. The only trial reporting no significant differences was conducted by van Dongen et al. The MTU and PT groups had similar results in what concerns functional status and QALYs.

Table 5. Trials reporting effects on quality of life and health status

Trial name	Quality of life and health status
Castro- Sanchez et al.	Sig. improvements post-intervention SF-36: physical function (p<0.007), physical role (p<0.039), body pain (p< .043) and social function (p<0.48) compared to baseline.
Cheung Lau et al.	Int. group – sig. greater improvement in the Physical Component (PCS) of the SF36 (41.24, 8.40, p = 0.002) immediately post-intervention and at 6 months follow-up.
Chown et al.	Increase in EQ-5D scores of 0.1 for all groups at 6 weeks follow- up (Osteopathy -0.11 (0.02 to 0.19), p< .5)
Niemistö et al.	Both Manipulative treatment and Consultation groups had a sig. improvement in HRQoL (p< .001, ANOVA). No differences at 12 months follow up (p= .93, ANOVA)
ROMANS trial Williams et al.	Osteopathic group – sig. improvement in SF-12 mental score (95% CI 2.7–10.7) at 2 months, 6 months- improvement in osteopathy group remained sig. >for SF-12 mental score (95% CI 1.0–9.9)
UK BEAM trial	Manipulation –sig. improvement of SF-36 physical score at both 3 and 12 months; Manipulation & exercise sig. effect on fear avoidance at 3 & 12 months Mean=2.40 (1.41 to 3.39) p< .001; Mean= 1.24 (0.07 to 2.41) p< .5
Van Dogen et al.	No sig. dif. between the MTU and PT group in functional status β = -1.03; 95 %CI: -2.55–0.48), and QALYs (β = -0.01; 95 %CI: -0.04–0.03)
Voigt et al.	4 /8 HRQoL domains of SF-36 in the OMT group showed sig. improvement (vitality, p< .01; mental health, p= .05; bodily pain, p= .05 and physical role functioning, p< .01)

DISCUSSION

This review aimed to determine whether Osteopathy has an impact on psychosocial factors in populations living with persistent pain. Studies considered within the review have revealed some effects of osteopathic treatment, particularly on anxiety and fear avoidance (patients undergoing osteopathic manipulation showed decreased anxiety and fear avoidance).

Additionally, several studies reported significant improvements in health status (six out of seven) and quality of life (three out of four). Despite that, more research needs to be done to further investigate these effects.

The current body of literature looking at the effects of Osteopathy on psychosocial factors associated chronic pain is limited. This review was one of the few to investigate whether osteopathic interventions affect psychosocial factors relevant in chronic pain.

The results of this review are similar to those obtained by Williams et al. who conducted the first systematic review of spinal manipulation to examine psychological outcomes.^[61] In this study, twelve studies reporting psychological outcomes were selected, six of which had a verbal comparator. The results showed a small benefit of spinal manipulation over verbal interventions (mean benefit of spinal manipulation equivalent to 0.34% of the population standard deviation [95% confidence interval (CI) 0.23—0.45] at 1—5 months; 0.27 of the SD [95% CI 0.14—0.40] at 6—12 months). They also reported a small benefit of spinal manipulation compared to physical treatment comparators (e.g. exercise programs).

psychological effects are due to the characteristics of treatment (reducing distressing symptoms as fear and pain). Our review found similar effects, for example one of the studies reported significant improvements in fear avoidance beliefs as a result of a treatment package consisting of manipulation and exercise (UK BEAM trial).

Significance and implications

First of all, it is essential to acknowledge that psychosocial factors play an important role in the development and maintenance of different chronic pain conditions.^[62, 63] More efforts are needed to establish the specific relevance and role of each of these factors in the aetiology and progression of different types of persistent pain. Furthermore, action needs to be taken to modify these factors with the help of psychological interventions. More research is needed in this area, particularly randomized controlled trials that report not only measures of pain and physical functioning but also psychosocial outcome measures.

Secondly, it is imperative to elucidate the underlying mechanisms through which osteopathic manipulation affects psychosocial factors of chronic pain. The dynamics of this process are still to be understood. The effects of Osteopathic treatment might be due to a reduction in fear followed by an improvement in pain beliefs. They might also be attributed to the collaborative nature of the patient-practitioner relationship or to the placebo effect. Further research needs to address this question and establish potential models of change. Process studies are needed to shed light on the effects of the individual components of Osteopathic care on patient outcomes.

Although Osteopathy itself is not a psychosocial intervention, it might be worth combining

increase in the effectiveness osteopathic care, and moderate the impact of comorbidities. This type of pairing might have a strong synergistic effect, compared to standard care alone. In fact there are recommendations to combine different types of treatment (physical, psychological, rehabilitative) in order to match patients' characteristics and individual needs. ^[64] It is already known that psychological process influence the experience of pain and also the treatment outcomes; therefore there is a chance that integrating psychological approaches into physical therapy could potentially enhance outcomes. ^[65] In addition, health economic evidence could be valuable in determining the cost-effectiveness of such combined packages.

In the future, osteopaths might benefit from a better awareness of the way in which their intervention influences patients' psychosocial outcomes. Different aspects of care such as the rapport with the patient, providing relevant information and encouraging self-management, showing empathy may all contribute to enhance patient outcomes. Osteopaths are ideally positioned to educate patients in regards to how certain factors as depression, anxiety or fear avoidance contribute to the onset and maintenance of persistent pain. Being aware of psychosocial factors might also signify a better understanding of the pain experience and the context in which chronic pain occurs. Additional training could be made available to provide Osteopaths with an extra set of skills and knowledge that will not only help their professional development but also enable them to support patients with chronic pain more effectively.

Osteopathy is a type of Complimentary therapy. The integration of Complementary and alternative medicine (CAM) and holistic modalities with conventional healthcare has the potential to yield significant health improvements. Osteopathy is increasingly provided in primary care settings; however more research is needed to explore the potential benefits and

make research in this domain a priority. Including and reporting this type of evidence is needed in order to inform and facilitate evidence-based decision making among policy makers but also health practitioners and patients. ^[66]

Limitations

It is important to acknowledge some limitations of this review. First of all, the samples investigated in the selected studies were heterogeneous (patients with different chronic pain conditions such as lower back pain, neck pain, fibromyalgia etc.). Pain is a very complex and subjective experience and there are marked differences in regards to causes and contributing from time to time and then subside, only to come back again subsequently. ^[67] For example, in fibromyalgia, the pain is widespread and flares are associated with prolonged activity, soft tissue injuries, poor sleep, and exposure to cold and psychological stressors) ^[68] Patients with chronic migraine experience headache episodes daily or near daily; there is also a tendency for these episodes to increase in frequency over time. ^[69] As a result, the findings of this review cannot be generalizable across specific types of persistent pain. However, this review is insightful because it emphasizes some particular effects that could potentially be valid across different persistent pain conditions.

In addition, there were a variety of manipulation techniques delivered by different health practitioners. There is often an overlap of techniques with other practitioners like Chiropractors or Physiotherapists, who use manipulative techniques similar to those of Osteopaths. The main difference between Osteopaths and Chiropractors consists in that while Chiropractors tend to focus mainly on the alignment of the spine as the means to relieve pain, Osteopaths look at the body as whole and consider the overall structure. Despite the

Moreover, it is important to mention that the majority of the trials analysed in this review were not blinded (seven out of seventeen). The remaining RCTs were either single-blinded (five) or double-blinded (two). While blinding or 'masking' is the cornerstone of treatment evaluation, it is difficult to obtain in trials assessing non-pharmacological interventions^[71] It is very challenging to blind the participants and the treatment provider, it is feasible to blind the researchers involved in data collection and analysis to group allocation or baseline assessments.

Another common limitation in trials of this type consists in high drop out rates. It is known that high attrition may produce bias. The results might not be due to the effects of the intervention but to a loss of participants who were unresponsive or more or less symptomatic than the others.^[72] It is also possible that some participants might fear adverse events or have concerns regarding being assigned to a placebo group. One of the trials initially selected for this review was excluded from the final analysis due to high attrition (23.5%) and insufficient randomization. Hough et al. reported that younger, unemployed people with lower back pain who had higher psychosocial risk scores tended to 'drop out' of treatment.^[73] They also indicated that there might have been potential selection bias.

Other possible sources of bias of the analyzed trials include: long-term follow-up periods, selection bias (differences in baseline characteristics) and the possibility that the therapist was also the principal investigator (which might have resulted in more favorable responses).

Despite this, all of the sixteen analyzed RCTs had sound randomization (computer generated, block randomization, precoded cards). Furthermore, the majority of the trials obtained a

analysis and compared their conclusions, reaching an agreement in regards to the selection of trials and the quality appraisal. A third author validated the results.

Conclusions

The findings of this review are encouraging, suggesting that osteopathic treatment may have some effects on psychological factors such as anxiety and fear avoidance but also on the health status and overall quality of life of people living with persistent pain. Further research is needed to further investigate these effects and to evaluate the effectiveness of integrating psychological principles and interventions into Osteopathic practice. Only then will a fuller understanding of the role of Osteopathy in chronic pain management be achieved.

REFERENCES

- [1] Lima, D., Alves, V., & Turato, E. (2014). The phenomenological-existential comprehension of chronic pain: going beyond the standing healthcare models. *Philosophy, Ethics, And Humanities In Medicine*, 9(1), 2. <http://dx.doi.org/10.1186/1747-5341-9-2>
- [2] Craig, K. D. (1994). Emotional aspects of pain. In P. D. Wall & R. Melzack (Eds.), *Textbook of pain* (3rd ed.) (pp. 261–274). Edinburgh: Churchill Livingstone.
- [3] Michaëlis, C., Kristiansen, M., & Norredam, M. (2015). Quality of life and coping strategies among immigrant women living with pain in Denmark: a qualitative study. *British Medical Journal Open*, 5(7), e008075. <http://dx.doi.org/10.1136/bmjopen-2015-008075>
- [4] Currie, S. & Wang, J. (2004). Chronic back pain and major depression in the general Canadian population. *Pain*, 107(1), 54-60. <http://dx.doi.org/10.1016/j.pain.2003.09.015>
- [5] Banks, S. & Kerns, R. (1996). Explaining high rates of depression in chronic pain: A diathesis-stress framework. *Psychological Bulletin*, 119(1), 95-110. <http://dx.doi.org/10.1037/0033-2909.119.1.95>
- [6] Rayner, L., Hotopf, M., Petkova, H., Matcham, F., Simpson, A., & McCracken, L. (2016). Depression in patients with chronic pain attending a specialised pain treatment centre. *Pain*, 157(7), 1472-1479. <http://dx.doi.org/10.1097/j.pain.0000000000000542>
- [7] Sigtermans, M., van Hilten, J., Bauer, M., Arbous, S., Marinus, J., Sarton, E., & Dahan, A. (2009). Ketamine produces effective and long-term pain relief in patients with Complex Regional Pain Syndrome Type 1. *Pain*, 145(3), 304-311. <http://dx.doi.org/10.1016/j.pain.2009.06.023>
- [8] Kress, H., Aldington, D., Alon, E., Coaccioli, S., Collett, B., & Coluzzi, F. et al. (2015). A holistic approach to chronic pain management that involves all stakeholders: change is needed. *Current Medical Research And Opinion*, 31(9), 1743- 1754. <http://dx.doi.org/10.1185/03007995.2015.1072088>
- [9] Bennett, S. (2012). Medicine's paradigm shift: An opportunity for psychology. *Apa.org*. Retrieved 13 September 2016, from <http://www.apa.org/monitor/2012/09/pc.aspx>
- [10] Bendelow, G. (2013). Chronic Pain Patients and the Biomedical Model of Pain. *Virtual Mentor*,

[12] Ahn, A., Tewari, M., Poon, C., & Phillips, R. (2006). The Limits of Reductionism in Medicine: Could Systems Biology Offer an Alternative? *Plos Med*, 3(6), e208.

<http://dx.doi.org/10.1371/journal.pmed.0030208>

[13] Federoff, H. & Gostin, L. (2009). Evolving From Reductionism to Holism. *JAMA*, 302(9), 994.

<http://dx.doi.org/10.1001/jama.2009.1264>

[14] Freeman, J. (2005). Towards a definition of holism. *The British Journal of General Practice*, 55(511), 154-155.

[15] Bendelow, G. (2009). *Health, emotion, and the body*. Cambridge, UK: Polity. [17] Engel, G. (1977). The need for a new medical model: a challenge for biomedicine. *Science*, 196(4286), 129-136. <http://dx.doi.org/10.1126/science.847460>

[16] Turk, D. C., & Monarch, E. S. (2002). Biopsychosocial perspective on chronic pain. In D. C. Turk & R. J. Gatchel (Ed.), *Psychological approaches to pain management: A practitioner's handbook* (2nd ed., pp. 3–30). New York: Guilford Press

[17] Anchin, J. (2015). Unifying Nonlinear Dynamical Biopsychosocial Systems Approach. *The SAGE Encyclopaedia of Theory in Counselling and Psychotherapy*.

<http://dx.doi.org/10.4135/9781483346502.n365>

[18] European Committee for standardization (2017). *New European Standard for Osteopathy Services*. [online] Available at: <https://www.cen.eu/news/brief-news/Pages/News-2016-008.aspx> [Accessed 28 Sep. 2016].

[19] Paulus, S. (2013). The core principles of osteopathic philosophy. *International Journal Of Osteopathic Medicine*, 16(1), 11-16 <http://dx.doi.org/10.1016/j.ijosm.2012.08.003>

[20] Benchmarks for training in traditional /complementary and alternative medicine: benchmarks for training in osteopathy. (2010). 1st ed. [ebook] World Health Organization. [Accessed 21 Jan. 2017].

Available at:

<http://www.who.int/medicines/areas/traditional/BenchmarksforTraininginOsteopathy.pdf>

[21] *Public and patient perceptions*. (2015). *Osteopathy.org.uk*. Retrieved 16 September 2016, from <http://www.osteopathy.org.uk/news-and-resources/research-surveys/gosc-research/public-and-patient->

[23] United Kingdom back pain exercise and manipulation (UK BEAM) randomised trial: effectiveness of physical treatments for back pain in primary care. (2004). *British Medical Journal*, 329(7479), 1377-0. <http://dx.doi.org/10.1136/bmj.38282.669225.ae>

[24] Williams, N. H. (2003). Randomized osteopathic manipulation study (ROMANS): Pragmatic trial for spinal pain in primary care. *Family Practice*, 20(6), 662–669. doi: 10.1093/fampra/cm607

[25] Williams, N. (2004). Cost-utility analysis of Osteopathy in primary care: results from a pragmatic randomized controlled trial. *Family Practice*, 21(6), 643-650. <http://dx.doi.org/10.1093/fampra/cm612>

[26] Chown, M., Whittamore, L., Rush, M., Allan, S., Stott, D., & Archer, M. (2008). A prospective study of patients with chronic back pain randomised to group exercise, physiotherapy or Osteopathy. *Physiotherapy*, 94(1), 21-28. <http://dx.doi.org/10.1016/j.physio.2007.04.014>

[27] Orrock, P. (2016). The patient experience of osteopathic healthcare. *Manual Therapy*, 22, 131-137. <http://dx.doi.org/10.1016/j.math.2015.11.003>

[28] Steel, A., Sundberg, T., Reid, R., Ward, L., Bishop, F., & Leach, M. et al. (2017). Osteopathic manipulative treatment: A systematic review and critical appraisal of comparative effectiveness and health economics research. *Musculoskeletal Science And Practice*, 27, 165-175. <http://dx.doi.org/10.1016/j.math.2016.10.067>

[29] Bevan Commission | Prudent Healthcare. (2013). [Bevancommission.org](http://www.bevancommission.org). Retrieved 15 September 2016, from <http://www.bevancommission.org/prudent-healthcare>

[30] Gold MR, Siegel JE, Russell LB, Weinstein MC (2003). *Cost-effectiveness in health and medicine*. New York: Oxford University Press.

[31] Burton, A., McClune, T., Clarke, R., & Main, C. (2004). Long-term follow-up of patients with low back pain attending for manipulative care: outcomes and predictors. *Manual Therapy*, 9(1), 30-35. [http://dx.doi.org/10.1016/s1356-689x\(03\)00052-3](http://dx.doi.org/10.1016/s1356-689x(03)00052-3)

[32] Pincus, T., Vogel, S., Burton, A., Santos, R., & Field, A. (2006). Fear avoidance and prognosis in back pain: A systematic review and synthesis of current evidence. *Arthritis & Rheumatology*, 54(12),

disability. *Pain*, 52(2), 157-168. [http://dx.doi.org/10.1016/0304-3959\(93\)90127-b](http://dx.doi.org/10.1016/0304-3959(93)90127-b)

[34] Quartana, P., Campbell, C., & Edwards, R. (2009). Pain catastrophizing: a critical review. *Expert Review Of Neurotherapeutics*, 9(5), 745-758. <http://dx.doi.org/10.1586/ern.09.34>

[35] Sullivan, M., Thorn, B., Haythornthwaite, J., Keefe, F., Martin, M., Bradley, L., & Lefebvre, J. (2001). Theoretical Perspectives on the Relation Between Catastrophizing and Pain. *The Clinical Journal Of Pain*, 17(1), 52-64. <http://dx.doi.org/10.1097/00002508-200103000-00008>

[36] Edwards, R., Bingham, C., Bathon, J., & Haythornthwaite, J. (2006). Catastrophizing and pain in arthritis, fibromyalgia, and other rheumatic diseases. *Arthritis Rheum*, 55(2), 325-332. <http://dx.doi.org/10.1002/art.21865>

[37] Von Korff M, Deyo RA, Cherkin DC, Barlow W. (1993) Back pain in primary care: outcomes at 1 year. *Spine*, 18:855-62.

[38] Linton SJ, Buer N, Vlaeyen JWS, Hellsing A-L. Are fear-avoidance beliefs related to the inception of an episode of back pain? A prospective study. *Psychological Health* 1999 (in press).

[39] Pincus, T., Burton, A., Vogel, S., & Field, A. (2002). A Systematic Review of Psychological Factors as Predictors of Chronicity/Disability in Prospective Cohorts of Low Back Pain. *Spine*, 27(5), E109-E120. <http://dx.doi.org/10.1097/00007632-200203010-00017>

[40] Hasenbring M, Hallner D, Klasen B (2001). Psychologische Mechanismen im Prozess der Schmerzchronifizierung. *Schmerz.*, 6(442-447).

[41] Hayes, S. C., Strosahl, K., & Wilson, K. G. (1999). *Acceptance and Commitment Therapy: An experiential approach to behavior change*. New York: Guilford Press

[42] McCracken, L., Vowles, K., & Eccleston, C. (2004). Acceptance of chronic pain: component analysis and a revised assessment method. *Pain*, 107(1), 159-166. <http://dx.doi.org/10.1016/j.pain.2003>

[43] McCracken, L. & Eccleston, C. (2003). Coping or acceptance: what to do about chronic pain? *Pain*, 105(1), 197-204. [http://dx.doi.org/10.1016/s0304-3959\(03\)00202-1](http://dx.doi.org/10.1016/s0304-3959(03)00202-1)

[44] Carnes, D., Mars, T., Plunket, A., Abbey, H., & Nanke, L. (2017). A mixed methods evaluation

- [46] Pincus, T., Burton, A., Vogel, S., & Field, A. (2002). A Systematic Review of Psychological Factors as Predictors of Chronicity/Disability in Prospective Cohorts of Low Back Pain. *Spine*, 27(5), E109-E120. <http://dx.doi.org/10.1097/00007632-200203010-00017>
- [47] National Collaborating Centre for Methods and Tools (2011). *Critical appraisal tools to make sense of evidence*. Hamilton, ON: McMaster University. (Updated 16 December, 2011) Retrieved from <http://www.nccmt.ca/resources/search/87>.
- [48] *Critical Appraisal Skills Programme (CASP)*. Retrieved 11 April 2017, from <http://www.casp-uk.net/appraising-the-evidence>
- [49] Moustafa, I. M., & Diab, A. A. (2015). The addition of upper cervical manipulative therapy in the treatment of patients with fibromyalgia: A randomized controlled trial. *Rheumatology International*, 35(7), 1163–1174. [doi:10.1007/s00296-015-3248-7](https://doi.org/10.1007/s00296-015-3248-7)
- [50] Licciardone, J. C., Kearns, C. M., & Minotti, D. E. (2015). Outcomes of osteopathic manual treatment for chronic low back pain according to baseline pain severity: Results from the OSTEOPATHIC trial. *Manual Therapy*, 18(6), 533–540. [doi:10.1016/j.math.2013.05.006](https://doi.org/10.1016/j.math.2013.05.006)
- [51] Castro-Sánchez, A. M., Matarán-Peñarrocha, G. A., Granero-Molina, J., Aguilera-Manrique, G., Quesada-Rubio, J. M., & Moreno-Lorenzo, C. (2011). Benefits of Massage- Myofascial release therapy on pain, anxiety, quality of sleep, depression, and quality of life in patients with Fibromyalgia. *Evidence-Based Complementary and Alternative Medicine*, 2011, 1–9. [doi:10.1155/2011/561753](https://doi.org/10.1155/2011/561753)
- [52] Lopez-Lopez, A., Alonso Perez, J., González Gutierrez, J., La Touche, R., Lerma Lara, S., Izquierdo, H., & Hernández-Carnero, J. (2015). Mobilization versus manipulations versus sustain apophyseal natural glide techniques and interaction with psychological factors for patients with chronic neck pain: randomized controlled trial. *European Journal of Physical and Rehabilitation Medicine*, 51(121), 32.
- [53] Gamber, R. G., Shores, J. H., Russo, D. P., Jimenez, C., & Rubin, B. (2002). Osteopathic manipulative treatment in conjunction with medication relieves pain associated with fibromyalgia syndrome results of a randomized clinical pilot project: OSTMED-DR. Retrieved September 4, 2016, from <http://ostemeddr.contentdm.oclc.org/cdm/ref/collection/myfirst/id/10657>

- [55] Sung, Y., Lee, J., & Park, Y. (2014). Effects of Thoracic Mobilization and Manipulation on Function and Mental State in Chronic Lower Back Pain. *Journal Of Physical Therapy Science*, 26(11), 1711-1714. <http://dx.doi.org/10.1589/jpts.26.1711>
- [56] Cleland, J. A., Glynn, P., Whitman, J. M., Eberhart, S. L., MacDonald, C., & Childs, J. D. (2007). Short-term effects of thrust versus Nonthrust mobilization/manipulation directed at the Thoracic spine in patients with neck pain: A Randomized clinical trial. *Physical Therapy*, 87(4), 431–440.
- [57] Cheung Lau, H. M. C., Wing Chiu, T. T., & Lam, T.-H. (2011). The effectiveness of thoracic manipulation on patients with chronic mechanical neck pain – A randomized controlled trial. *Manual Therapy*, 16(2), 141–147. [doi:10.1016/j.math.2010.08.003](https://doi.org/10.1016/j.math.2010.08.003)
- [58] Voigt, K., Liebnitzky, J., Burmeister, U., Sihvonen-Riemenschneider, H., Beck, M., Voigt, R., & Bergmann, A. (2011). Efficacy of Osteopathic manipulative treatment of female patients with migraine: Results of a Randomized controlled trial. *The Journal of Alternative and Complementary Medicine*, 17(3), 225–230. [doi:10.1089/acm.2009.0673](https://doi.org/10.1089/acm.2009.0673)
- [59] Niemistö, L., Lahtinen-Suopanki, T., Rissanen, P., Lindgren, K.-A., Sarna, S., & Hurri, H. (2003). A Randomized trial of combined manipulation, stabilizing exercises, and physician consultation compared to physician consultation alone for chronic low back pain. *Spine*, 28(19), 2185–2191. [doi:10.1097/01.brs.0000085096.62603.61](https://doi.org/10.1097/01.brs.0000085096.62603.61)
- [60] Van Dongen, J. M., Groeneweg, R., Rubinstein, S. M., Bosmans, J. E., Oostendorp, R. A. B., Ostelo, R. W. J. G., & van Tulder, M. W. (2016). Cost-effectiveness of manual therapy versus physiotherapy in patients with sub-acute and chronic neck pain: A randomised controlled trial. *European Spine Journal*, 25(7), 2087–2096. [doi:10.1007/s00586-016-4526-0](https://doi.org/10.1007/s00586-016-4526-0)
- [61] Williams, N., Hendry, M., Lewis, R., Russell, I., Westmoreland, A., & Wilkinson, C. (2007). Psychological response in spinal manipulation (PRISM): A systematic review of psychological outcomes in randomised controlled trials. *Complementary Therapies in Medicine*, 15(4), 271-283. <http://dx.doi.org/10.1016/j.ctim.2007.01.0>
- [62] Jacobs, M. (2013). Psychological Factors Influencing Chronic Pain and the Impact of Litigation. *Current Physical Medicine And Rehabilitation Reports*, 1(2), 135-141. Retrieved from <http://www.californiapainmedicinecenter.com/wp->

rheumatology pain clinic. *Rheumatology*, 47, 1803–1808.

<http://dx.doi.org/doi:10.1093/rheumatology/ken377>

[64] Turk, D., Wilson, H., & Cahana, A. (2011). Treatment of chronic non-cancer pain. *Lancet*, 77(9784), 2226-35. [http://dx.doi.org/doi:10.1016/S0140-6736\(11\)60402-9](http://dx.doi.org/doi:10.1016/S0140-6736(11)60402-9).

[65] Linton, S., & Shaw, W. (2011). Impact of Psychological Factors in the Experience of Pain. *Physical Therapy*, 91(5), 700-711. <http://dx.doi.org/10.2522/ptj.20100330>

[66] Phillips, C. (2006). Economic burden of chronic pain. *Expert Review Of Pharmacoeconomics & Outcomes Research*, 6(5), 591-601. <http://dx.doi.org/10.1586/14737167.6.5.591>

[67] Coghill, R. (2010). Individual Differences in the Subjective Experience of Pain: New Insights Into Mechanisms and Models. *Headache: The Journal Of Head And Face Pain*, 50(9), 1531-1535. <http://dx.doi.org/10.1111/j.1526-4610.2010.01763.x>

[68] Coghill, R. & Eisenach, J. (2003). Individual Differences in Pain Sensitivity: Implications for Treatment Decisions. *Anesthesiology*, 98(6), 1312-1314. <http://dx.doi.org/10.1097/00000542-200306000-00003>

[69] Häuser, W. & Kopp, I. (2013). OP0070 Update of the German evidence-based guideline on the management of fibromyalgia syndrome. *Annals Of The Rheumatic Diseases*, 71(Suppl 3), 77.1-77. <http://dx.doi.org/10.1136/annrheumdis-2012-eular.1753>

[70] Carnes, D., & Fawkes, C. *What is the difference between osteopaths, chiropractors, and physiotherapists?* Retrieved 9 April 2017, from <http://www.ncor.org.uk/wp-content/uploads/2013/05/Differences-between-osteopathy-chiropractic-and-physiotherapy.pdf>

[71] Boutron, Guittet, L., Estellat, C., Ravaud, P., Moher, D., & Hróbjartsson, A. (2007). Reporting Methods of Blinding in Randomized Trials Assessing Nonpharmacological Treatments, *Plos*. Retrieved from <https://doi.org/10.1371/journal.pmed.0040061>

[72] Zweben, A., Fucito, L., & O'Malley, S. (2013). Effective Strategies for Maintaining Research Participation in Clinical Trials. *Drug Inf. Journal*, 43(4), 10.1. <http://dx.doi.org/doi:10.1177/009286150904300411>

[73] Hough, E., Stephenson, R., & Swift, L. (2007). A comparison of manual therapy and active

ACCEPTED MANUSCRIPT

Author	Type of pain	Intervention	Duration	Control group	Outcome measures
Bialowski et al., 2009	LBP (N=36) average age=32.3	Spinal manipulative therapy (SMT)	4 manipulations 5min; QST protocol (thermal pain sensitivity)	Nonspecific activity (Stationary bicycle) Specific activity (Lumbar extension exercise)	Fear of Pain Questionnaire (FPQ-III); The Tampa Scale Kinesiophobia (TSK) Coping Strategies Questionnaire (CSQ-R); State-Trait Anxiety Inventory (STAI); Anxiety Sensitivity Index (ASI)
Castro-Sanchez et al., 2011	Fibromyalgia (N=74)	Massage-myofascial Release therapy	90 min session/ Week for 20 weeks	Placebo (sham treatment)	State-Trait Anxiety Inventory (STAI); Beck Depression Inventory (BDI); SF-36
Cheung Lau et al., 2010	Neck pain (N=120, 18-55)	Thoracic manipulation (TM) Infrared radiation therapy (IRR) and educational material	8 sessions (twice / week)	Infrared radiation therapy (IRR) and educational material only	SF-36
Chown et al., 2008	LBP (N=239, 18-65)	Manipulative physiotherapy Osteopathy	5 treatment sessions (30 min. each)	Group exercise with physiotherapist	EQ-5D
Cleland et al., 2007	Neck pain (N=60, age 18- 60)	Thoracic spine thrust mobilization/manipulation	Single session	Nonthrust mobilization/ manipulation	Fear-Avoidance Beliefs Questionnaire (FABQ)
Gamber et al., 2002	Fibromyalgia (N=24)	G1-Osteopathic Manipulation in addition to current medication; G2-Osteopathic Manipulation, Teaching group & current medication	23 weeks	Current medication alone	Centre for Epidemiological Studies Depression Scale Depression

Hough et al., 2007	Non-specific low back pain (N=39)	Manual therapy	8 treatments over 4 weeks	Active rehabilitation (progressive exercise and education programme)	Linton & Hallden Questionnaire (Psychosocial factors linked to development of chronic non-specific low back pain)
Licciardone et al., 2015	LBP (N=455)	Osteopathic Manipulative treatment (OMT) Ultrasound physical therapy (UPT)	One hour /week 12 weeks	OMT with sham UPT UPT with sham OMT Sham OMT with sham UPT	SF-36
Lopez-Lopez et al., 2015	Neck pain (N=48)	HVLA (high velocity and low amplitude manipulation) Posteroanterior mobilization	Single session	Sustain appophyseal natural glide (SANG)	State Trait Anxiety Inventory (STAI); Beck Depression Inventory (BDI –II) Spanish version; Tampa Scale for Kinesiophobia; Pain Catastrophizing Scale (PCS)
Moustafa & Diab, 2015	Fibromyalgia (N=120)	Multimodal program (education, exercise & CBT) and upper cervical manipulative Therapy	12-week program plus 12 sessions of cervical manipulative therapy (3/week)	Multimodal program alone	Beck Anxiety Inventory (BAI) Beck Depression Inventory (BDI) Pain Catastrophizing Scale (PCS)
Niemistö et al., 2003	LBP (N=204)	Manipulative Treatment with stabilizing Exercises	60-minute evaluation, treatment, 4 exercise sessions and education Booklet	Physician's Consultation and educational booklet	Health-related quality of life (15D)
UK BEAM trial, 2004	Back pain (N= 1334)	G1-Spinal manipulation; (Techniques representative of UK chiropractic, osteopathic & physiotherapy) G2-Spinal Manipulation and exercise	8 x 60 minute sessions over 4-8 weeks & "refresher" class in week 12	G3-Best care in General Practice and "The Back Book"	Fear avoidance beliefs Questionnaire (FABQ) SF-36 (health status) EuroQol (EQ-5D)

Van Dongen et al., 2015	Ns neck pain (N=180)	Manual therapy	6 sessions (30-60 min each)	Physical therapy (standard care, active exercise)	SF-36 EQ-5D
Voigt et al., 2011	Migraine (N=42, all female)	Osteopathic manipulative treatments (OMT)	5 x50-minute osteopathic manipulative treatments	No OMT/sham/physical therapy Only filled in questionnaires	SF-36
Williams et al., 2013 (ROMANS)	Neck or back pain (N=201)	GP care and 3 Osteopathic Manipulation sessions	3 or 4 sessions Every week x 1-2 weeks.	GP care alone	SF-12 health status EuroQol (EQ-5D)
Youn-Bum Sung et al., 2014	LBP (N=36)	Mobilization (trunk mobilization after sling Neurac exercise) Manipulation (trunk Manipulation after sling Neurac exercise)	Single Session	Control group (Sling Neurac exercise)	Fear-avoidance beliefs questionnaire (FABQ)

RANDOMISED CONTROLLED TRIAL

(A) Are the results of the review valid?																			(B) What are the results?			
NAME	Question 1		Question 2		IS WORTH TO CONTINUING?	Question 3		Question 4		Question 5		Question 6		Question 7		Question 8		Can't tell your				
	Did the trial address a clearly focused issue?		Was the assignment of patients to treatments randomised?			Were patients, health workers and study personnel blinded?		Were the groups similar at the start of the trial?		Aside from the experimental intervention, were the groups		Were all of the patients who entered the trial properly accounted for at its		How large was the treatment effect?		How precise was the estimate of the treatment effect?						
	Score	Description	Score	Description		Score	Description	Score	Description	Score	Description	Score	Description	Score	Description	Score	Description		Score			
1 Bialowski et al., 2009	2	YES	2	YES- computer generated	YES	0	NO	2	YES	2	YES	2	YES	1	small to medium effect size	2	p< .5, 95% CI	2				
2 Castro- Sanchez et al., 2011	2	YES	2	YES	YES	1	Partially- only the pla	2	YES	2	YES	2	YES	0	no effect sizes rep	0		1				
3 Cheung Lau et al., 2011	2	YES	2	YES- computer generated	YES	1	Single -blinded	2	YES	2	YES	2	YES	0	no effect sizes rep	0		1				
4 Chown et al., 2008	2	YES	2	YES-block randomization	YES	1	Single-blinded	2	YES	2	YES	1	2	0	no effect sizes rep	0		1				
5 Cieland et al., 2007	2	YES	2	YES-computer generated	YES	0	NO	2	YES	2	YES	2	YES	0	no significant diff	0		1				
6 Gamber et al., 2002	2	YES	2	YES-precoded cards	YES	1	Single-blinded (obse	2	YES	2	YES	2	YES	0	no significant effe	0		1				
7 Hough et al., 2007	2	YES	1	Insufficient randomizati	YES	1	Single-blinded	2	YES	2	YES	1	high attrition	0	no significant effe	0		1				
8 Licciardone et al., 2015	2	YES	2	YES-computer generated	YES	2	Double-blinded	2	YES	2	YES	2	YES	2	large treatment e	2	p< .5, 95% CI	2				
9 Lopez-Lopez et al., 2015	2	YES	2	YES-computer generated	YES	2	Double blinded	2	YES	2	YES	2	YES	2	large effect size	2	P< .5, 95% CI	2				
10 Moustafa and Diab, 2015	2	YES	2	YES-balanced stratified assignment	YES	1	Single-blinded	2	YES	2	YES	2	YES	2	large effect sizes	2	p< .5, 95% CI	1				
11 Niemistö et al., 2003	2	YES	2	YES	YES	1	Partial (blinded clinic	2	YES	2	YES	2	YES	0	No effect sizes.	0		1				
12 UK BEAM Trial, 2004	2	YES	2	YES-block randomization	YES	0	NO	2	YES	2	YES	2	YES	0	no effect sizes rep	0		1				
13 van Dongen et al., 2015	2	YES	2	YES-computer generated	YES	0	NO	2	YES	2	YES	2	YES	0	no differences	0		1				
14 Voigt et al., 2009	2	YES	2	YES	YES	0	NO	2	YES	2	YES	2	YES	0	no effect size reported	0		1				
15 Williams et al.,2003	2	YES	2	YES	YES	0	NO	2	YES	2	YES	2	YES	0	no effect sizes rep	0		1				
16 Youn-Bum Sung et al.,2014	2	YES	2	YES	YES	0	NO	2	YES	2	YES	2	YES	0	no effect sizes reported	0		1				
	0	no/can't tell	0	no randomization	0	0	no blinding	0	no	0	0	0	no	0	no effect size rep	0	can't tell	0				
	1	partially	1	partial/ insufficient randomization	1	1	single-blinded	1	to some extent	1	1	1	to some exten	1	small to medium	1		1				
	2	yes	2	randomized	2	2	Double-blinded	2	yes	2	2	2	yes	2	moderate to large	2	p<.5, 95% CI	2				